

✓
✓
✓
COMPUTED
RECORDED
COMPARED

FILED NO: **1417**
BOOK 1 PAGE 551
97 OCT -7 PM 1:34
MICHELLE UTSLER
RECORDER
MADISON COUNTY, IOWA

REC \$ 5.00
AUD \$
R.M.F. \$ 1.00

Prepared By: J. Brian Morrissey, Morrissey Surveying, 1926 Pammel Park Road, Winterset, Ia. 50273, Tel. (515) 462-2166

UNITED STATES PUBLIC LAND SURVEY CORNER CERTIFICATE OF

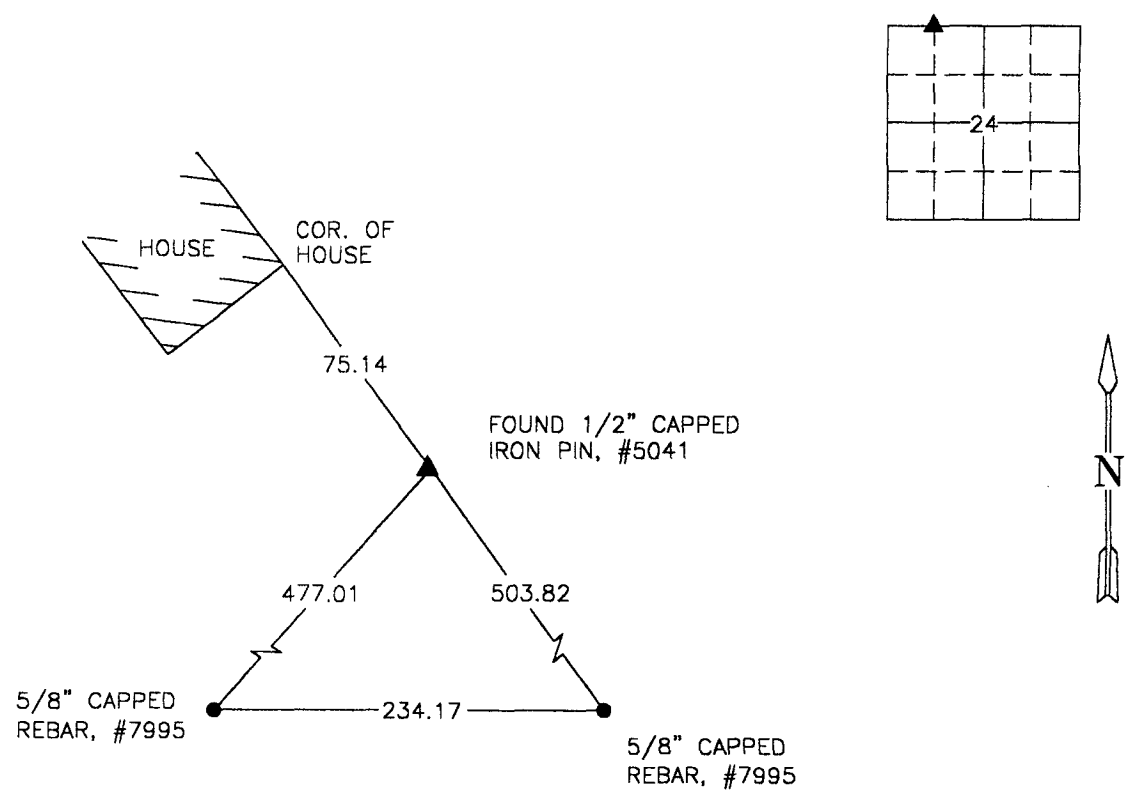
Land Survey Monuments situated in Section 24, Township 75 N, Range 26 W, of the Fifth Principal Meridian, Madison County, Iowa.
Previously recorded in BOOK 1, PAGE 187 in County Records Office.
(book, page, document number, etc.)

(Show reason for preparing this certificate, the evidence and detailed procedures used in establishing the corner positions and monumentation found or placed.)

Monument Description and Remarks: Found 1/2" capped iron pin, #5041, all of previously recorded ties gone.
Accepted position.

PLAN VIEW

(Show a minimum of three reference ties to durable physical objects, relevant monuments and physical conditions that will enable recovery of the corner.)



NE. COR., NW. 1/4, NW. 1/4, SEC. 24



I hereby certify that the survey work was completed and this certificate was prepared by me or under my direct personal supervision and that I am a duly Licensed Land Surveyor under the laws of the State of Iowa.

Signature: J. Brian Morrissey Date: 10/3/97
J. Brian Morrissey

License number 7995.
My license renewal date is December 31, 1997.