

COUNTED
 RECORDED
 COMPARED

FILED NO. 1148
 BOOK 1 PAGE 545

RECS 5.00
 AUDS _____
 R.M.F. \$ 1.00

97 SEP 17 PM 1:06
 MICHELLE UTSLER
 RECORDER
 MADISON COUNTY, IOWA

VANCE & HOCHSTETLER, P.C. CONSULTING ENGINEERS, WINTERSSET, IOWA (515) 462-399

CHARLES T. VANCE, 110 West Green St., Winterset, Iowa 50273
 JAMES M. HOCHSTETLER, 110 West Green St., Winterset, Iowa 50273

SLSI 9-94

UNITED STATES PUBLIC LAND SURVEY CORNER CERTIFICATE

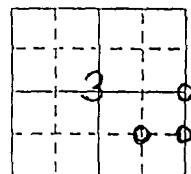
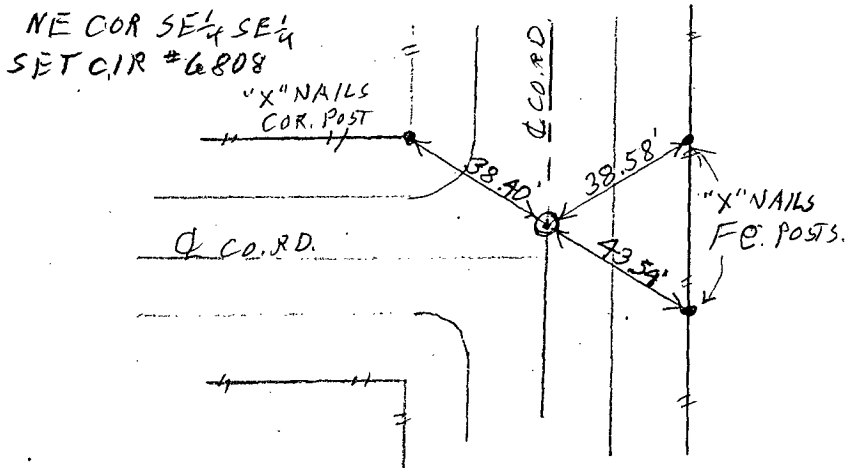
OF
 Land Survey Monuments situated in Section 3, Township 76N., Range 28W, of the Fifth Principal Meridian, MADISON County, Iowa.
 Previously recorded in _____ in County Recorder's Office.

(book, page, document number, etc.)
 (Show reason for preparing this certificate, the evidence and detailed procedures used in establishing the corner positions and monumentation found or placed.)

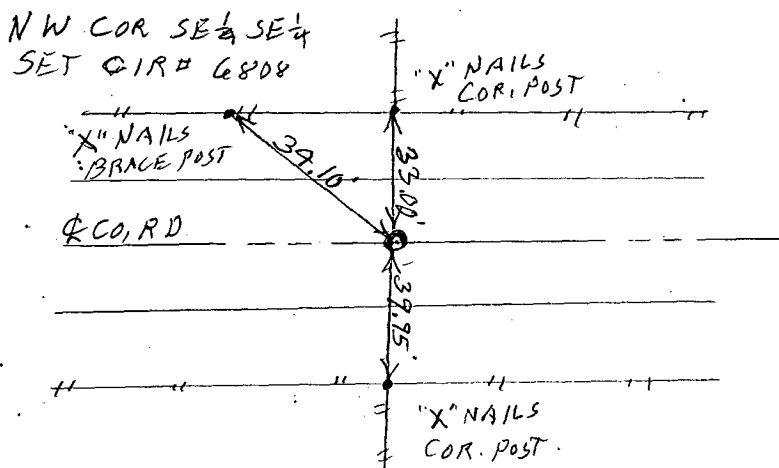
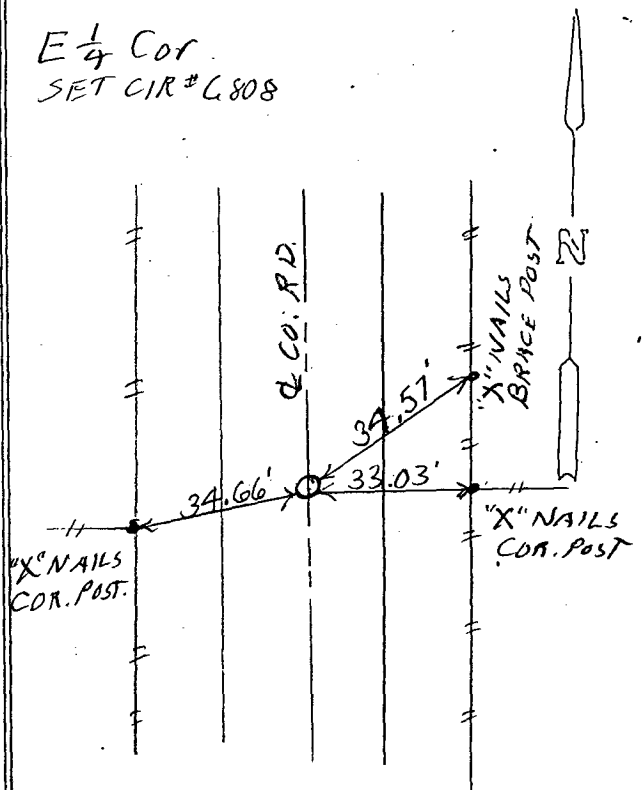
Monument Description and Remarks: NE COR SE $\frac{1}{4}$ SE $\frac{1}{4}$ - SET CIR # 6808 at midpoint on line between found SE COR. & set E $\frac{1}{4}$ Cor.
NW COR SE $\frac{1}{4}$ SE $\frac{1}{4}$ - Set CIR # 6808 on County Road ROW split in line with property line fences N. & S.
E $\frac{1}{4}$ COR. - Set CIR # 6808 - Old ties in Co. Engr. Stone Records Book show stone found in 1922 with ties to house & corn crib. Could not find stone but ties sit @ road and property line fence to East.

PLAN - VIEW

(Show a minimum of three reference ties to durable physical objects, relevant monuments and physical conditions that will enable recovery of the corner.)



E $\frac{1}{4}$ Cor.
 SET CIR # 6808



List Corners to be Indexed

Corners	Section	Twp	Range
NE COR SE $\frac{1}{4}$ SE $\frac{1}{4}$	3	76N	28W
NW COR SE $\frac{1}{4}$ SE $\frac{1}{4}$	3	76N	28W
E $\frac{1}{4}$ COR	3	76N	28W

I hereby certify that this land surveying document was prepared and the related survey work was performed by me or under my direct personal supervision and that I am a duly licensed Land Surveyor under the laws of the State of Iowa.

J.M. Hochstetler
 J.M. HOCHSTETLER
 License number 6808 Date 9/16/97
 My license renewal date is December 31, 1997.
 Pages or sheets covered by this seal: 1

