

COMPUTER RECORDED COMPARED  
REC \$ 5.00  
AUD \$  
R.M.F. \$ 1.00

MICHELLE UTSLER  
RECORDER  
MADISON COUNTY, IOWA

VANCE & HOCHSTETLER, P.C. CONSULTING ENGINEERS, WINTERSSET, IOWA (515)462-399

CHARLES T. VANCE, 110 West Green St., Winterset, Iowa 50273.  
JAMES M. HOCHSTETLER, 110 West Green St., Winterset, Iowa 50273  
SLS19-94

UNITED STATES PUBLIC LAND SURVEY CORNER CERTIFICATE

OF

Land Survey Monuments situated in Section 10, Township 74 N, Range 29 W, of the Fifth Principal Meridian, MADISON County, Iowa. Previously recorded in \_\_\_\_\_ in County Recorder's Office.

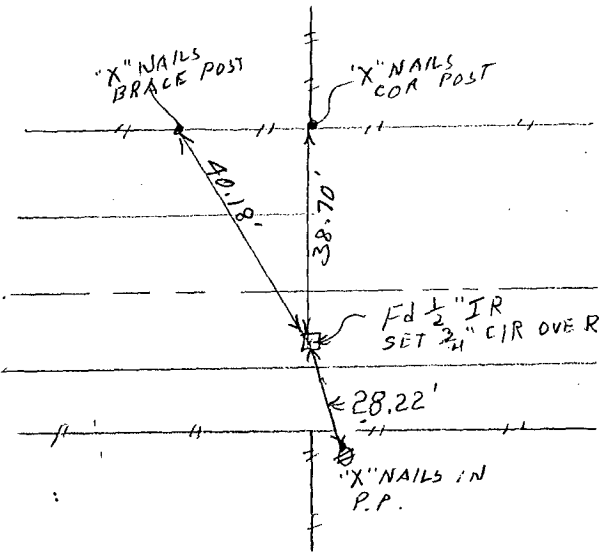
(Show reason for preparing this certificate, the evidence and detailed procedures used in establishing the corner positions and monumentation found or placed.)

Monument Description and Remarks: NE COR - Found 1/2" Iron Rod set on East Side of Stone 2 1/2 feet deep, raised to within 6" of surface with 3/4" rebar & placed cap # 6808 on rod.  
N 1/4 Cor. - Found bridge spike in centerline of right-of-way fences in line with property line fence North.

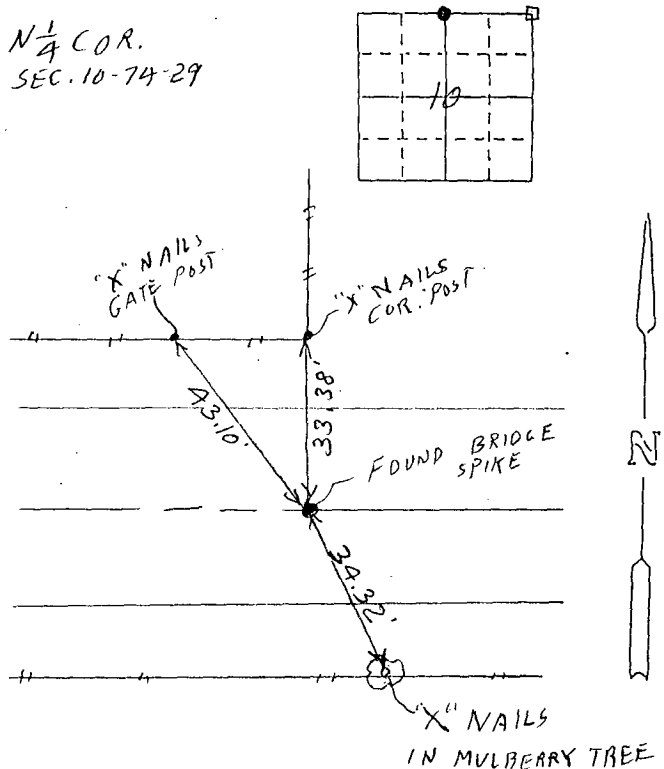
PLAN - VIEW

(Show a minimum of three reference ties to durable physical objects, relevant monuments and physical conditions that will enable recovery of the corner.)

NE COR  
SEC. 10-74-29

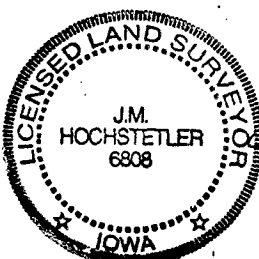


N 1/4 COR.  
SEC. 10-74-29



List Corners to be Indexed

Corners	Section	TWP	Range
NE COR.	10	74N	29W
N 1/4 Cor.	10	74N	29W



I hereby certify that this land surveying document was prepared and the related survey work was performed by me or under my direct personal supervision and that I am a duly licensed Land Surveyor under the laws of the State of Iowa.

*J.M. Hochstetler*  
J.M. HOCHSTETLER  
License number 6808  
Date 9/27/97  
My license renewal date is December 31, 1997.  
Pages or sheets covered by this seal: 1