

FILED NO. 1045
 BOOK 1 PAGE 542
 97 SEP 10. PM 3:11

RECORDED
 COMPARED
 REC \$ 5.00
 AUD \$ _____
 R.M.F. \$ 1.00

MICHELLE UTSLER
 RECORDER
 MADISON COUNTY, IOWA

VANCE & HOCHSTETLER, P.C. CONSULTING ENGINEERS, WINTERSSET, IOWA (515)462-3991

CHARLES T. VANCE, 110 West Green St., Winterset, Iowa 50273
 JAMES M. HOCHSTETLER, 110 West Green St., Winterset, Iowa 50273

SLSI 9-94

UNITED STATES PUBLIC LAND SURVEY CORNER CERTIFICATE

OF

Land Survey Monuments situated in Section 33, Township 77 North, Range 27 West, of the Fifth Principal Meridian, MADISON County, Iowa. Previously recorded in _____ in County Recorder's Office.

(book, page, document number, etc.)

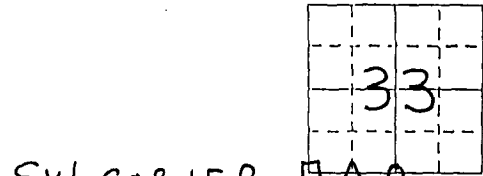
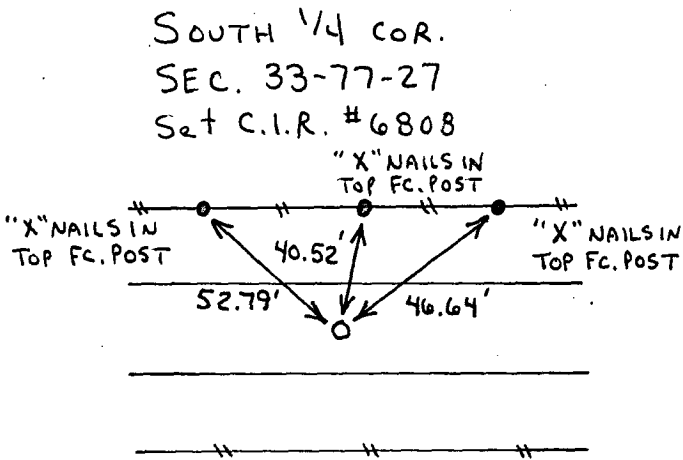
(Show reason for preparing this certificate, the evidence and detailed procedures used in establishing the corner positions and monumentation found or placed.)

Monument Description and Remarks:

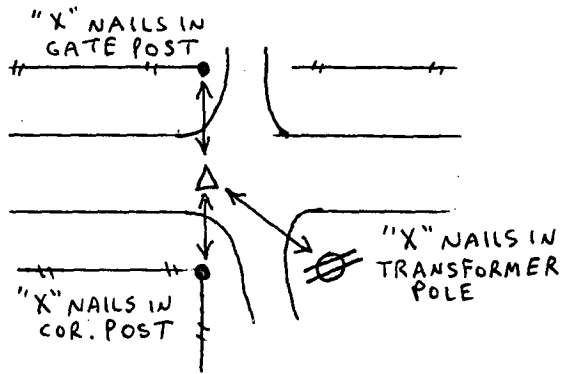
SOUTH 1/4 cor. - Set C.I.R. #6808 @ split between found points @ SW and SE corners of Section.
SW cor SE SW - Set C.I.R. #6808 @ split of S. line of SW 1/4
SW cor. - Fd. 1/2" Iron Pin

PLAN - VIEW

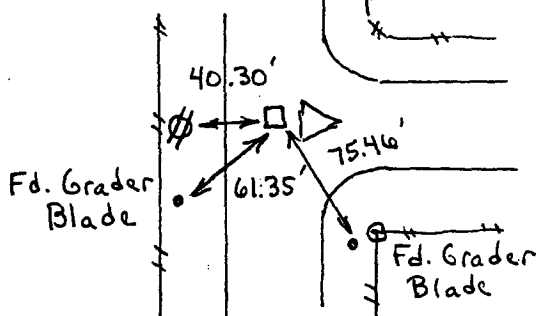
(Show a minimum of three reference ties to durable physical objects, relevant monuments and physical conditions that will enable recovery of the corner.)



SW CORNER
 SE 1/4 SW 1/4
 SEC. 33-77-27
 Set C.I.R. #6808



SW CORNER
 SEC. 33-77-27
 Fd. 1/2" Iron Pin



List Corners to be Indexed

Corners	Section	Twp	Range
S. 1/4 cor.	33	77N	27W
SW cor SE 1/4 SW 1/4	33	77N	27W
SW cor.	33	77N	27W

I hereby certify that this land surveying document was prepared and the related survey work was performed by me or under my direct personal supervision and that I am a duly licensed Land Surveyor under the laws of the State of Iowa.

J.M. Hochstetler
 J.M. HOCHSTETLER
 License number 6808
 My license renewal date is December 31, 1997.
 Pages or sheets covered by this seal: 1

