

RECORDED   
 PREPARED

FILED NO. **1522**

BOOK 1 PAGE 555

97 OCT 14 PM 3:32

REC \$ 3.00  
 AUD \$ \_\_\_\_\_  
 R.M.F. \$ 1.00

MICHELLE UTSELL  
 RECORDER  
 MADISON COUNTY, IOWA

VANCE & HOCHSTETLER, P.C. CONSULTING ENGINEERS, WINTERSSET, IOWA (515)462-3995

CHARLES T. VANCE, 110 West Green St., Winterset, Iowa 50273  
 JAMES M. HOCHSTETLER, 110 West Green St., Winterset, Iowa 50273  
 SLSI 9-94

UNITED STATES PUBLIC LAND SURVEY CORNER CERTIFICATE

OF

Land Survey Monuments situated in Section 31, Township 75 N, Range 27 W, of the Fifth Principal Meridian, MADISON County, Iowa. Previously recorded in \_\_\_\_\_ in County Recorder's Office.

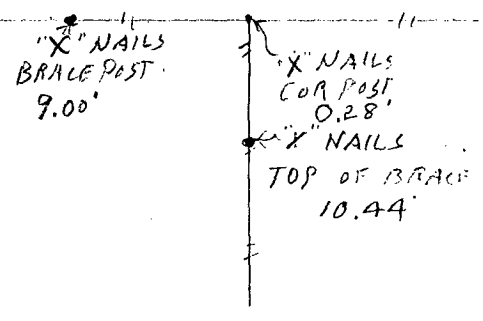
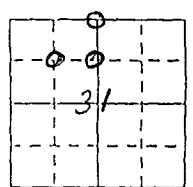
(Show reason for preparing this certificate, the evidence and detailed procedures used in establishing the corner positions and monumentation found or placed.)

Monument Description and Remarks: N 1/4 Cor - Set CIR # 6808 at intersection of property line fences from the South, West & East.  
SE Cor NE 1/4 NW 1/4 - Set CIR # 6808 at intersection of property line fence from North & West.  
SW Cor NE 1/4 NW 1/4 - Set CIR # 6808 at intersection of property line fences from South, East & West.

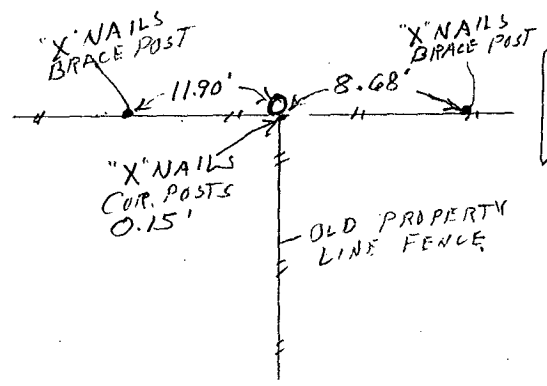
PLAN - VIEW

(Show a minimum of three reference ties to durable physical objects, relevant monuments and physical conditions that will enable recovery of the corner.)

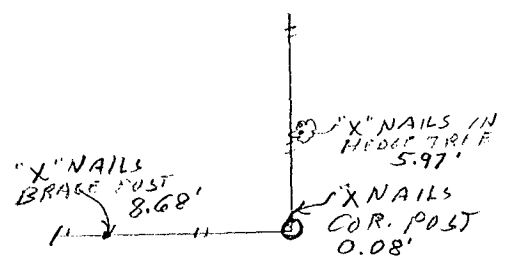
N 1/4 Cor  
SET CIR # 6808



SW COR  
NE 1/4 NW 1/4  
SET CIR # 6808

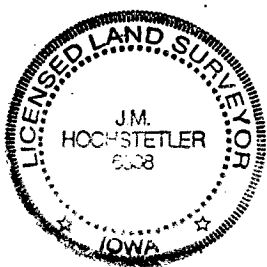


SE COR  
NE 1/4 NW 1/4  
SET CIR # 6808



List Corners to be Indexed

Corners	Section	Twp	Range
N 1/4 Cor.	31	75 N	27 W
SE COR	31	75 N	27 W
NE 1/4 NW 1/4	31	75 N	27 W
SW COR	31	75 N	27 W
NE 1/4 NW 1/4	31	75 N	27 W



I hereby certify that this surveying document was prepared and the related survey work was performed by me or under my direct personal supervision and that I am a duly licensed Land Surveyor under the laws of the State of Iowa.  
J.M. Hochstetler  
 J.M. HOCHSTETLER  
 License number 6808  
 Date 10/18/97  
 My license renewal date is December 31, 1997.  
 Pages or sheets covered by this seal: 1