

SEARCHED ✓  
RECORDED ✓  
INDEXED ✓

FILED NO. **1521**

BOOK 1 PAGE 554

97 OCT 14 PM 3:31

RECS 5.00

AUDS

R.M.F. 1.00

MICHELLE UTSLER  
RECORDER  
MADISON COUNTY, IOWA

VANCE & HOCHSTETLER, P.C. CONSULTING ENGINEERS, WINTERSSET, IOWA (515)462-3995

CHARLES T. VANCE, 110 West Green St., Winterset, Iowa 50273

JAMES M. HOCHSTETLER, 110 West Green St., Winterset, Iowa 50273

SLSI 9-94

### UNITED STATES PUBLIC LAND SURVEY CORNER CERTIFICATE

OF

Land Survey Monuments situated in Section 30, Township 75 N, Range 27 W, of the Fifth Principal Meridian, MADISON County, Iowa. Previously recorded in \_\_\_\_\_ in County Recorder's Office.

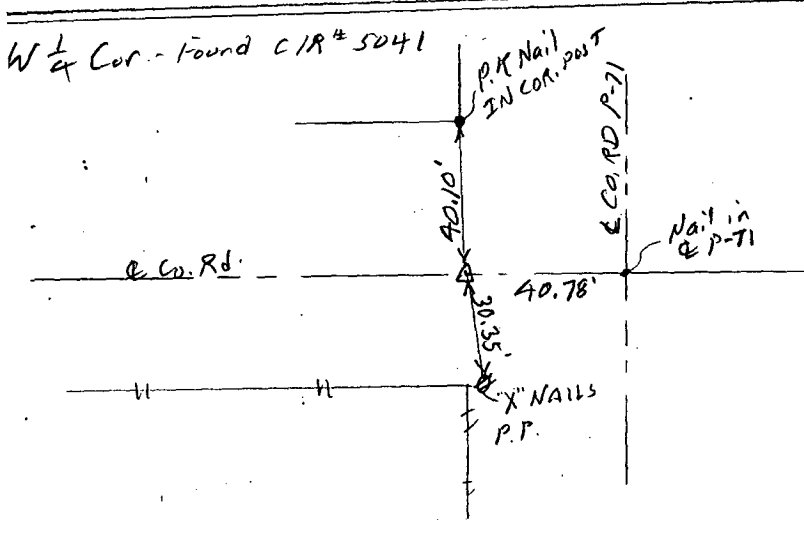
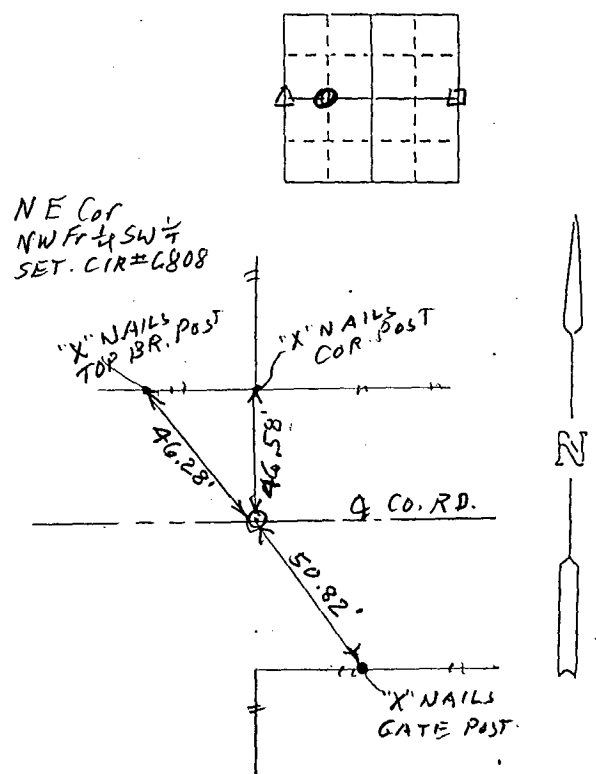
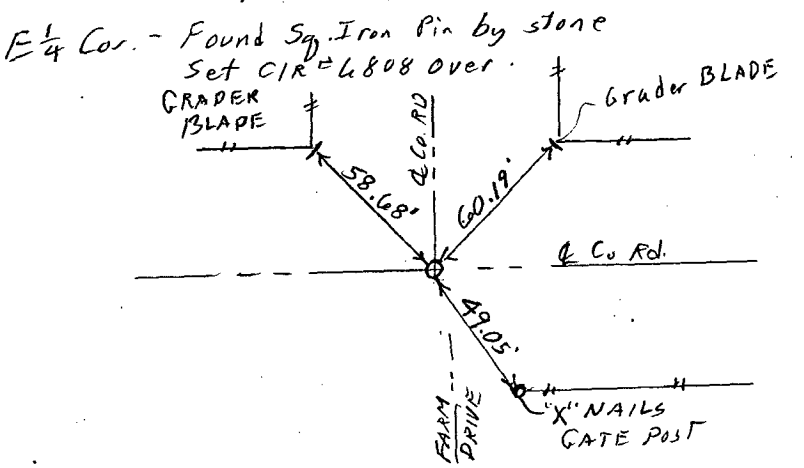
(book, page, document number, etc.)

(Show reason for preparing this certificate, the evidence and detailed procedures used in establishing the corner positions and monumentation found or placed.)

Monument Description and Remarks: E 1/4 Cor. - Found Square Iron pin beside Stone from Ties in Co. Engr. records, Set CIR # 6808 over pin to raise closer to surface.  
W 1/4 Cor - Found CIR # 5041 Set for a survey in 1989.  
NE Cor NW Fr 1/4 SW 1/4 - Set CIR # 6808 on line between E 1/4 Cor & W 1/4 Cor in line with old Property line fences N. & S.

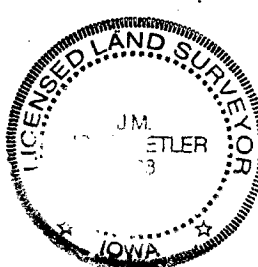
### PLAN - VIEW

(Show a minimum of three reference ties to durable physical objects, relevant monuments and physical conditions that will enable recovery of the corner.)



### List Corners to be Indexed

Corners	Section	TWP	Range
E 1/4 Cor.	30	75N	27W
W 1/4 Cor.	30	75N	27W
NE COR NW Fr 1/4 SW 1/4	30	75N	27W



I hereby certify that this land surveying document was prepared and the related survey work was performed by me or under my direct personal supervision and that I am a duly licensed Land Surveyor under the laws of the State of Iowa.

*J. M. Hochstetler*  
J.M. HOCHSTETLER

License number 6808

Date 10/6/97

My license renewal date is December 31, 1997.

Pages or sheets covered by this seal: 1