

RECORDED
PREPARED

FILED NO. **1519**
BOOK 1 PAGE 552

REC \$ 5.00
AUD \$ _____
R.M.F. \$ 1.00

97 OCT 14 PM 3:29
MICHELLE UTSELL
RECORDER
MADISON COUNTY, IOWA

VANCE & HOCHSTETLER, P.C. CONSULTING ENGINEERS, WINTERSSET, IOWA (515)462-3995

CHARLES T. VANCE, 110 West Green St., Winterset, Iowa 50273
JAMES M. HOCHSTETLER, 110 West Green St., Winterset, Iowa 50273

SLSI 9-94

UNITED STATES PUBLIC LAND SURVEY CORNER CERTIFICATE

OF
Land Survey Monuments situated in Section 24, Township 74 North, Range
29 West, of the Fifth Principal Meridian, MADISON County, Iowa.
Previously recorded in _____ in County Recorder's Office.
(book, page, document number, etc.)

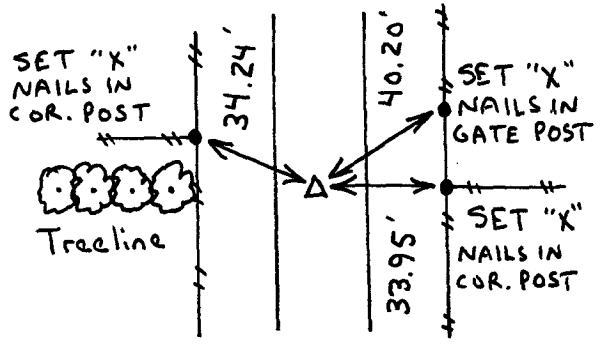
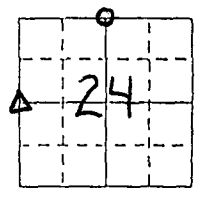
(Show reason for preparing this certificate, the evidence and detailed procedures used in establishing the corner positions and monumentation found or placed.)

Monument Description and Remarks:
WEST 1/4 COR. - Set C.I.R. #6808 at R.O.W. split in line with
fence to East & tree line to West.
NORTH 1/4 COR. - Set C.I.R. #6808 at centerline intersection
of a "T" intersection.

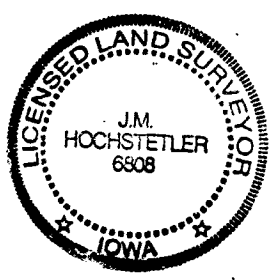
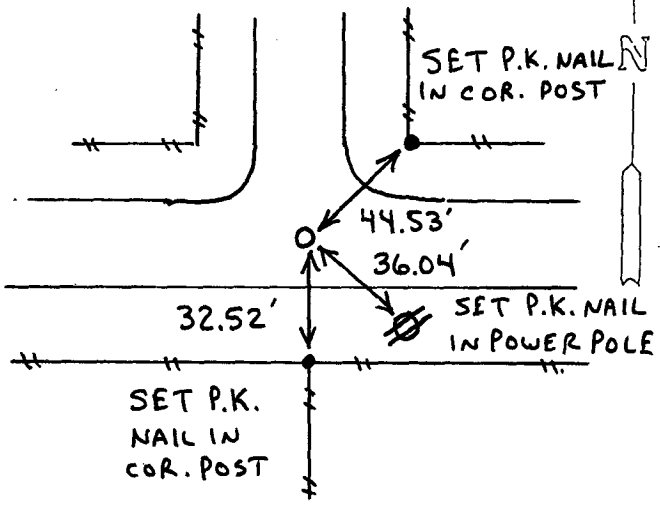
PLAN - VIEW

(Show a minimum of three reference ties to durable physical objects, relevant monuments and physical conditions that will enable recovery of the corner.)

WEST 1/4 COR.
SEC. 24-74-29
Set C.I.R. #6808



NORTH 1/4 COR.
SEC. 24-74-29
Set C.I.R. #6808



I hereby certify that this ~~land~~ surveying document was prepared and the related survey work was performed by me or under my direct personal supervision and that I am a duly licensed Land Surveyor under the laws of the State of Iowa.
J.M. Hochstetler
J.M. HOCHSTETLER
License number 6808
Date 10/6/97
My license renewal date is December 31, 1997.
Pages or sheets covered by this seal: _____

List Corners to be Indexed

Corners	Section	Twp	Range
W. 1/4 cor.	24	74 N	29 W
N. 1/4 cor.	24	74 N	29 W