

INDEXED ✓
RECORDED ✓
COMPALED ✓

FILED NO. 980

BOOK 1 PAGE 534

97 SEP -5 PM 4:09

REC'D *[Signature]*
AUD \$ _____
R.M.F. \$ _____

MICHELLE UTSLET
RECORDER
MADISON COUNTY, IOWA

Prepared By: J. Brian Morrissey, Madison Co. Engineer, P.O. Box 152 Winterset, IA 50273, Telephone (515)462-1136

UNITED STATES PUBLIC LAND SURVEY CORNER CERTIFICATE OF

Land Survey Monuments situated in Section 33, Township 74 N, Range 26 W, of the Fifth Principal Meridian, Madison County, Iowa.
Previously recorded in BOOK 1 PAGE 348 in County Recorders Office.

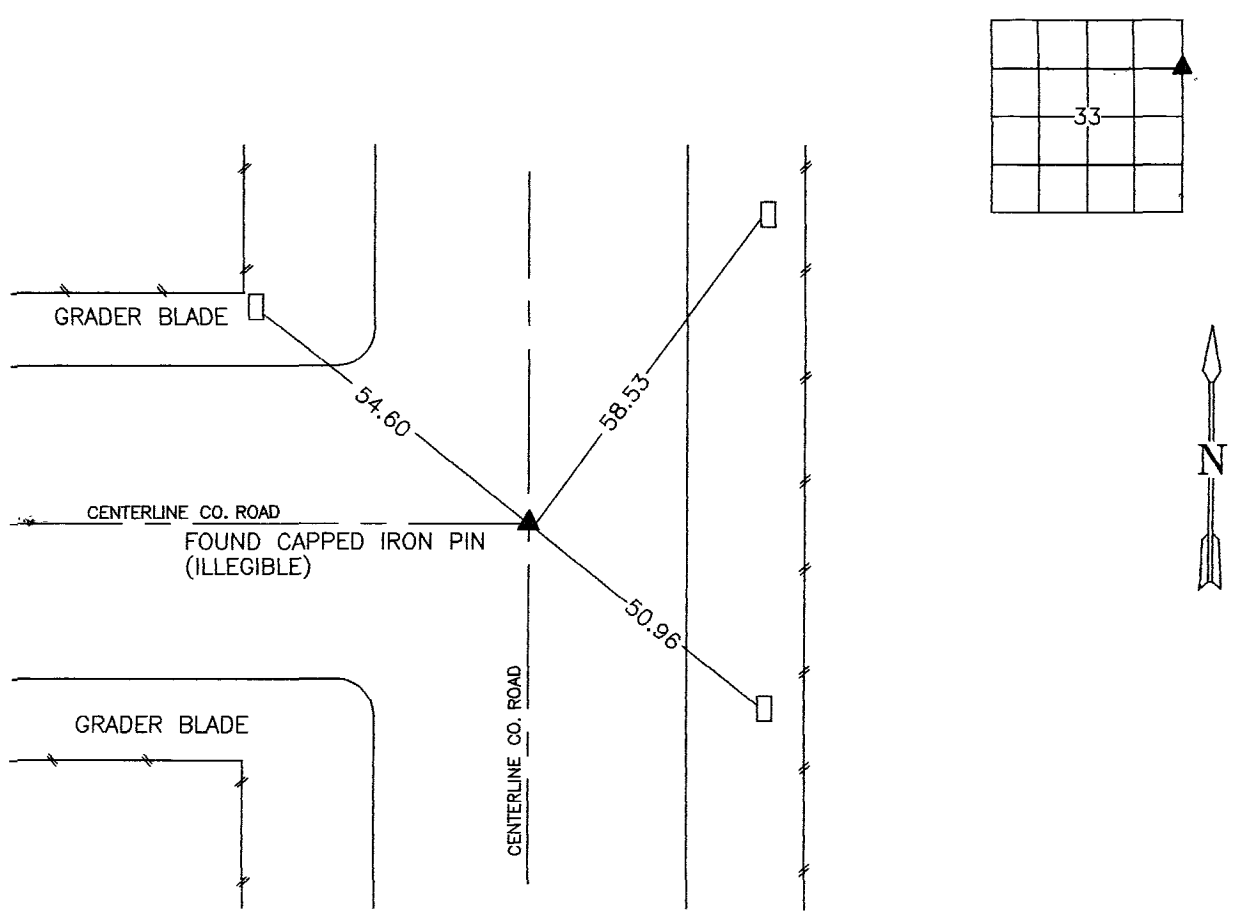
(book, page, document number, etc.)

(Show reason for preparing this certificate, the evidence and detailed procedures used in establishing the corner positions and monumentation found or placed.)

Monument Description and Remarks: FOUND CAPPED IRON PIN (ILLEGIBLE); CORNER TIES PREVIOUSLY ON RECORD IN THE MADISON COUNTY RECORDER'S OFFICE. ACCEPTED POSITION.

PLAN VIEW

(Show a minimum of three reference ties to durable physical objects, relevant monuments and physical conditions that will enable recovery of the corner.)



SE. COR., NE. 1/4, NE. 1/4 SEC. 33

NOTE: ALL TIES TO "X" IN GRADER BLADES UNLESS NOTED



I hereby certify that the survey work was completed and this certificate was prepared by me or under my direct personal supervision and that I am a duly Licensed Land Surveyor under the laws of the State of Iowa.

Signature: *J. Brian Morrissey* Date: 9/5/97
J. Brian Morrissey

License number 7995.
My license renewal date is December 31, 1997.