

✓
 RECORDED ✓
 COMPARED ✓

FILED NO. **1043**

BOOK 1 PAGE 540

97 SEP 10 PM 3:08

REC \$ 5.00

AUD \$ _____

R.M.F. \$ 1.00

MICHELLE UTSLER
 RECORDER
 MADISON COUNTY, IOWA

VANCE & HOCHSTETLER, P.C. CONSULTING ENGINEERS, WINTERSSET, IOWA (515)462-399

CHARLES T. VANCE, 110 West Green St., Winterset, Iowa 50273
 JAMES M. HOCHSTETLER, 110 West Green St., Winterset, Iowa 50273

SLSI 9-94

UNITED STATES PUBLIC LAND SURVEY CORNER CERTIFICATE

OF

Land Survey Monuments situated in Section 24, Township 74 North, Range 26 West, of the Fifth Principal Meridian, MADISON County, Iowa.
 Previously recorded in _____ in County Recorder's Office.

(book, page, document number, etc.)

(Show reason for preparing this certificate, the evidence and detailed procedures used in establishing the corner positions and monumentation found or placed.)

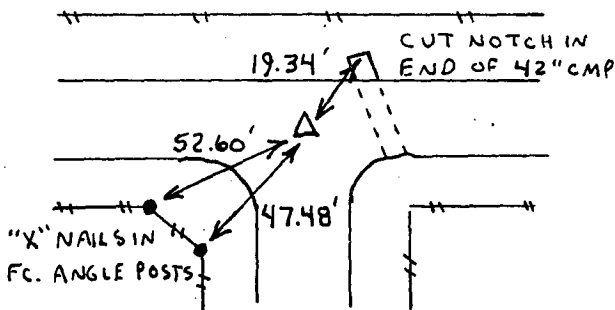
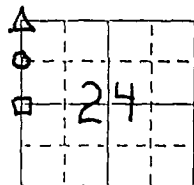
Monument Description and Remarks:

NW cor. - Set C.I.R. #6808 at intersection of R.O.W. splits
SW cor. NW 1/4 NW 1/4 - Set C.I.R. #6808 at split between NW cor. & West 1/4 cor.
W. 1/4 cor. - Set C.I.R. #6808 at R.O.W. split in line with prop. line fence to East.

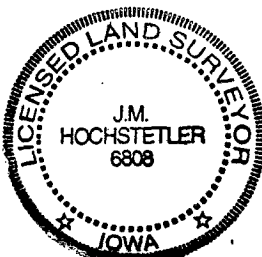
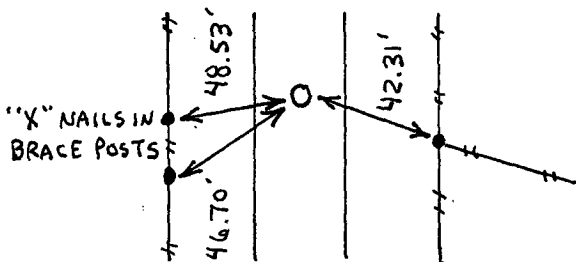
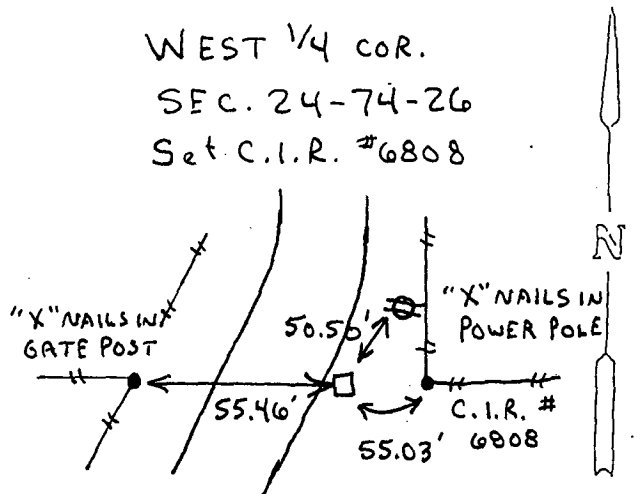
PLAN - VIEW

(Show a minimum of three reference ties to durable physical objects, relevant monuments and physical conditions that will enable recovery of the corner.)

NW CORNER
 SEC. 24-74-26
 Set C.I.R. #6808



SW CORNER
 NW 1/4 NW 1/4
 SEC. 24-74-26
 Set C.I.R. #6808



I hereby certify that this land surveying document was prepared and the related survey work was performed by me or under my direct personal supervision and that I am a duly licensed Land Surveyor under the laws of the State of Iowa.

J.M. Hochstetler
 J.M. HOCHSTETLER
 License number 6808
 Date 8/18/97
 My license renewal date is December 31, 1997.
 Pages or sheets covered by this seal: 1

List Corners to be Indexed

Corners	Section	Twp	Range
NW cor.	24	74N	26W
SW cor. NW 1/4 NW 1/4	24	74N	26W
W. 1/4 cor.	24	74N	26W