

FILED NO. 984
 BOOK 1 PAGE 538
 97 SEP -5 PM 4:13
 MICHELLE UTSLER
 RECORDER
 MADISON COUNTY, IOWA

RECORDED ✓
 COMPARED ✓
 RECS Mosee
 AUD C _____
 R.M.F. C _____

Prepared By: J. Brian Morrissey, Madison Co. Engineer, P.O. Box 152 Winterset, IA 50273, Telephone (515)462-1136

UNITED STATES PUBLIC LAND SURVEY CORNER CERTIFICATE OF

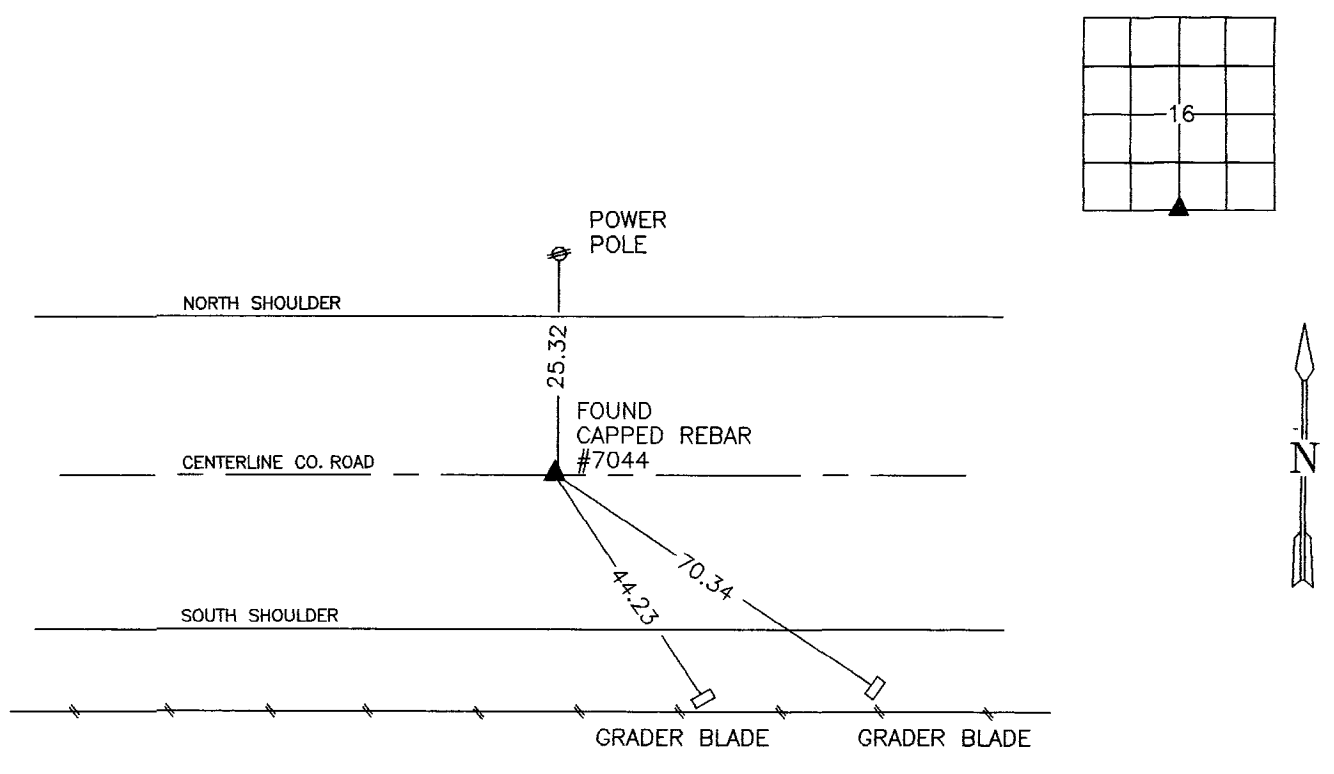
Land Survey Monuments situated in Section 16, Township 77 N, Range 27 W, of the Fifth Principal Meridian, Madison County, Iowa.
 Previously recorded in N.A. in County Recorders Office.
 (book, page, document number, etc.)

(Show reason for preparing this certificate, the evidence and detailed procedures used in establishing the corner positions and monumentation found or placed.)

Monument Description and Remarks: _____
FOUND CAPPED IRON PIN, #7044: POSITION VERIFIED FROM THE SW. COR., SE. 1/4
SEC. 16 AND CORNER TIES PREVIOUSLY ON RECORD IN CO. ENGINEER'S OFFICE.
ACCEPTED POSITION.

PLAN VIEW

(Show a minimum of three reference ties to durable physical objects, relevant monuments and physical conditions that will enable recovery of the corner.)



SW. COR., SE. 1/4, SEC. 16

NOTE: ALL TIES TO "X" IN GRADER BLADE UNLESS NOTED



I hereby certify that the survey work was completed and this certificate was prepared by me or under my direct personal supervision and that I am a duly Licensed Land Surveyor under the laws of the State of Iowa.

Signature: J. Brian Morrissey Date: 9/5/97
 J. Brian Morrissey

License number 7995.
 My license renewal date is December 31, 1997.