

FILED ✓
RECORDED ✓
COMPARED ✓

FILED NO. 983

BOOK 1 PAGE 537

97 SEP -5 PM 4: 12

REC & [Signature]
AUD & _____
R.M.F. & _____

MICHELLE UTSLER
RECORDER
MADISON COUNTY, IOWA

Prepared By: J. Brian Morrissey, Madison Co. Engineer, P.O. Box 152 Winterset, IA 50273, Telephone (515)462-1136

UNITED STATES PUBLIC LAND SURVEY CORNER CERTIFICATE OF

Land Survey Monuments situated in Section 16, Township 77 N, Range 27 W, of the Fifth Principal Meridian, Madison County, Iowa. Previously recorded in N.A. in County Recorders Office.

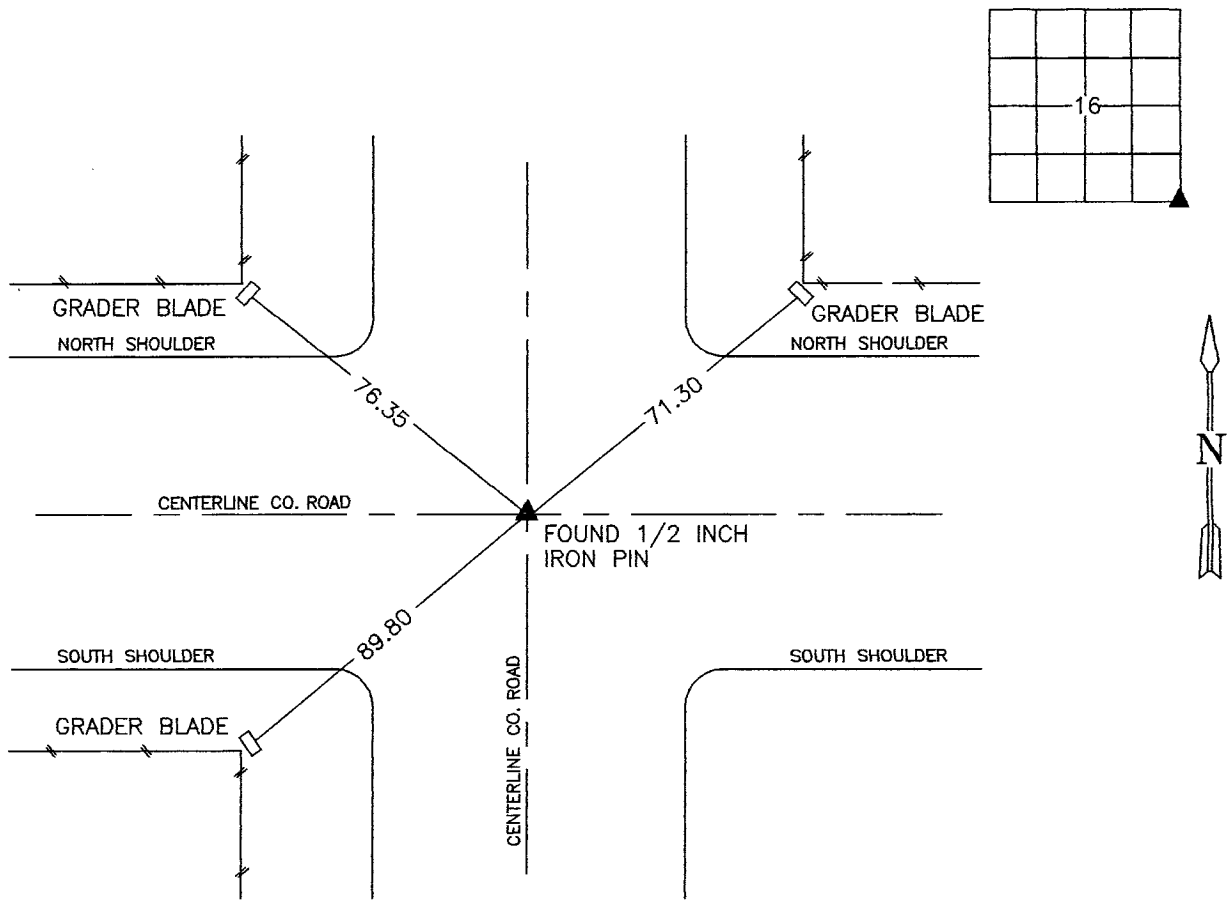
(book, page, document number, etc.)

(Show reason for preparing this certificate, the evidence and detailed procedures used in establishing the corner positions and monumentation found or placed.)

Monument Description and Remarks: FOUND 1/2" IRON PIN; POSITION VERIFIED FROM THE SW. COR., SE. 1/4, SEC. 16 AND CORNER TIES PREVIOUSLY ON RECORD IN CO. ENGINEER'S OFFICE. ACCEPTED POSITION.

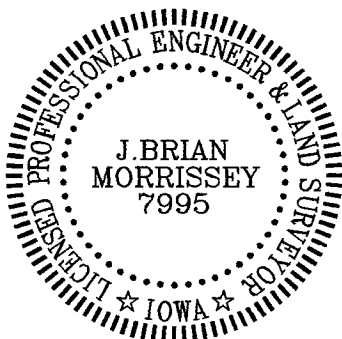
PLAN VIEW

(Show a minimum of three reference ties to durable physical objects, relevant monuments and physical conditions that will enable recovery of the corner.)



SE. COR., SE. 1/4, SEC. 16

NOTE: ALL TIES "X" IN GRADER BLADES UNLESS NOTED



I hereby certify that the survey work was completed and this certificate was prepared by me or under my direct personal supervision and that I am a duly Licensed Land Surveyor under the laws of the State of Iowa.

Signature: [Signature] Date: 9/5/97
J. Brian Morrissey

License number 7995.
My license renewal date is December 31, 1997.