

COMPUTER   
RECORDED   
COMPARED

FILED NO. 590  
BOOK 1 PAGE 512  
97 AUG -8 PM 2:47  
MICHELLE UTSLER  
RECORDER  
MADISON COUNTY, IOWA

REC \$ 5.00  
AUD \$ \_\_\_\_\_  
R.M.F. \$ 1.00

Prepared By: J. Brian Morrissey, Morrissey Surveying, 1926 Pammel Park Road, Winterset, Ia. 50273, Tel. (515) 462-2166

# UNITED STATES PUBLIC LAND SURVEY CORNER CERTIFICATE OF

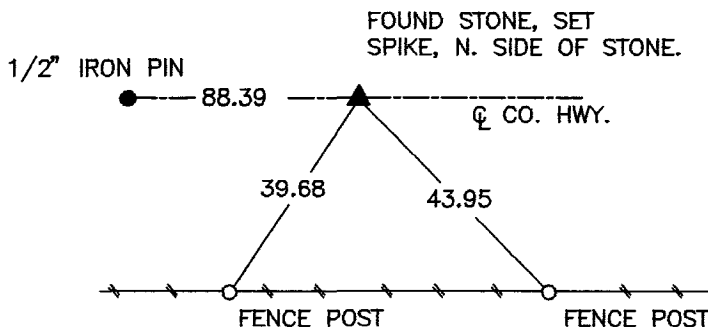
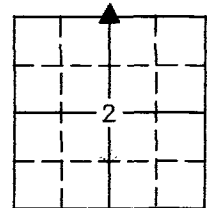
Land Survey Monuments situated in Section 2, Township 76 N, Range 27 W, of the Fifth Principal Meridian, Madison County, Iowa.  
Previously recorded in N.A. in County Recorders Office.  
(book, page, document number, etc.)

(Show reason for preparing this certificate, the evidence and detailed procedures used in establishing the corner positions and monumentation found or placed.)

Monument Description and Remarks: Found stone-boulder previously used by Madison County for right of way acquisition and documented in old survey records in County Engineer's Office. Accepted position of stone, set spike north side of stone. Iron pin to west of stone previously used by P.L.S. #504 not accepted.

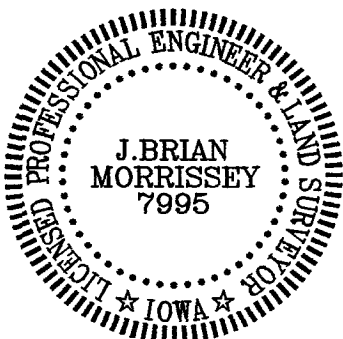
## PLAN VIEW

(Show a minimum of three reference ties to durable physical objects, relevant monuments and physical conditions that will enable recovery of the corner.)



NE. COR., NE. 1/4, NW. 1/4, SEC. 2

NOTE: ALL TIES TO "X" NAILS UNLESS NOTED



I hereby certify that the survey work was completed and this certificate was prepared by me or under my direct personal supervision and that I am a duly Licensed Land Surveyor under the laws of the State of Iowa.

Signature: J. Brian Morrissey Date: 8/8/97  
J. Brian Morrissey

License number 7995.  
My license renewal date is December 31, 1997.