

RECORDED   
 COMPARED

FILED NO. **634**

BOOK 1 PAGE 519

97 AUG 12 PM 2:57

MICHELLE UTSLER  
 RECORDER  
 MADISON COUNTY, IOWA

\$5.00  
 \$1.00

VANCE & HOCHSTETLER, P.C. CONSULTING ENGINEERS, WINTERSSET, IOWA (515)462-3995

CHARLES T. VANCE, 110 West Green St., Winterset, Iowa 50273  
 JAMES M. HOCHSTETLER, 110 West Green St., Winterset, Iowa 50273  
 SLSI 9-94

UNITED STATES PUBLIC LAND SURVEY CORNER CERTIFICATE

OF

Land Survey Monuments situated in Section 27, Township 75 N, Range 28 W,  
 of the Fifth Principal Meridian, MADISON County, Iowa.  
 Previously recorded in \_\_\_\_\_ in County Recorder's Office.  
(book, page, document number, etc.)

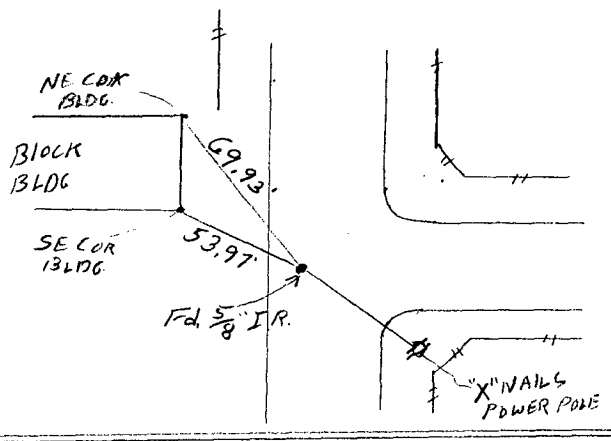
(Show reason for preparing this certificate, the evidence and detailed procedures used in establishing the corner positions and monumentation found or placed.)

Monument Description and Remarks: W 1/4 Cor - Found 5/8" IRON ROD which  
matched  $\Phi$  Road East and  $\Phi$  Road North & South  
Center of Section - Set CIR #6808 on split of right-of-way fences  
in line with Property line fences North and South.  
SW Cor. SE 1/4 NW 1/4 - Set CIR #6808 on line between W 1/2 Cor  
and Center of Section at midpoint.

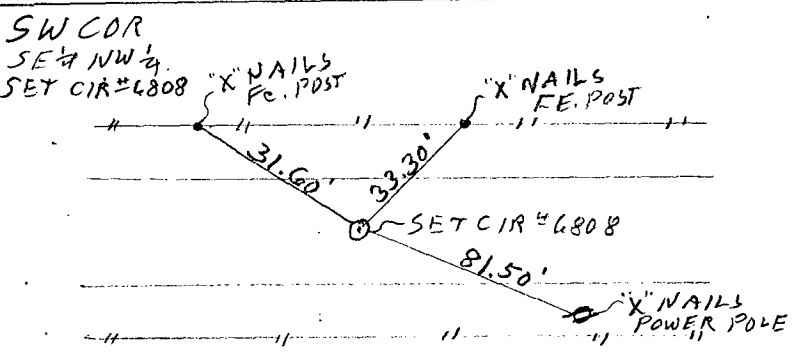
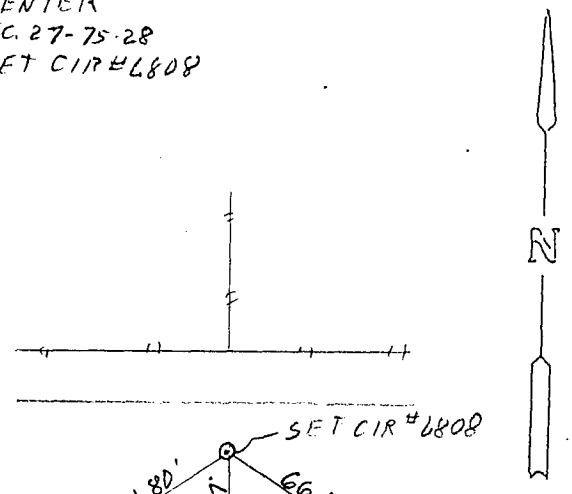
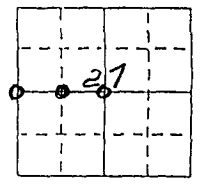
PLAN - VIEW

(Show a minimum of three reference ties to durable physical objects, relevant monuments and physical conditions that will enable recovery of the corner.)

W 1/4 Cor SEC. 27-75-28  
 Fd 5/8" Iron ROD.

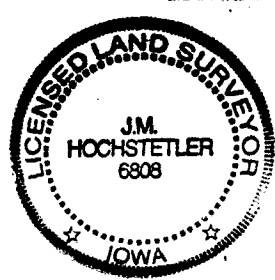


CENTER  
 SEC. 27-75-28  
 SET CIR #6808



List Corners to be Indexed

Corners	Section	Twp	Range
W 1/4 Cor	27	T 75N	R 28W
CENTER	27	T 75N	R 28W
SW COR SE 1/4 NW 1/4	27	T 75N	R 28W



I hereby certify that this land surveying document was prepared and the related survey work was performed by me or under my direct personal supervision and that I am a duly licensed Land Surveyor under the laws of the State of Iowa.  
*J.M. Hochstetler*  
 J.M. HOCHSTETLER  
 License number 6808  
 My license renewal date is December 1997  
 Pages or sheets covered by this seal: 1