

ENTERED
RECORDED
COMPARED

SLSI 7-90

FILED NO. **404**

BOOK 1 PAGE 497

97 JUL 29 PM 2:39

MICHELLE UTSLER
RECORDER
MADISON COUNTY, IOWA

REC \$ 5.00
AUD \$ _____
R.M.F. \$ 1.00

STUMBO AND ASSOCIATES LAND SURVEYING, INC. P.O. BOX 1664 AMES, IOWA 50010 Ph#515-233-3689

UNITED STATES PUBLIC LAND SURVEY CORNER CERTIFICATE OF

Land Survey Monuments situated in Section 27 Township 77 North, Range 27 West of the Fifth Principal Meridian, MADISON County, Iowa.
Previously recorded N/A

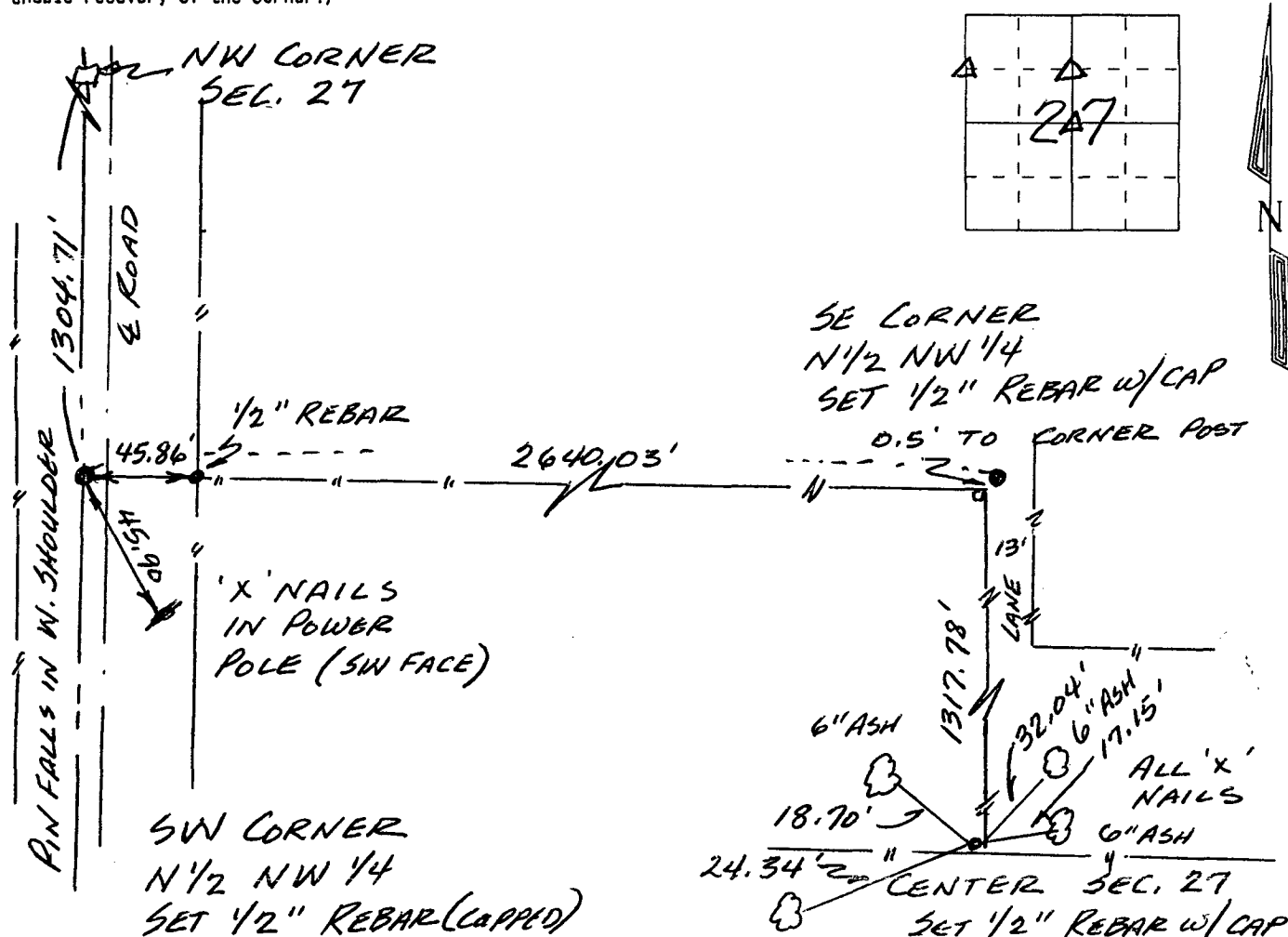
(BOOK, PAGE / INST. NO. / CABINET, SLIDE)

(Show reason for preparing this certificate, the evidence and detailed procedures used in establishing the corner positions and monumentation found or placed.)

Monument Description and Remarks: NO CERTIFICATE PREVIOUSLY RECORDED FOR THESE CORNERS.

PLAN - VIEW

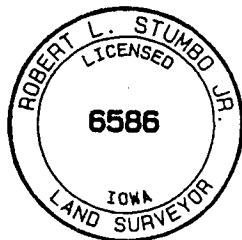
(Show a minimum of three reference ties to durable physical objects, relevant monuments and physical conditions that will enable recovery of the corner.)



Certification: I hereby certify that this land surveying document was prepared and the related survey work was performed by me or under my direct personal supervision and that I am a duly licensed Land Surveyor under the laws of the State of Iowa.

Robert L. Stumbo, Jr.
Robert L. Stumbo, Jr. License #6586
My license renewal date is December 31, 1998
Date: 7-25-97

SEAL



List Corners to be Indexed

Corners	Section	Twp	Range
CENTER	27	77	27
SW COR. N 1/2 NW 1/4	27	77	27
SE COR N 1/2 NW 1/4	27	77	27

JOB NO. 13658