

COMPUTER   
 RECORDED   
 COMPARED

SLSI 7-90

FILED NO. **403**

BOOK 1 PAGE 496

97 JUL 29 PM 2:38

MICHELLE UTSLEY  
 RECORDER  
 MADISON COUNTY, IOWA

STUMBO AND ASSOCIATES LAND SURVEYING, INC. P.O. BOX 1664 AMES, IOWA 50010 Ph#515-233-3689

**UNITED STATES PUBLIC LAND SURVEY CORNER CERTIFICATE OF**

Land Survey Monuments situated in Section 27 Township 77 North, Range 27 West of the Fifth Principal Meridian, MADISON County, Iowa.  
 Previously recorded N/A

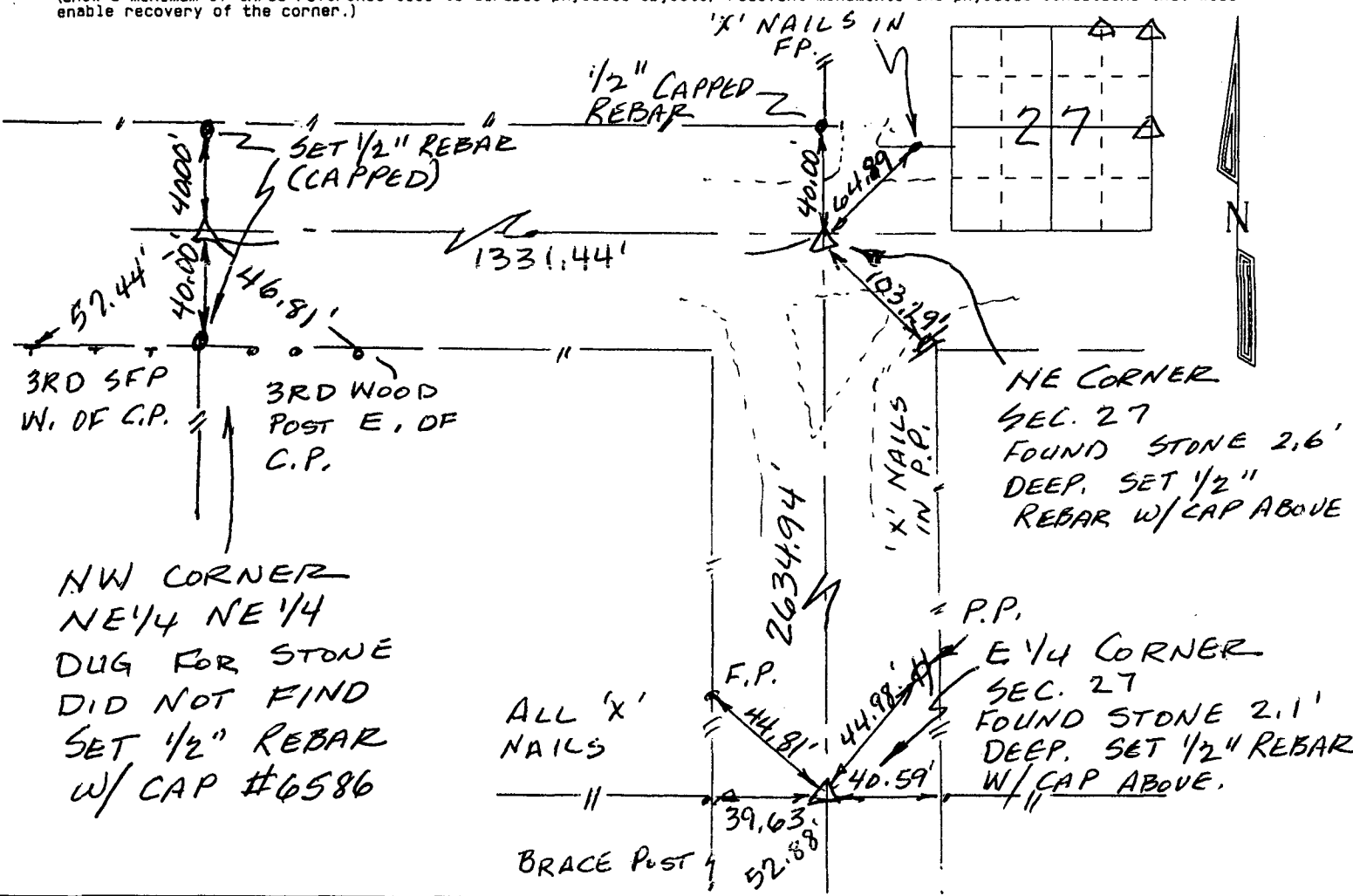
(BOOK, PAGE / INST. NO. / CABINET, SLIDE)

(Show reason for preparing this certificate, the evidence and detailed procedures used in establishing the corner positions and monumentation found or placed.)

Monument Description and Remarks: NO PREVIOUS CERTIFICATE FOR THESE CORNERS EXISTS.

**PLAN - VIEW**

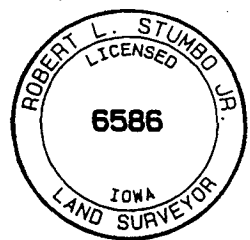
(Show a minimum of three reference ties to durable physical objects, relevant monuments and physical conditions that will enable recovery of the corner.)



Certification: I hereby certify that this land surveying document was prepared and the related survey work was performed by me or under my direct personal supervision and that I am a duly licensed Land Surveyor under the laws of the State of Iowa.

*Robert L. Stumbo, Jr.*  
 Date: 7-25-97  
 Robert L. Stumbo, Jr. License #6586  
 My license renewal date is December 31, 1998

SEAL



List Corners to be Indexed

Corners	Section	Twp	Range
NE	27	77	27
E 1/4	27	77	27
NW COR	27	77	27
NE 1/4 NE 1/4	27	77	27