

COMPUTER   
 RECORDED   
 COMPARED

FILED NO. **402**  
 BOOK 1 PAGE 495  
 97 JUL 29 PM 2:37

REC. 5.00  
 SUB. 1.00

MICHELLE UTSLER  
 RECORDER  
 MADISON COUNTY, IOWA

STUMBO AND ASSOCIATES LAND SURVEYING, INC. P.O. BOX 1664 AMES, IOWA 50010 Ph#515-233-3689

**UNITED STATES PUBLIC LAND SURVEY CORNER CERTIFICATE OF**

Land Survey Monuments situated in Section 22 Township 27 North, Range 27 West of the Fifth Principal Meridian, MADISON County, Iowa.

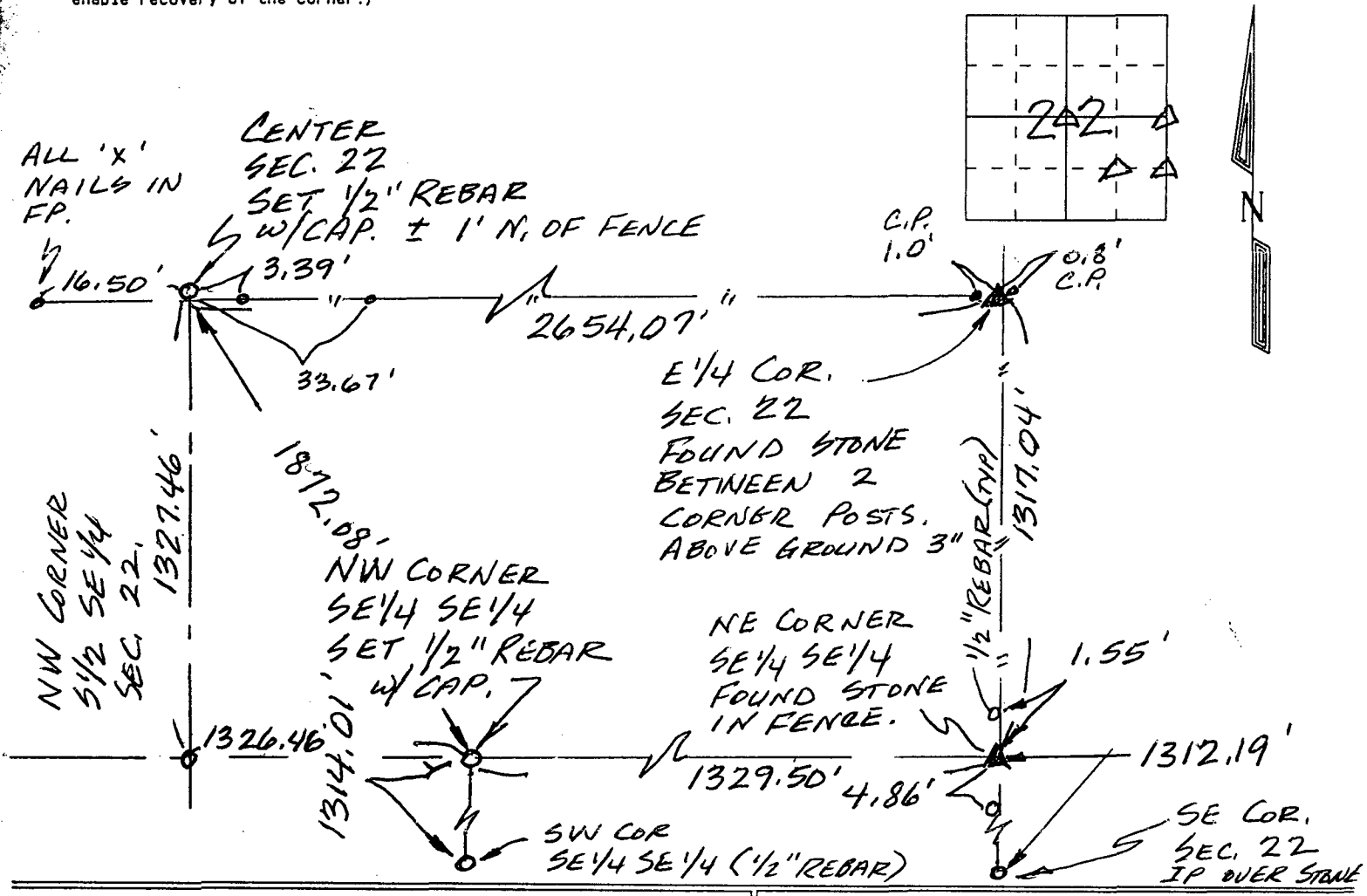
Previously recorded N/A  
(BOOK, PAGE / INST. NO. / CABINET, SLIDE)

(Show reason for preparing this certificate, the evidence and detailed procedures used in establishing the corner positions and monumentation found or placed.)

Monument Description and Remarks: NO PREVIOUS CERTIFICATES EXIST FOR THESE CORNERS.

**PLAN - VIEW**

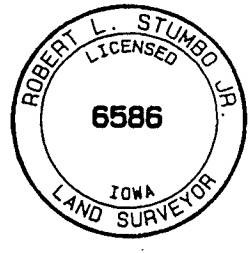
(Show a minimum of three reference ties to durable physical objects, relevant monuments and physical conditions that will enable recovery of the corner.)



Certification: I hereby certify that this land surveying document was prepared and the related survey work was performed by me or under my direct personal supervision and that I am a duly licensed Land Surveyor under the laws of the State of Iowa.

*Robert L. Stumbo*  
 Robert L. Stumbo, Jr. License #6586  
 My license renewal date is December 31, 1998  
 Date: 7-25-97

SEAL



List Corners to be Indexed

Corners	Section	Twp	Range
E 1/4	27	77	27
CENTER	27	77	27
NW COR. SE 1/4 SE 1/4	27	77	27
NE COR. SE 1/4 SE 1/4	27	77	27

JOB NO. 13658