

RECORDED  
COMPARED

FILED NO. 60

BOOK 1 PAGE 481

97 JUL -2 PM 4:37

MICHELLE UTSLEN  
RECORDER  
MADISON COUNTY, IOWA

3.00  
1.00

VANCE & HOCHSTETLER, P.C. CONSULTING ENGINEERS, WINTERSSET, IOWA (515)462-391

CHARLES T. VANCE, 110 West Green St., Winterset, Iowa 50273  
JAMES M. HOCHSTETLER, 110 West Green St., Winterset, Iowa 50273

SLS19-94

UNITED STATES PUBLIC LAND SURVEY CORNER CERTIFICATE

OF

Land Survey Monuments situated in Section 14, Township 76 North, Range 27 West, of the Fifth Principal Meridian, MADISON County, Iowa. Previously recorded in \_\_\_\_\_ in County Recorder's Office.

(book, page, document number, etc.)

(Show reason for preparing this certificate, the evidence and detailed procedures used in establishing the corner positions and monumentation found or placed.)

Monument Description and Remarks:

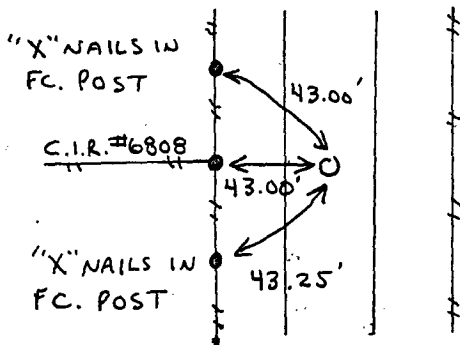
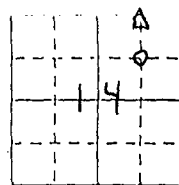
SE cor. NW. 1/4 NE. 1/4 - Set C.I.R. #6808 @ R.O.W. split

NE cor. NW. 1/4 NE. 1/4 - Set C.I.R. #6808 (pin is set at the split between the SE cor. NW NE of sec. 14 and a pin found at the NE cor. SW SE of sec. 11.)

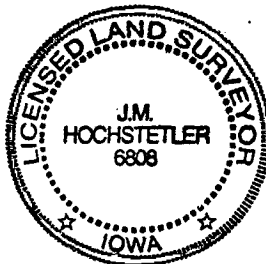
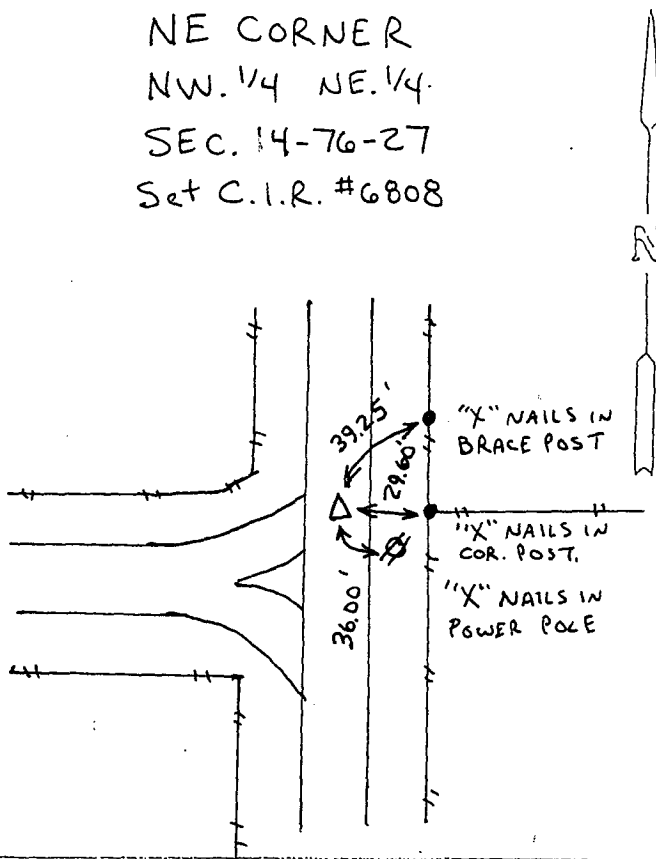
PLAN - VIEW

(Show a minimum of three reference ties to durable physical objects, relevant monuments and physical conditions that will enable recovery of the corner.)

SE CORNER  
NW. 1/4 NE. 1/4  
SEC. 14-76-27  
Set C.I.R. #6808



NE CORNER  
NW. 1/4 NE. 1/4  
SEC. 14-76-27  
Set C.I.R. #6808



I hereby certify that this surveying document was prepared and the related survey work was performed by me or under my direct personal supervision and that I am a duly licensed Land Surveyor under the laws of the State of Iowa.

J. M. Hochstetler  
J.M. HOCHSTETLER  
License number 6808 Date 7/2/97  
My license renewal date is December 31, 1997.  
Pages or sheets covered by this seal: 1

List Corners to be Indexed

Corners	Section	Twp	Range
SE cor NW. 1/4 NE. 1/4	14	76N	27W
NE cor NW. 1/4 NE. 1/4	14	76N	27W