

COMPUTER
RECORDED
COMPARED

FILED NO. **3616**

BOOK 1 PAGE 479

97 JUN 19 PM 4:00

REG. \$ 15.00

AUD. \$

R.M.F. \$ 1.00

MICHELLE UTSLEY
RECORDER
MADISON COUNTY, IOWA

VANCE & HOCHSTETLER, P.C. CONSULTING ENGINEERS, WINTERSSET, IOWA (515)462-399

CHARLES T. VANCE, 110 West Green St., Winterset, Iowa 50273
JAMES M. HOCHSTETLER, 110 West Green St., Winterset, Iowa 50273

SLS19-94

UNITED STATES PUBLIC LAND SURVEY CORNER CERTIFICATE

OF

Land Survey Monuments situated in Section 23, Township 75 N, Range 26 W, of the Fifth Principal Meridian, MADISON County, Iowa. Previously recorded in _____ in County Recorder's Office.

(book, page, document number, etc.)

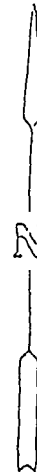
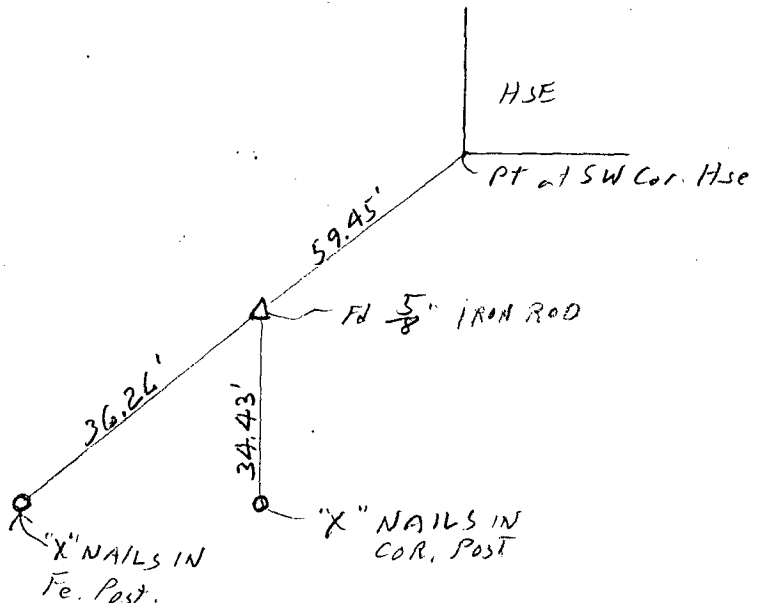
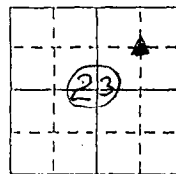
(Show reason for preparing this certificate, the evidence and detailed procedures used in establishing the corner positions and monumentation found or placed.)

Monument Description and Remarks: Found $\frac{5}{8}$ " Iron Rod with some deteriorated concrete around it.

PLAN - VIEW

(Show a minimum of three reference ties to durable physical objects, relevant monuments and physical conditions that will enable recovery of the corner.)

NW Cor. SE $\frac{1}{4}$ NE $\frac{1}{4}$



I hereby certify that this land surveying document was prepared and the related survey work was performed by me or under my direct personal supervision and that I am a duly licensed Land Surveyor under the laws of the State of Iowa.

J.M. Hochstetler
J.M. HOCHSTETLER
License number 6808 Date 6/19/97

My license renewal date is December 31, 1997.

Pages or sheets covered by this seal: 1

List Corners to be Indexed

Corners	Section	Twp	Range
NW Cor. SE $\frac{1}{4}$ NE $\frac{1}{4}$	23	75N	26W