

COMPUTER   
 RECORDED   
 COMPARED

FILED NO. **3600**

BOOK 1 PAGE 478

97 JUN 18 PM 2:35

MICHELLE UTSLE  
 RECORDER  
 MADISON COUNTY, IOWA

REC S. W.  
 AUD S.  
 R.M.F. S. L. O.

VANCE & HOCHSTETLER, P.C. CONSULTING ENGINEERS, WINTERSSET, IOWA (515)462-399

CHARLES T. VANCE, 110 West Green St., Winterset, Iowa 50273  
 JAMES M. HOCHSTETLER, 110 West Green St., Winterset, Iowa 50273

SLS19-94

UNITED STATES PUBLIC LAND SURVEY CORNER CERTIFICATE

OF

Land Survey Monuments situated in Section 25, Township 75 North, Range 29 West, of the Fifth Principal Meridian, Madison County, Iowa.  
 Previously recorded in \_\_\_\_\_ in County Recorder's Office.

(book, page, document number, etc.)

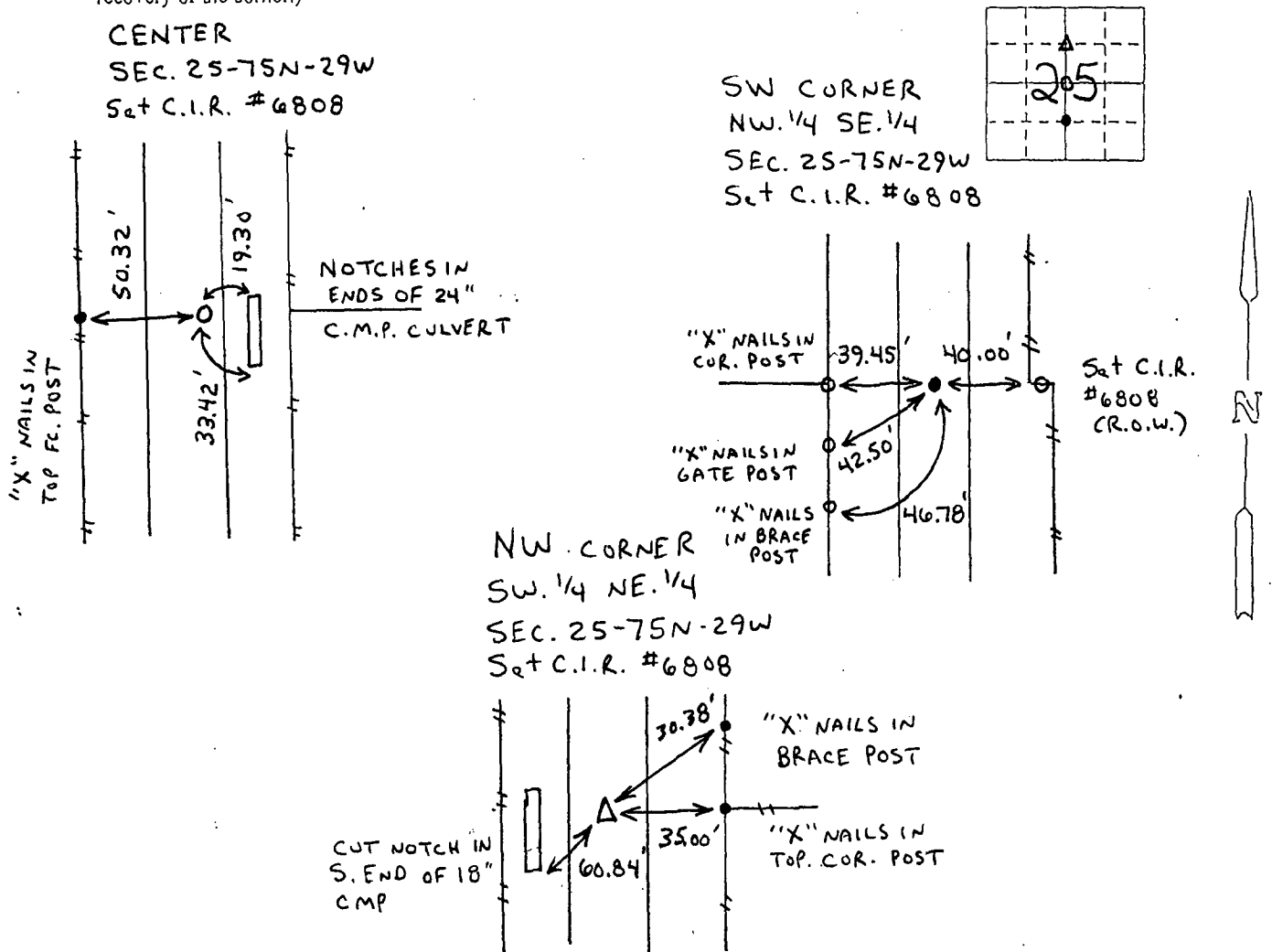
(Show reason for preparing this certificate, the evidence and detailed procedures used in establishing the corner positions and monumentation found or placed.)

Monument Description and Remarks:

Center - Set C.I.R. #6808 @ R.O.W. split (in line w/Fence to West)  
SW cor. NW. 1/4 SE. 1/4 - Set C.I.R. #6808 @ R.O.W. split (in line w/Fence to East)  
NW cor. SW. 1/4 NE. 1/4 - Set C.I.R. #6808 @ R.O.W. split

PLAN - VIEW

(Show a minimum of three reference ties to durable physical objects, relevant monuments and physical conditions that will enable recovery of the corner.)



List Corners to be Indexed

| Corners                 | Section | Twp | Range |
|-------------------------|---------|-----|-------|
| CENTER                  | 25      | 75N | 29W   |
| SW cor. NW. 1/4 SE. 1/4 | 25      | 75N | 29W   |
| NW cor. SW. 1/4 NE. 1/4 | 25      | 75N | 29W   |



I hereby certify that this land surveying document was prepared and the related survey work was performed by me or under my direct personal supervision and that I am a duly Licensed Land Surveyor under the laws of the State of Iowa.  
 J.M. HOCHSTETLER  
 License number 6808  
 My license renewal date is Dec. 1997  
 Date: 6/2/97  
 Pages or sheets covered by this survey: 1