

COMPUTER   
 RECORDED   
 COMPARED

FILED NO. **3021**  
 BOOK 1 PAGE 476  
 97 MAY -1 PM 4: 03

REC # 500  
 A.L.S. \_\_\_\_\_  
 R.M.F. \$ 1.00

MICHELLE UTSLEIN  
 RECORDER  
 MADISON COUNTY, IOWA

VANCE & HOCHSTETLER, P.C. CONSULTING ENGINEERS, WINTERSSET, IOWA (515)462-3995

CHARLES T. VANCE, 110 West Green St., Winterset, Iowa 50273  
 JAMES M. HOCHSTETLER, 110 West Green St., Winterset, Iowa 50273  
 SLSI 9-94

UNITED STATES PUBLIC LAND SURVEY CORNER CERTIFICATE

OF  
 Land Survey Monuments situated in Section 22, Township 74 North, Range  
26 West, of the Fifth Principal Meridian, Madison County, Iowa.  
 Previously recorded in \_\_\_\_\_ in County Recorder's Office.

(Show reason for preparing this certificate, the evidence and detailed procedures used in establishing the corner positions and monumentation found or placed.)

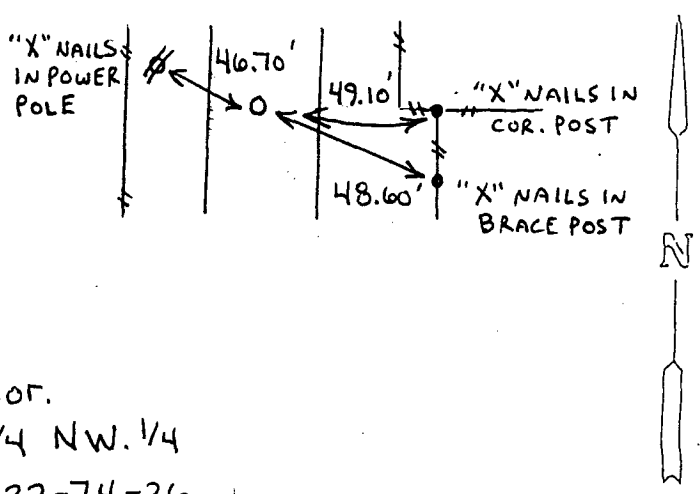
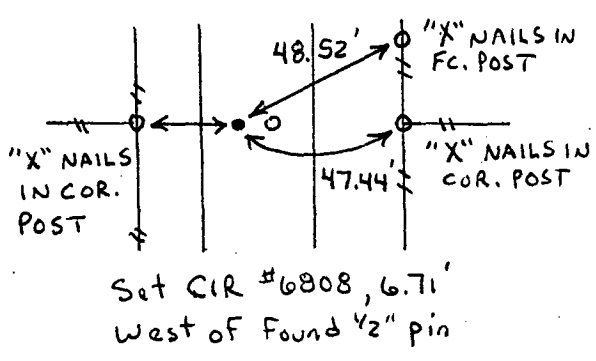
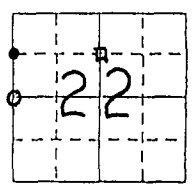
Monument Description and Remarks:  
NW cor. SW. 1/4 NW. 1/4 - Set C.I.R. #6808 West of Found 1/2" Iron Pin  
in line with E-W property fences.  
W. 1/4 cor. - Set C.I.R. #6808 @ E-W property lines based on pins found  
from 1979 survey North of this corner.  
NE cor. SE. 1/4 NW. 1/4 - Found stone @ fence corner.

PLAN - VIEW

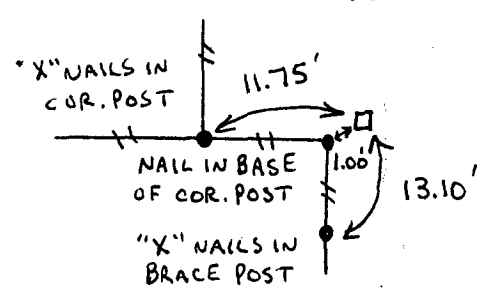
(Show a minimum of three reference ties to durable physical objects, relevant monuments and physical conditions that will enable recovery of the corner.)

NW cor.  
 SW. 1/4 NW. 1/4  
 Sec. 22-74-26  
 Set CIR #6808

WEST 1/4 COR.  
 Sec. 22-74-26  
 Set C.I.R. #6808



NE cor.  
 SE. 1/4 NW. 1/4  
 Sec. 22-74-26  
 Fd. Stone



I hereby certify that this land surveying document was prepared and the related survey work was performed by me or under my direct personal supervision and that I am a duly licensed Land Surveyor under the laws of the State of Iowa.  
J.M. Hochstetler  
 License number 6808 Date 4/28/97  
 My license renewal date is December 31, 1997.  
 Pages or sheets covered by this seal: \_\_\_\_\_

List Corners to be Indexed			
Corners	Section	Twp	Range
NW Cor. SW 1/4 NW 1/4	22	T74N	R26W
W 1/4 Cor.	22	T74N	R26W
NE Cor. SE 1/4 NW 1/4	22	T74N	R26W