

COMPUTER   
RECORDED   
COMPARED

FILED NO: 2884

BOOK 1 PAGE 472

97 APR 21 PM 4:10

REV: 5.00

REV: 1.00

R.M.F. \$ 1.00

MICHELLE UTSLER  
RECORDER

MADISON COUNTY IOWA  
50275, Tel. (515) 462-2166

Prepared By: J. Brian Morrissey, Morrissey Surveying, 1926 Pammel Park Road, Winterset, Ia. 50275

# UNITED STATES PUBLIC LAND SURVEY CORNER CERTIFICATE OF

Land Survey Monuments situated in Section 23, Township 75 N, Range 27 W, of the Fifth Principal Meridian, Madison County, Iowa.  
Previously recorded in N.A. in County Recorders Office.

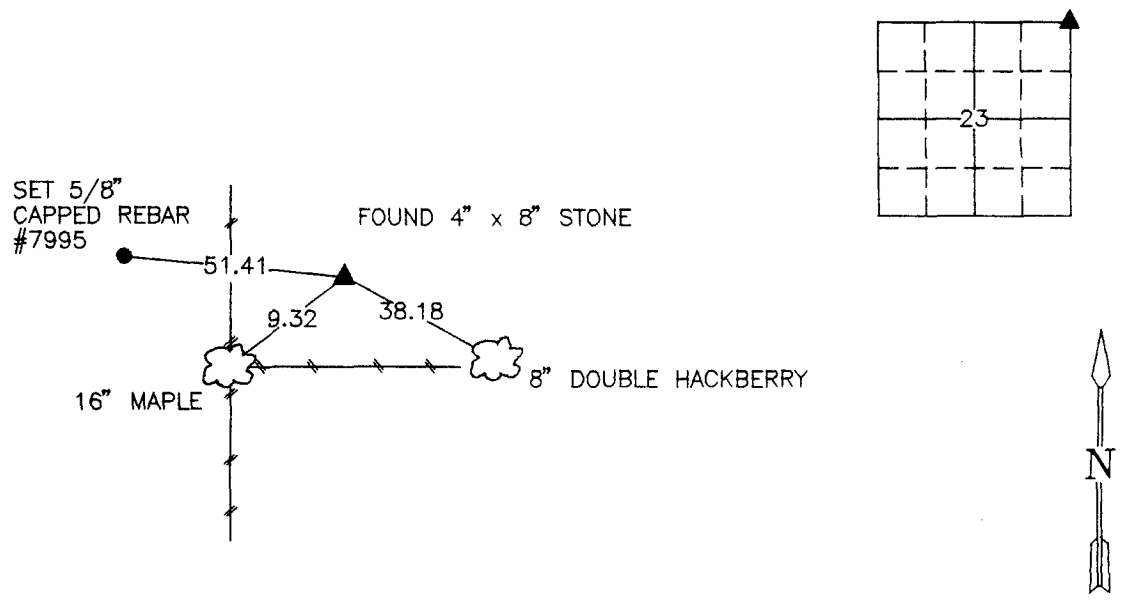
(book, page, document number, etc.)

(Show reason for preparing this certificate, the evidence and detailed procedures used in establishing the corner positions and monumentation found or placed.)

Monument Description and Remarks: FOUND 4" x 8" EXPOSED LIMESTONE, 1/2" BOLT ON EAST SIDE, ACCEPTED POSITION.

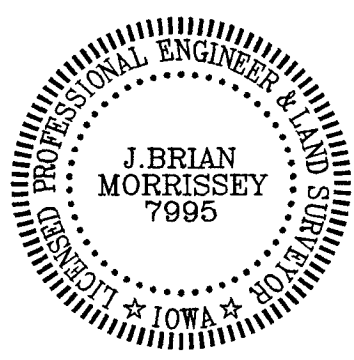
## PLAN VIEW

(Show a minimum of three reference ties to durable physical objects, relevant monuments and physical conditions that will enable recovery of the corner.)



NE. COR., NE. 1/4, SEC. 23

NOTE: ALL TIES TO "X" NAILS UNLESS NOTED



I hereby certify that the survey work was completed and this certificate was prepared by me or under my direct personal supervision and that I am a duly licensed Land Surveyor under the laws of the State of Iowa.

Signature: J. Brian Morrissey Date: 4/18/97  
J. Brian Morrissey

License number 7995.  
My license renewal date is December 31, 1997.