

INDEXED ✓
 RECORDED ✓
 COMPARED ✓

SLSI 7-90

FILED NO. **180**

REC: *S. 00*
 AUD: _____
 B.M. # *L. 00*

BOOK 1 PAGE 487

97 JUL 14 PM 4: 29

MICHELLE UTSELL
 RECORDER
 MADISON COUNTY, IOWA

STUMBO AND ASSOCIATES LAND SURVEYING, INC. P.O. BOX 1664 AMES, IOWA 50010 Ph#515-233-3689

UNITED STATES PUBLIC LAND SURVEY CORNER CERTIFICATE OF

Land Survey Monuments situated in Section 22, Township 77 North, Range 27 West of the Fifth Principal Meridian, Madison County, Iowa.

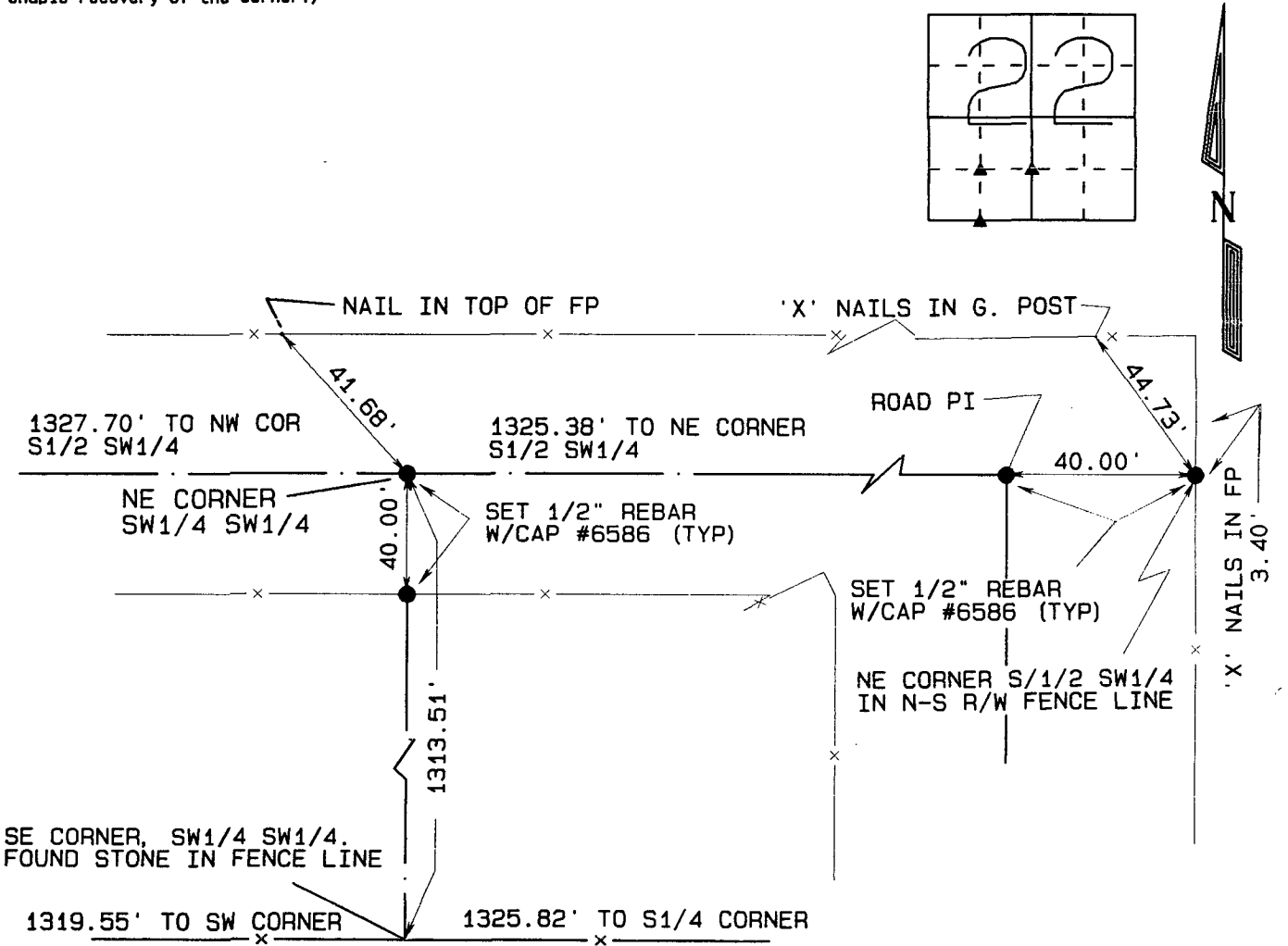
Previously recorded NA
(BOOK, PAGE / INST. NO. / CABINET, SLIDE)

(Show reason for preparing this certificate, the evidence and detailed procedures used in establishing the corner positions and monumentation found or placed.)

Monument Description and Remarks: SEE BELOW

PLAN - VIEW

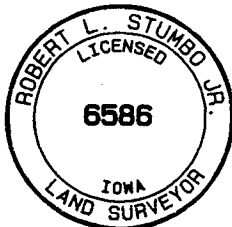
(Show a minimum of three reference ties to durable physical objects, relevant monuments and physical conditions that will enable recovery of the corner.)



Certification: I hereby certify that this land surveying document was prepared and the related survey work was performed by me or under my direct personal supervision and that I am a duly licensed Land Surveyor under the laws of the State of Iowa.

Robert L. Stumbo, Jr.
 Robert L. Stumbo, Jr. License #6586
 My license renewal date is December 31, 1998
 Date: 7-10-97

SEAL



List Corners to be Indexed

Corners	Section	Twp	Range
SE CORNER SW1/4 SW1/4	22	77	27
NE CORNER SW1/4 SW1/4	22	77	27
NE CORNER S1/2 SW1/4	22	77	27

JOB NO. 13658