

COMPUTER
RECORDED
COMPARED

SLSI-7-90 **179**

FILED NO. _____
BOOK 1 PAGE 486
97 JUL 14 PM 4:27
MICHELLE UTSLER
RECORDER
MADISON COUNTY, IOWA

REC \$ 5.00
AUD \$ _____
R.M.F. \$ 1.00

STUMBO AND ASSOCIATES LAND SURVEYING, INC. P.O. BOX 1664 AMES, IOWA 50010 Ph#515-233-3689

UNITED STATES PUBLIC LAND SURVEY CORNER CERTIFICATE OF

Land Survey Monuments situated in Section 22, Township 77 North, Range 27 West of the Fifth Principal Meridian, Madison County, Iowa.

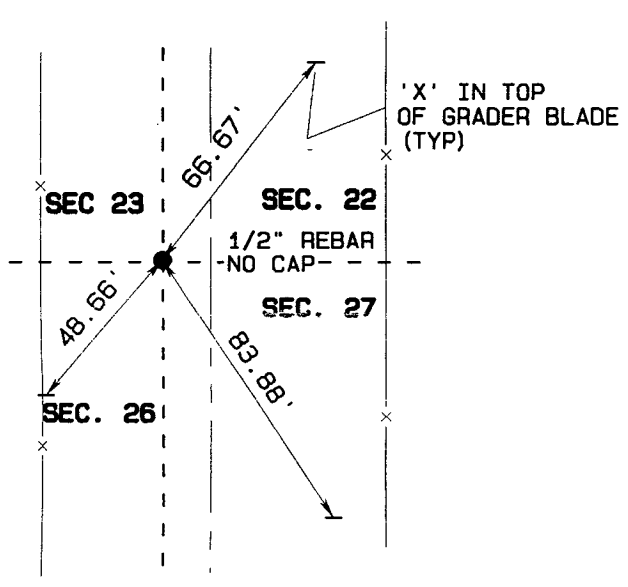
Previously recorded N/A
(BOOK, PAGE / INST. NO. / CABINET, SLIDE)

(Show reason for preparing this certificate, the evidence and detailed procedures used in establishing the corner positions and monumentation found or placed.)

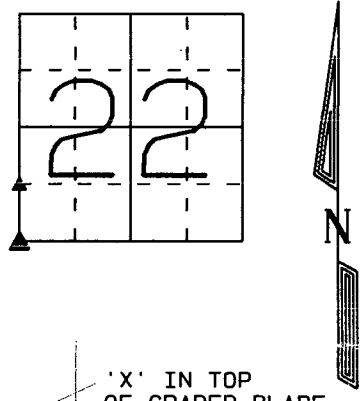
Monument Description and Remarks: FOUND THESE POINTS USING EXISTING EVIDENCE AND COUNTY REFERENCES. MONUMENTS WERE IN GOOD CONDITION.

PLAN - VIEW

(Show a minimum of three reference ties to durable physical objects, relevant monuments and physical conditions that will enable recovery of the corner.)



SW CORNER
SECTION 22-77-27
FOUND 1/2" REBAR
8' WEST OF CENTER
OF ROAD.

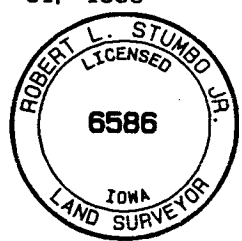


NW CORNER
S1/2 SW1/4
SECTION 22-77-27
FOUND 1/2" REBAR
IN CENTER OF INTERSECTION.

Certification: I hereby certify that this land surveying document was prepared and the related survey work was performed by me or under my direct personal supervision and that I am a duly licensed Land Surveyor under the laws of the State of Iowa.

Robert L. Stumbo, Jr.
Robert L. Stumbo, Jr. License #6586
Date: 7-9-97
My license renewal date is December 31, 1998

SEAL



List Corners to be Indexed

Corners	Section	Twp	Range
SW CORNER	22	77	27
NW CORNER S1/2 SW1/4	22	77	27

JOB NO. 13658