

COMPUTER RECORDED COMPARED

FILED NO. 2608

BOOK 1 PAGE 464

97 MAR 28 PM 4: 22

MICHELLE UTSLER RECORDER MADISON COUNTY, IOWA

REG. \$ 5.00
F.C.S.
R.M.F. \$ 1.00

VANCE & HOCHSTETLER, P.C. CONSULTING ENGINEERS, WINTERSSET, IOWA (515)462-399.

CHARLES T. VANCE, 110 West Green St., Winterset, Iowa 50273
JAMES M. HOCHSTETLER, 110 West Green St., Winterset, Iowa 50273

SLS19-94

UNITED STATES PUBLIC LAND SURVEY CORNER CERTIFICATE

OF

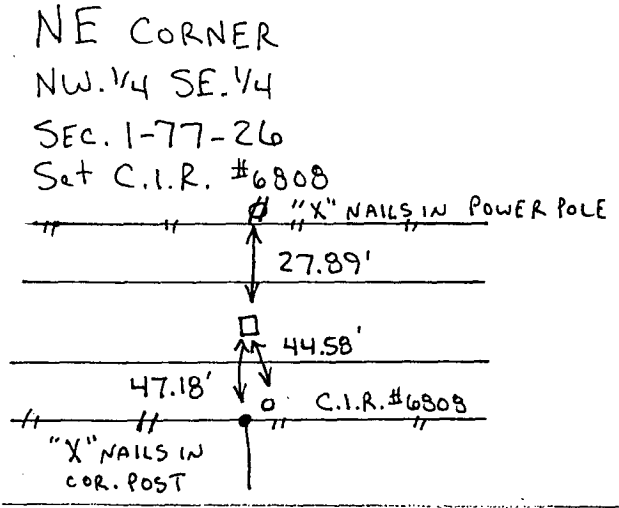
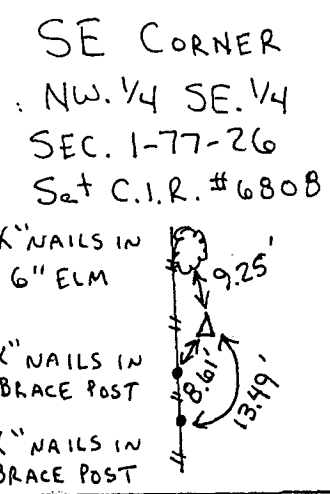
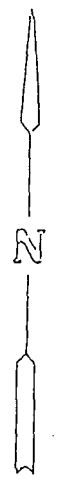
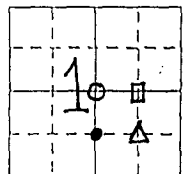
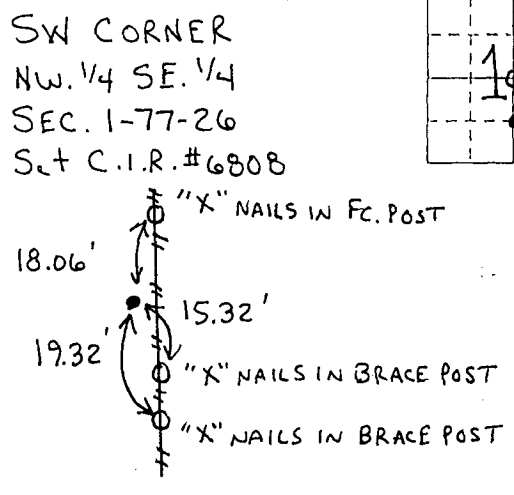
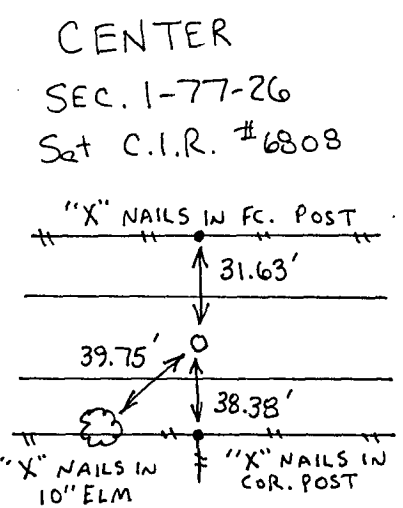
Land Survey Monuments situated in Section 1, Township 77 North, Range 26 West, of the Fifth Principal Meridian, Madison County, Iowa. Previously recorded in _____ in County Recorder's Office.

(Show reason for preparing this certificate, the evidence and detailed procedures used in establishing the corner positions and monumentation found or placed.)

Monument Description and Remarks:
CENTER - Set C.I.R. #6808 at split on line between E. 1/4 cor. & W. 1/4 cor.
SW cor. NW. 1/4 SE. 1/4 - Set C.I.R. #6808 at split of W. line of SE. 1/4
SE cor. NW. 1/4 SE. 1/4 - Set C.I.R. #6808 at center of SE. 1/4
NE cor. NW. 1/4 SE. 1/4 - Set C.I.R. #6808 on line between 1/4 corners (E. & W.)
in line with property line fence to the South.

PLAN - VIEW

(Show a minimum of three reference ties to durable physical objects, relevant monuments and physical conditions that will enable recovery of the corner.)



I hereby certify that this land surveying document was prepared and the related survey work was performed by me or under my direct personal supervision and that I am a duly licensed Land Surveyor under the laws of the State of Iowa.
J.M. Hochstetler
J.M. HOCHSTETLER
License number 6808 Date 3/17/97
My license renewal date is December 31, 1997.
Pages or sheets covered by this seal: 1

List Corners to be Indexed

Corners	Section	Twp	Range
CENTER	1	77N	26W
SW cor. NW. 1/4 SE. 1/4	1	77N	26W
SE cor. NW. 1/4 SE. 1/4	1	77N	26W
NE cor. NW. 1/4 SE. 1/4	1	77N	26W