

COMPUTER
 RECORDED
 COMPARED

FILED NO. **2461**
 BOOK 1 PAGE 463
 97 MAR 18 AM 11:48
 MICHELLE UTSLER
 RECORDER
 MADISON COUNTY, IOWA

REC \$ 5.00
 A.D.S. _____
 R.M.F. \$ 1.00

J. Clifton Froman, L.S.#12068, Ryken Engineering, 8527 University Ave, #11, Des Moines, Ia. 50325 515/267-0459

UNITED STATES PUBLIC LAND CORNER CERTIFICATE OF

Land Survey Monuments situated in Section 34, Township 77N, Range 27W, of the Fifth Principal Meridian, WARREN County, Iowa, Previously recorded in _____ in County Recorder's Office

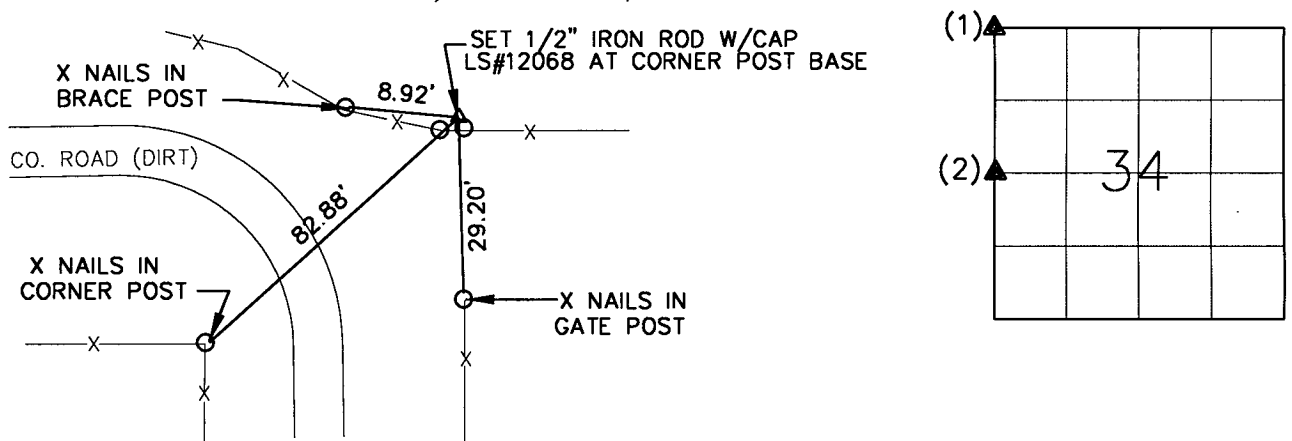
(Show reason for preparing this certificate, the evidence and detailed procedures used in establishing the corner positions and monumentation found or placed.)

Monument Description and Remarks: (1) NORTHWEST CORNER- SET 1/2" IRON ROD WITH PLASTIC SURVEYOR'S CAP-LS#12068 AT BASE OF FENCE CORNER POST

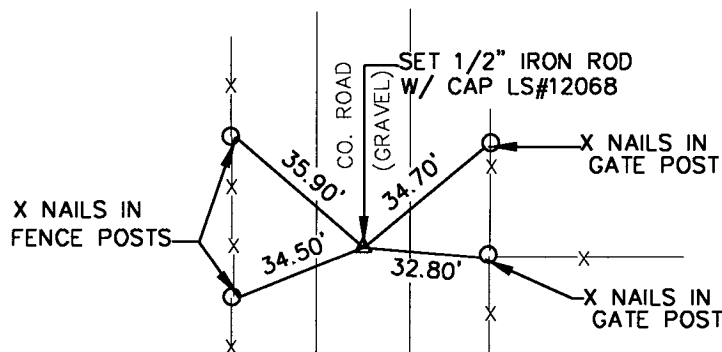
(2) SET 1/2" IRON ROD WITH PLASTIC SURVEYOR'S CAP- LS#12068 AT SPLIT OF ROAD RIGHT-OF-WAY IN LINE WITH 1/2 SECTION LINE FENCE EQUADISTANT FROM (1) AND FOUND STONE AT SW CORNER SECTION 34 (FROM EXISTING CORNER RECORD).

PLAN VIEW

(Show a minimum of three reference ties to durable physical objects, relevant monuments, and physical conditions that will enable recovery of the corner.)



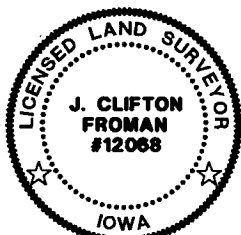
(1) NORTHWEST CORNER SECTION 34-T77N-R27W



(2) WEST 1/4 CORNER SECTION 34-T77N-R27W

I hereby certify that this land surveying document was prepared and the related survey work was performed by me or under my direct personal supervision and that I am a duly licensed Land Surveyor under the laws of the State of Iowa.

J. Clifton Froman
 J. CLIFTON FROMAN, L.S.
 Date: 3/18/97 License number: 12068
 My license renewal date is December 31, 1998



Corners	List Corners to be Indexed		
	Section	Twp	Range
NW	34	77N	27W
WEST 1/4	34	77N	27W