

REC \$ 5.00

AUD \$

R.M.F. \$ 1.00

FILED NO: 2182

BOOK 1 PAGE 459

97 FEB 14 PM 3:49

COMPUTER
RECORDED
COMPARED

MICHELLE UTSLER
RECORDER
MADISON COUNTY, IOWA

VANCE & HOCHSTETLER, P.C. CONSULTING ENGINEERS, WINTERSSET, IOWA (515)462-3991

CHARLES T. VANCE, 110 West Green St., Winterset, Iowa 50273
JAMES M. HOCHSTETLER, 110 West Green St., Winterset, Iowa 50273

SLSI 9-94

UNITED STATES PUBLIC LAND SURVEY CORNER CERTIFICATE

OF

Land Survey Monuments situated in Section 15, Township 77 North, Range 26 West, of the Fifth Principal Meridian, Madison County, Iowa.
Previously recorded in _____ in County Recorder's Office.

(book, page, document number, etc.)

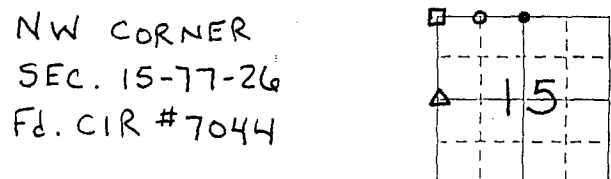
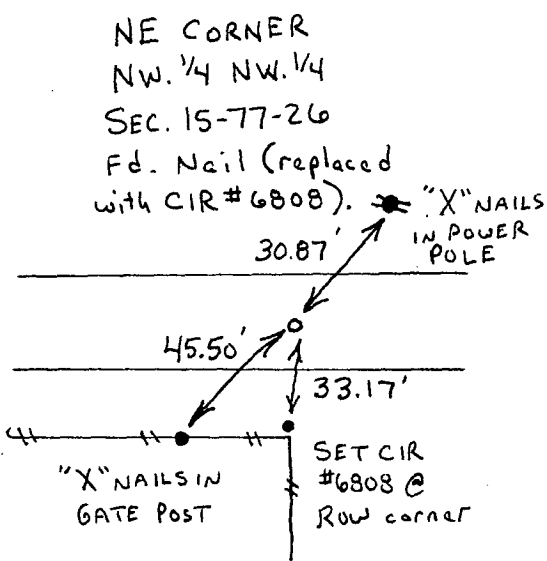
(Show reason for preparing this certificate, the evidence and detailed procedures used in establishing the corner positions and monumentation found or placed.)

Monument Description and Remarks:

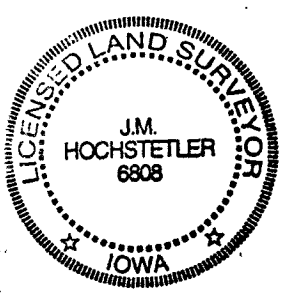
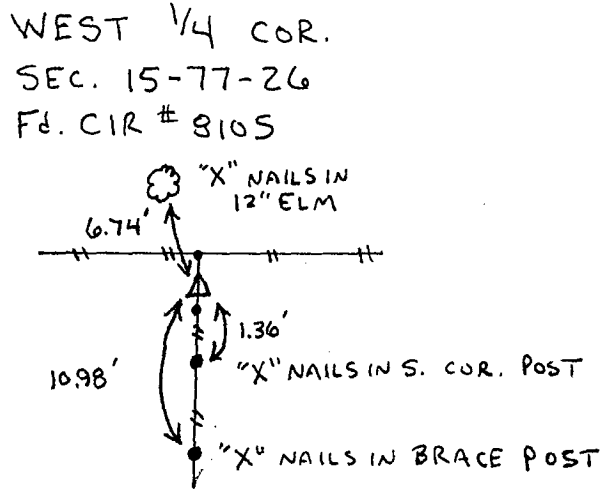
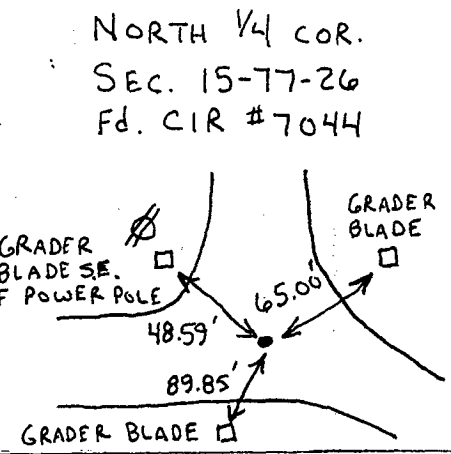
- NE cor NW. 1/4 NW. 1/4 - Fd. Nail @ Row split (replaced with CIR #6808)
- N. 1/4 cor. - Fd. CIR #7044
- NW cor. - Fd. CIR #7044
- W. 1/4 cor. - Fd. CIR #8105

PLAN - VIEW

(Show a minimum of three reference ties to durable physical objects, relevant monuments and physical conditions that will enable recovery of the corner.)



All ties are to "X"'s cut in tops of Grader Blades



I hereby certify that this land surveying document was prepared and the related survey work was performed by me or under my direct personal supervision and that I am a duly licensed Land Surveyor under the laws of the State of Iowa.

J.M. Hochstetler
J.M. HOCHSTETLER
 License number 6808 Date 2/11/97
 My license renewal date is December 31, 1997.
 Pages or sheets covered by this seal: 1

List Corners to be Indexed

Corners	Section	Twp	Range
NE cor.	15	77N	26W
NW. 1/4 NW. 1/4			
N. 1/4 cor.	15	77N	26W
NW cor.	15	77N	26W
W. 1/4 cor.	15	77N	26W