

REC \$ 300
A.M.F. \$ 100

STATE OF IOWA }
MADISON COUNTY } SS

2154

Filed for record the 13 day of Feb.
A. D. 19. 97 at 8:31 clock A.
Recorded in book 1 on page 457
Michelle Utsler
Betty M. Mibbs

COMPUTER
RECORDED
COMPARED

VANCE & HOCHSTETLER, P.C. CONSULTING ENGINEERS, WINTERSSET, IOWA (515) 462-3991

CHARLES T. VANCE, 110 West Green St., Winterset, Iowa 50273
JAMES M. HOCHSTETLER, 110 West Green St., Winterset, Iowa 50273

SLSI 9-94

UNITED STATES PUBLIC LAND SURVEY CORNER CERTIFICATE

OF

Land Survey Monuments situated in Section 18, Township 75 North, Range
27 West, of the Fifth Principal Meridian, Madison County, Iowa.
Previously recorded in _____ in County Recorder's Office.
(book, page, document number, etc.)

(Show reason for preparing this certificate, the evidence and detailed procedures used in establishing the corner positions and monumentation found or placed.)

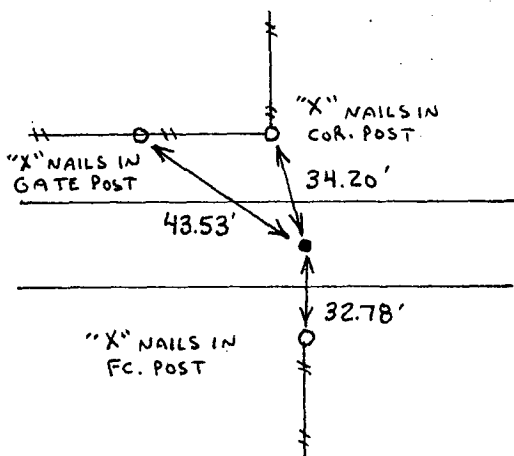
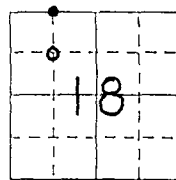
Monument Description and Remarks:

NW cor. NE. 1/4 NW. 1/4 - Set C.I.R. #6808 at R.O.W. split at platted distance from
NW cor of section (from R.O.W. documents)
SW cor. NE. 1/4 NW. 1/4 - Set C.I.R. #6808

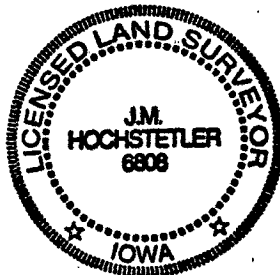
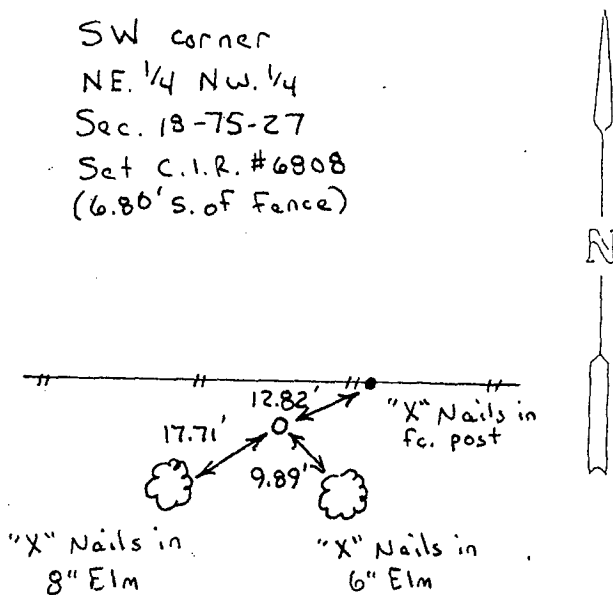
PLAN - VIEW

(Show a minimum of three reference ties to durable physical objects, relevant monuments and physical conditions that will enable recovery of the corner.)

NW corner
NE. 1/4 NW. 1/4
Sec. 18-75-27
Set C.I.R. #6808



SW corner
NE. 1/4 NW. 1/4
Sec. 18-75-27
Set C.I.R. #6808
(6.86' S. of Fence)



I hereby certify that this land surveying document was prepared and the related survey work was performed by me or under my direct personal supervision and that I am a duly licensed Land Surveyor under the laws of the State of Iowa.

J. M. Hochstetler
J.M. HOCHSTETLER
License number 6808
Date 2/3/97
My license renewal date is December 31, 1997
Pages or sheets covered by this seal: 1

List Corners to be Indexed

Corners	Section	Twp	Range
NW cor.	18	75N	27W
NE. 1/4 NW. 1/4			
SW cor.	18	75N	27W
NE. 1/4 NW. 1/4			