

COMPUTER   
RECORD   
INDEXED

FILED NO. **1977**

BOOK 1 PAGE 455

97 JAN 24 AM 8:09

REC 502  
AUD         
R.M.F.       

MICHELLE UTSLER  
RECORDER  
MADISON COUNTY, IOWA

VANCE & HOCHSTETLER, P.C. CONSULTING ENGINEERS, WINTERSSET, IOWA (515)462-3995

CHARLES T. VANCE, 110 West Green St., Winterset, Iowa 50273  
JAMES M. HOCHSTETLER, 110 West Green St., Winterset, Iowa 50273

SLSI 9-94

UNITED STATES PUBLIC LAND SURVEY CORNER CERTIFICATE

OF

Land Survey Monuments situated in Section 13, Township 74 North, Range 26 West, of the Fifth Principal Meridian, Madison County, Iowa. Previously recorded in \_\_\_\_\_ in County Recorder's Office.

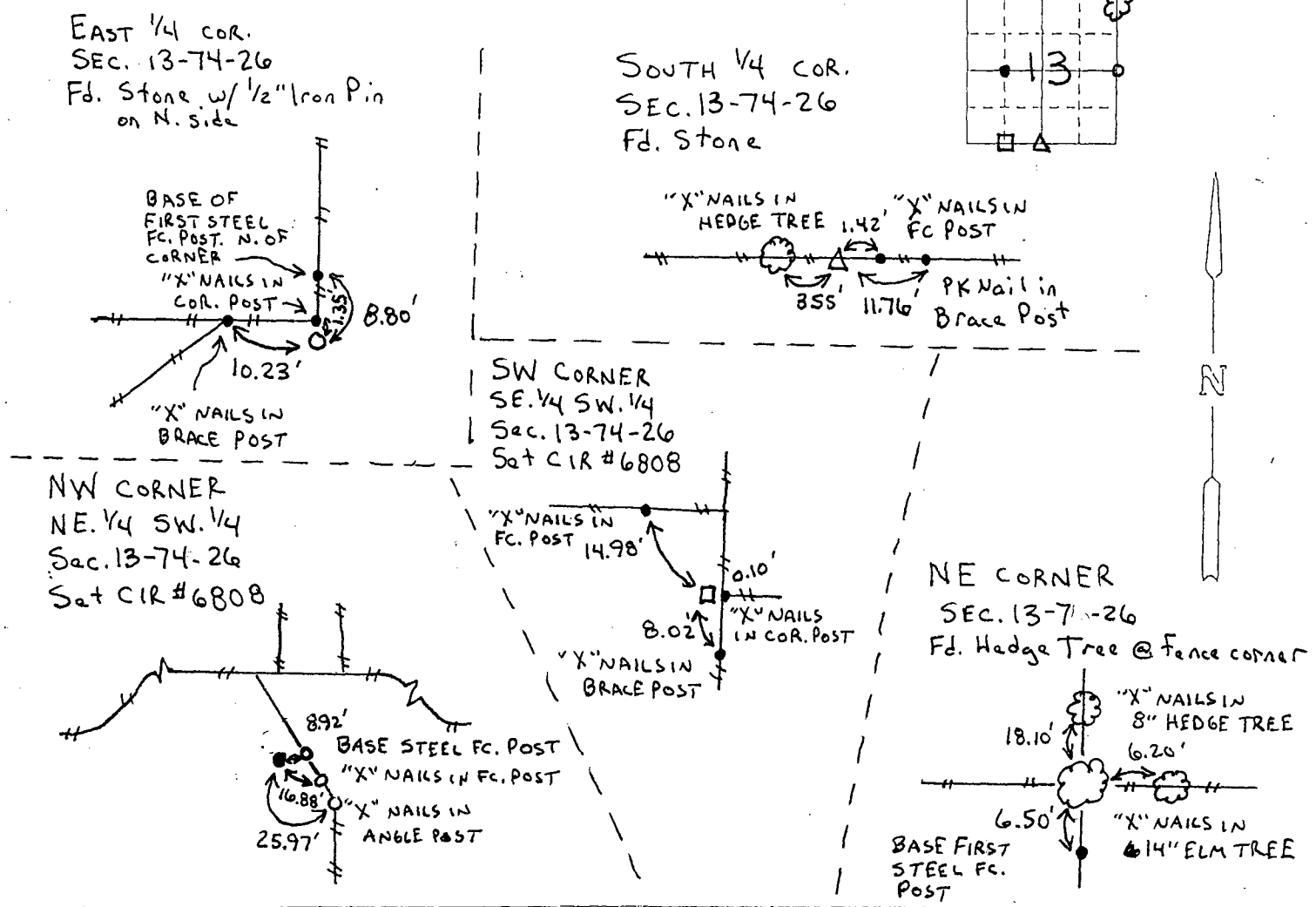
(book, page, document number, etc.)

(Show reason for preparing this certificate, the evidence and detailed procedures used in establishing the corner positions and monumentation found or placed.)

Monument Description and Remarks:  
E. 1/4 cor. - Fd. Stone w/ 1/2" Iron pin on N. side  
S. 1/4 cor. - Fd. Stone  
NW cor. NE. 1/4 SW. 1/4 - Set CIR #6808  
SW cor. SE. 1/4 SW. 1/4 - Set CIR #6808  
NE cor. - Fd. hedge tree @ 4-way fence corner (per I.D.O.T. ties)

PLAN - VIEW

(Show a minimum of three reference ties to durable physical objects, relevant monuments and physical conditions that will enable recovery of the corner.)



I hereby certify that this land surveying document was prepared and the related survey work was performed by me or under my direct personal supervision and that I am a duly licensed Land Surveyor under the laws of the State of Iowa.

J.M. Hochstetler  
J.M. HOCHSTETLER  
License number 6808 Date 1/13/97  
My license renewal date is December 31, 1997.  
Pages or sheets covered by this seal: 1

List Corners to be Indexed

Corners	Section	TWP	Range
E. 1/4 cor.	13	74N	26W
S. 1/4 cor.	13	74N	26W
NW cor.	13	74N	26W
NE. 1/4 SW. 1/4	13	74N	26W
SW cor.	13	74N	26W
SE. 1/4 SW. 1/4	13	74N	26W
NE cor.	13	74N	26W