

COMPUTER ✓
INDEXED ✓
FILED ✓

FILED NO. **1976**

BOOK 1 PAGE 454

97 JAN 24 AM 8:08

REC 502

AUC

R.M.F. 10

MICHELLE UTSLER
RECORDER
MADISON COUNTY, IOWA

VANCE & HOCHSTETLER, P.C. CONSULTING ENGINEERS, WINTERSSET, IOWA (515)462-399

CHARLES T. VANCE, 110 West Green St., Winterset, Iowa 50273

JAMES M. HOCHSTETLER, 110 West Green St., Winterset, Iowa 50273

SLSI 9-94

UNITED STATES PUBLIC LAND SURVEY CORNER CERTIFICATE

OF

Land Survey Monuments situated in Section 24, Township 74 North, Range 26 West, of the Fifth Principal Meridian, Madison County, Iowa. Previously recorded in _____ in County Recorder's Office.

(book, page, document number, etc.)

(Show reason for preparing this certificate, the evidence and detailed procedures used in establishing the corner positions and monumentation found or placed.)

Monument Description and Remarks:

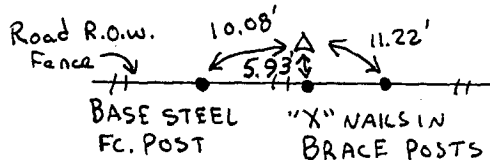
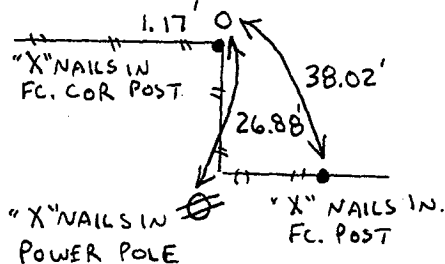
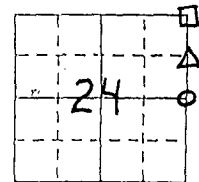
E. 1/4 cor. - Fd. Concrete Monument (1" Exposed)
NE cor. SE. 1/4 NE. 1/4 - Set CIR #6808 @ split of E. line of NE. 1/4
NE cor. - Fd. Concrete Monument

PLAN - VIEW

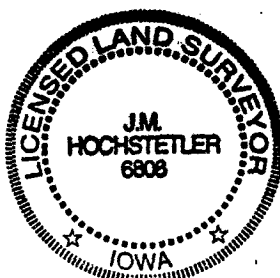
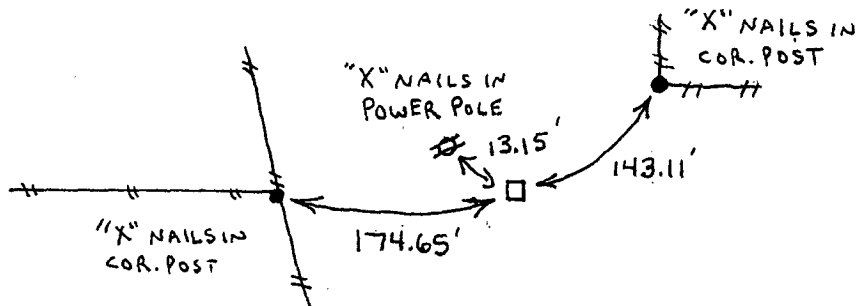
(Show a minimum of three reference ties to durable physical objects, relevant monuments and physical conditions that will enable recovery of the corner.)

EAST 1/4 COR.
SEC. 24-74-26
Fd. Conc. Monument
(Exposed 1")

NE CORNER
SE. 1/4 NE. 1/4
SEC. 24-74-26
Set CIR #6808



NE CORNER
SEC. 24-74-26
Fd. Conc. Monument
(15" deep)



I hereby certify that this land surveying document was prepared and the related survey work was performed by me or under my direct personal supervision and that I am a duly licensed Land Surveyor under the laws of the State of Iowa.

J.M. Hochstetler
J.M. HOCHSTETLER
License number 6808 Date 11/3/97
My license renewal date is December 31, 1997.
Pages or sheets covered by this seal: 1

List Corners to be Indexed

Corners	Section	Twp	Range
E. 1/4 cor.	24	74N	26W
NE cor. SE. 1/4 NE. 1/4	24	74N	26W
NE cor.	24	74N	26W