

REC \$ No Fee

A.M.S. _____

R.M.F. \$ _____

FILED NO. 2741

BOOK 1 PAGE 468

97 APR -9 PM 3:07

COMPUTER
RECORDED
COMPARED

MICHELLE UTSELL
RECORDER
MADISON COUNTY, IOWA

Prepared By: J. Brian Morrissey, Madison Co. Engineer, P.O. Box 152 Winterset, IA 50273, Telephone (515)462-1136

UNITED STATES PUBLIC LAND SURVEY CORNER CERTIFICATE OF

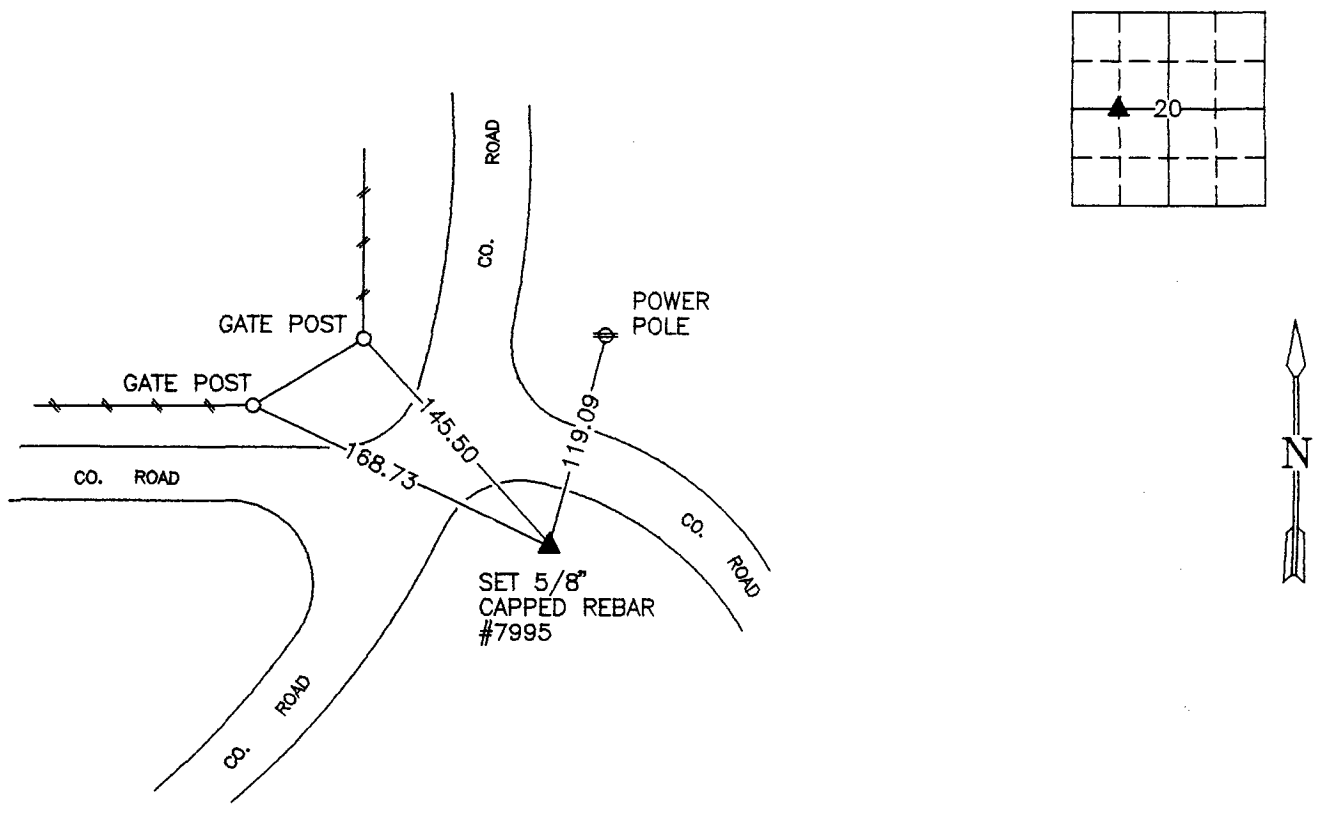
Land Survey Monuments situated in Section 20, Township 76 N, Range 27 W, of the Fifth Principal Meridian, Madison County, Iowa. Previously recorded in BOOK 1, PAGE 181, FILED NO. 724 in County Recorders Office.
(book, page, document number, etc.)

(Show reason for preparing this certificate, the evidence and detailed procedures used in establishing the corner positions and monumentation found or placed.)

Monument Description and Remarks: FOUND 1/2" REBAR DISTURBED (LAYING FLAT & BENT); PREVIOUSLY RECORDED SECTION CORNER TIES DID NOT CONFIRM THE LOCATION OF THE FOUND 1/2" DISTURBED REBAR. SET 5/8" CAPPED REBAR, #7995; POSITION VERIFIED FROM THE NW. COR., SE. 1/4, NW. 1/4, SEC. 20 AND PREVIOUSLY RECORDED SECTION CORNER TIES.

PLAN VIEW

(Show a minimum of three reference ties to durable physical objects, relevant monuments and physical conditions that will enable recovery of the corner.)



NE. COR., NW. 1/4, SW. 1/4, SEC. 20

NOTE: ALL TIES TO "X" NAILS UNLESS NOTED



I hereby certify that the survey work was completed and this certificate was prepared by me or under my direct personal supervision and that I am a duly licensed Land Surveyor under the laws of the State of Iowa.

Signature: J. Brian Morrissey Date: 4/8/97
J. Brian Morrissey

License number 7995.
My license renewal date is December 31, 1997.