

COMPUTER
RECORDED
COMPALED

FILED NO. **1748**

BOOK 1 PAGE 448

96 DEC 26 PM 3: 35

MICHELLE UTSLER
RECORDER
MADISON COUNTY, IOWA

REC \$ 5.00

AUD \$ 1.00

R.M.F. \$ 1.00

VANCE & HOCHSTETLER, P.C. CONSULTING ENGINEERS, WINTERSSET, IOWA (515)462-3995

CHARLES T. VANCE, 110 West Green St., Winterset, Iowa 50273

JAMES M. HOCHSTETLER, 110 West Green St., Winterset, Iowa 50273

SLSI 9-94

UNITED STATES PUBLIC LAND SURVEY CORNER CERTIFICATE

OF

Land Survey Monuments situated in Section 4, Township 77 N, Range 26 W, of the Fifth Principal Meridian, MADISON County, Iowa. Previously recorded in _____ in County Recorder's Office.

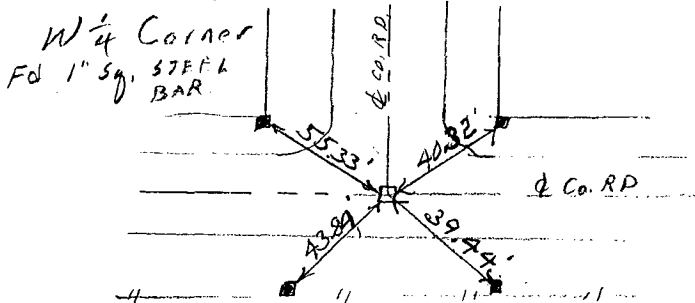
(book, page, document number, etc.)

(Show reason for preparing this certificate, the evidence and detailed procedures used in establishing the corner positions and monumentation found or placed.)

Monument Description and Remarks: W 1/4 Cor. - Found 1" Square Steel Bar 6" Below Surface of Road - Recorded in Co. Engr. Ties.
Center of Section 4 - Found 1/2" I.R. set by C.T. Vance for a Survey in 1978.
S 1/4 Cor. - Set CIR #6808 based on location of Center of Section and Road R.O.W. Split S. of Corner. Apparent jog in R.O.W. at S 1/4 Cor.

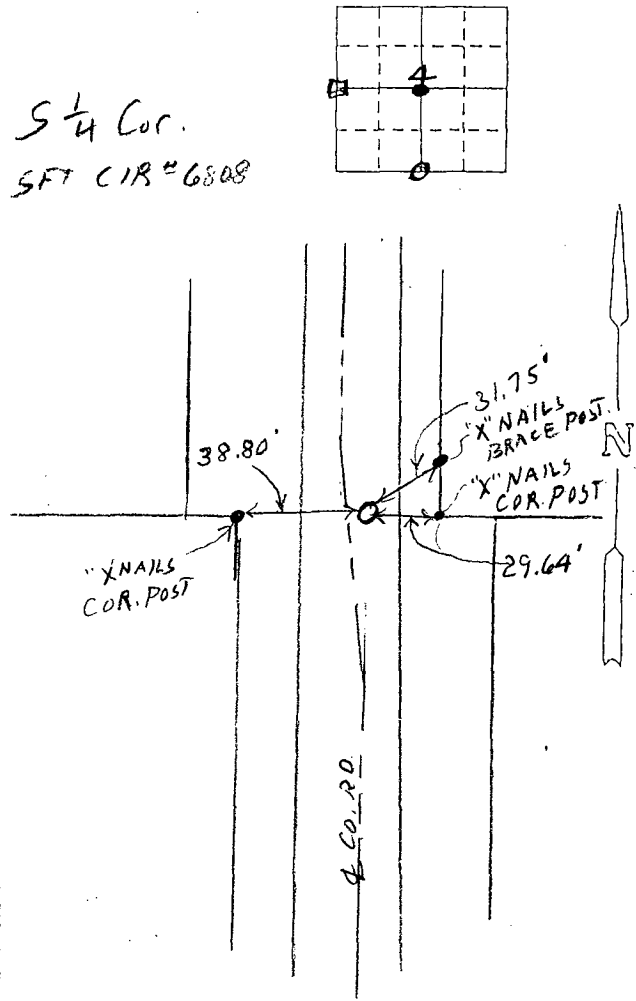
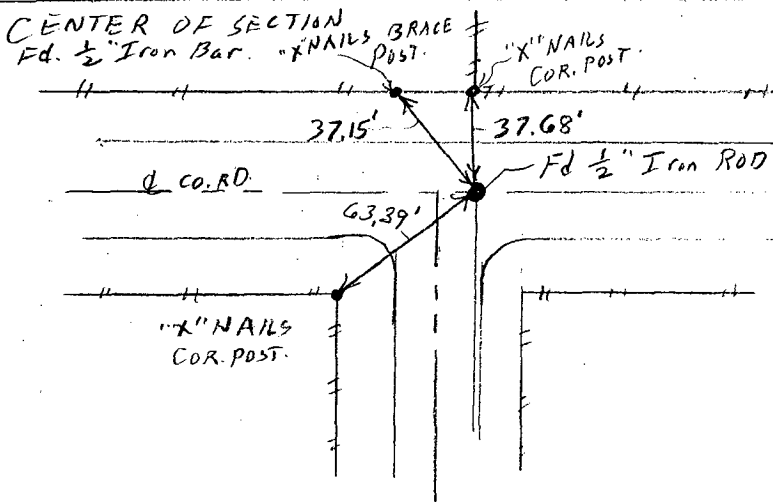
PLAN - VIEW

(Show a minimum of three reference ties to durable physical objects, relevant monuments and physical conditions that will enable recovery of the corner.)



All Ties to "X" IN TOP OF GRADE BLADES.

FOUND 1" SQUARE STEEL BAR 6" Below surface of Road.



I hereby certify that the survey work was completed and this land surveying document was prepared by me or under my direct personal supervision and that I am a duly registered land surveyor under the laws of the state of Iowa

Signature: J. M. Hochstetler
Name typed or printed: J. M. HOCHSTETLER

Date: 12/23/96 Reg. No. 6808

My registration renewal date is December 31, 1997



List Corners to be Indexed

Corners	Section	Twp	Range
W 1/4 Cor	4	77N	26W
CENTER	4	77N	26W
S 1/4 Cor.	4	77N.	26W

SEAL