

REC S. 500

AUC. 100

R.M.F. S. 100

FILED NO. 1325

BOOK 1 PAGE 428

96 NOV 13 PM 1:39

COMPUTER ✓

RECORDED ✓

COMPARED ✓

MICHELLE UTSLER
RECORDER
MADISON COUNTY, IOWA

RETURN TO: SNYDER & ASSOCIATES, INC. 501 SW ORALABOR ROAD., ANKENY, IOWA 50021 (515) 964-2020

UNITED STATES PUBLIC LAND SURVEY CORNER CERTIFICATE

OF

Land Survey Monuments situated in Section 10, Township 77N, Range 27W, of the Fifth Principal Meridian, MADISON, County, Iowa. Previously recorded in N.A. in County Recorder' Office.

(book, page, document number, etc.)

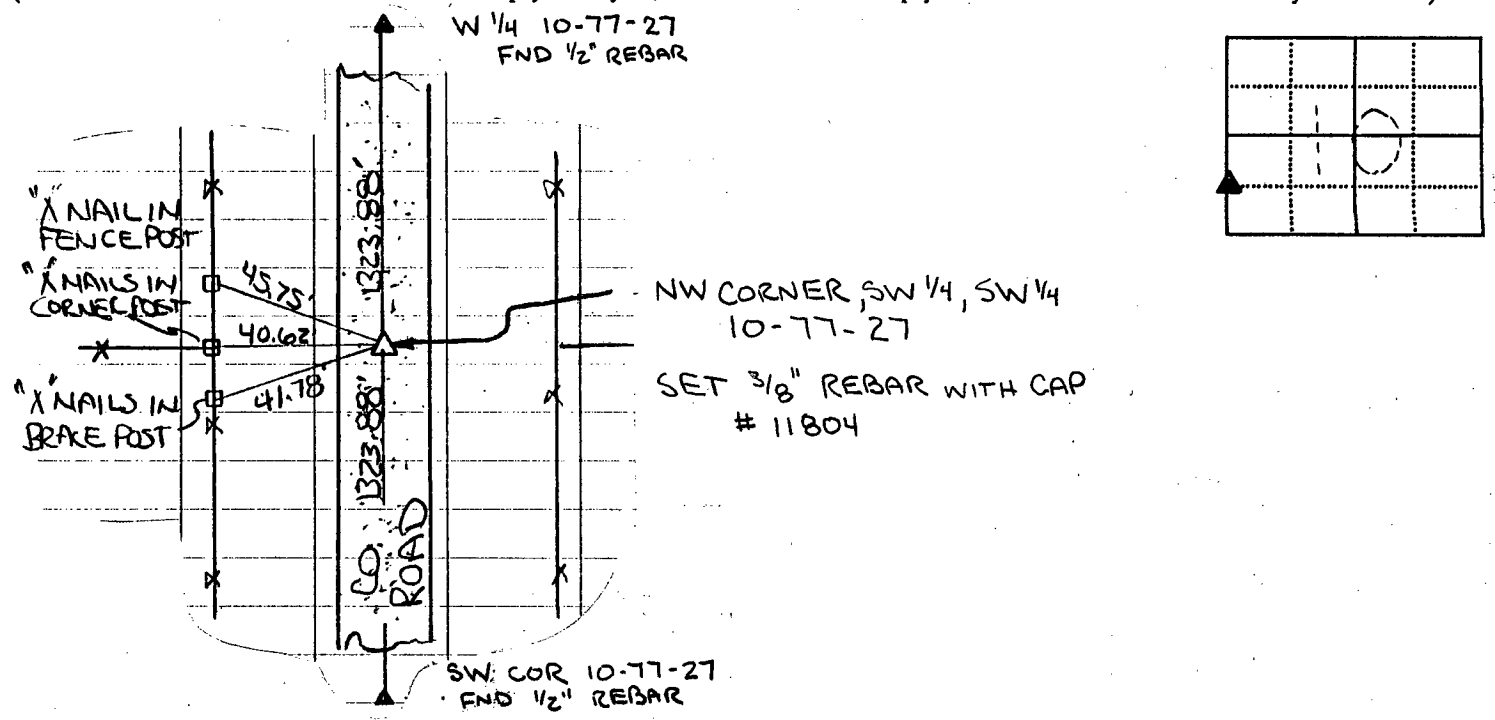
(Show reason for preparing this certificate, the evidence and detailed procedures used in establishing the corner positions and monumentation found or placed).

Monument Description and Remarks:

NW CORNER, SW 1/4, SW 1/4, 10-77-27: SET 3/8" REBAR WITH CAP # 11804 IN CENTERLINE COUNTY ROAD. NW CORNER LOCATION DETERMINED USING SINGLE PROPORTIONATE MEASUREMENT FROM THE W 1/4 TO THE SW CORNER OF 10-77-27.

PLAN VIEW

(Show a minimum of three reference ties to durable physical objects, relevant monuments and physical condition that will enable recovery of the corner).



I hereby certify that the survey work completed and this certificate was prepared by me or under my direct personal supervision and that I am a duly registered land surveyor under the laws of the State of Iowa.

Date

Michael G. Geier 11-11-96

Michael G. Geier, L.S., Iowa Reg. No. 11804



SEAL

Corners	List Corners to be indexed		
	Section	Twp.	Range
NW COR SW 1/4, SW 1/4	10	T 77N	R 27W