

REC \$ 5.00
 AUD \$ 1.00
 R.M.F. \$ 1.00

96-1655
 FILED NO. **1286**
 BOOK 1 PAGE 427
 96 NOV -7 PM 2:21
 MICHELLE UTSLER
 RECORDER
 MADISON COUNTY, IOWA

COMPUTER
 RECORDED
 COMPARED

VANCE & HOCHSTETLER, P.C. CONSULTING ENGINEERS, WINTERSSET, IOWA (515)462-3995

CHARLES T. VANCE, 110 West Green St., Winterset, Iowa 50273
 JAMES M. HOCHSTETLER, 110 West Green St., Winterset, Iowa 50273
 SLSI 9-94

UNITED STATES PUBLIC LAND SURVEY CORNER CERTIFICATE

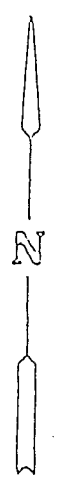
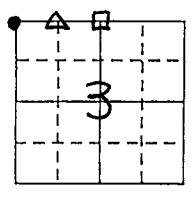
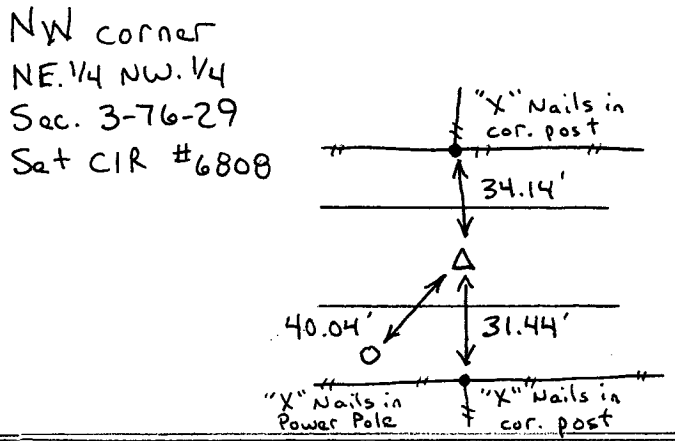
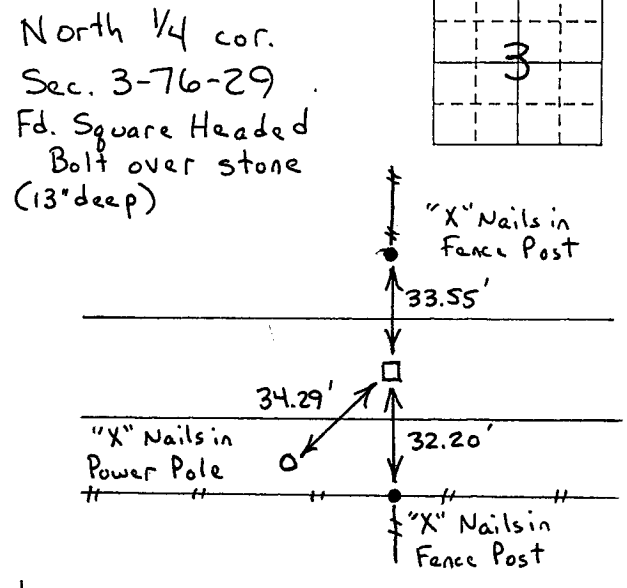
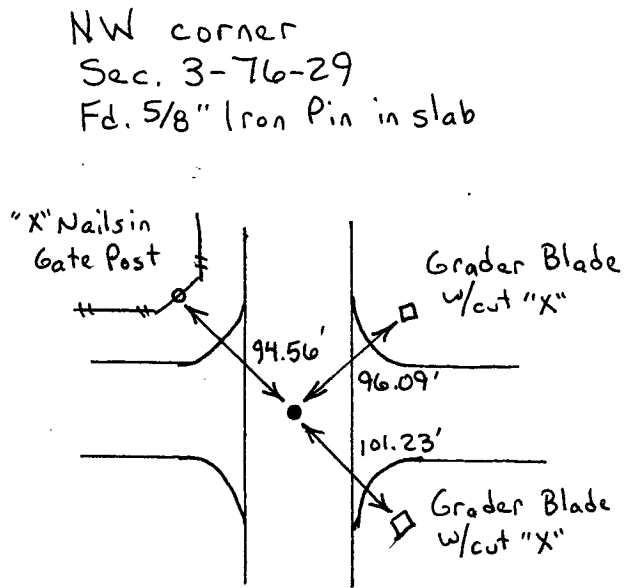
OF
 Land Survey Monuments situated in Section 3, Township 76 North, Range 29 West, of the Fifth Principal Meridian, Madison County, Iowa.
 Previously recorded in _____ in County Recorder's Office.
(book, page, document number, etc.)

(Show reason for preparing this certificate, the evidence and detailed procedures used in establishing the corner positions and monumentation found or placed.)

Monument Description and Remarks:
NW cor. - Fd. 5/8" Iron Pin in pavement
North 1/4 cor. - Fd. square headed bolt over stone
NW cor NE. 1/4 NW. 1/4 - Set CIR #6808

PLAN - VIEW

(Show a minimum of three reference ties to durable physical objects, relevant monuments and physical conditions that will enable recovery of the corner.)



I hereby certify that the survey work was completed and this land surveying document was prepared by me or under my direct personal supervision and that I am a duly registered land surveyor under the laws of the state of Iowa

Signature: J M Hochstetler
 Name typed or printed: _____

Date: 11/7/96 Reg. No. 6808

My registration renewal date is December 31, 1997



List Corners to be Indexed

Corners	Section	Twp	Range
NW cor.	3	76N	29W
N. 1/4 cor.	3	76 N	29 W
NW cor. NE. 1/4 NW. 1/4	3	76 N	29 W

SEAL