

REC \$ 500
AUD \$ _____
R.M.F. \$ 100

FILED NO. 1285
BOOK 1 PAGE 426
96 NOV -7 PM 2:20
MICHELLE UTSLER
RECORDER
MADISON COUNTY, IOWA

COMPUTER
RECORDED
COMPARED

VANCE & HOCHSTETLER, P.C. CONSULTING ENGINEERS, WINTERSSET, IOWA (515)462-3995

CHARLES T. VANCE, 110 West Green St., Winterset, Iowa 50273
JAMES M. HOCHSTETLER, 110 West Green St., Winterset, Iowa 50273

SLS19-94

UNITED STATES PUBLIC LAND SURVEY CORNER CERTIFICATE

OF

Land Survey Monuments situated in Section 35, Township 77 North, Range 29 West, of the Fifth Principal Meridian, MADISON County, Iowa. Previously recorded in _____ in County Recorder's Office.

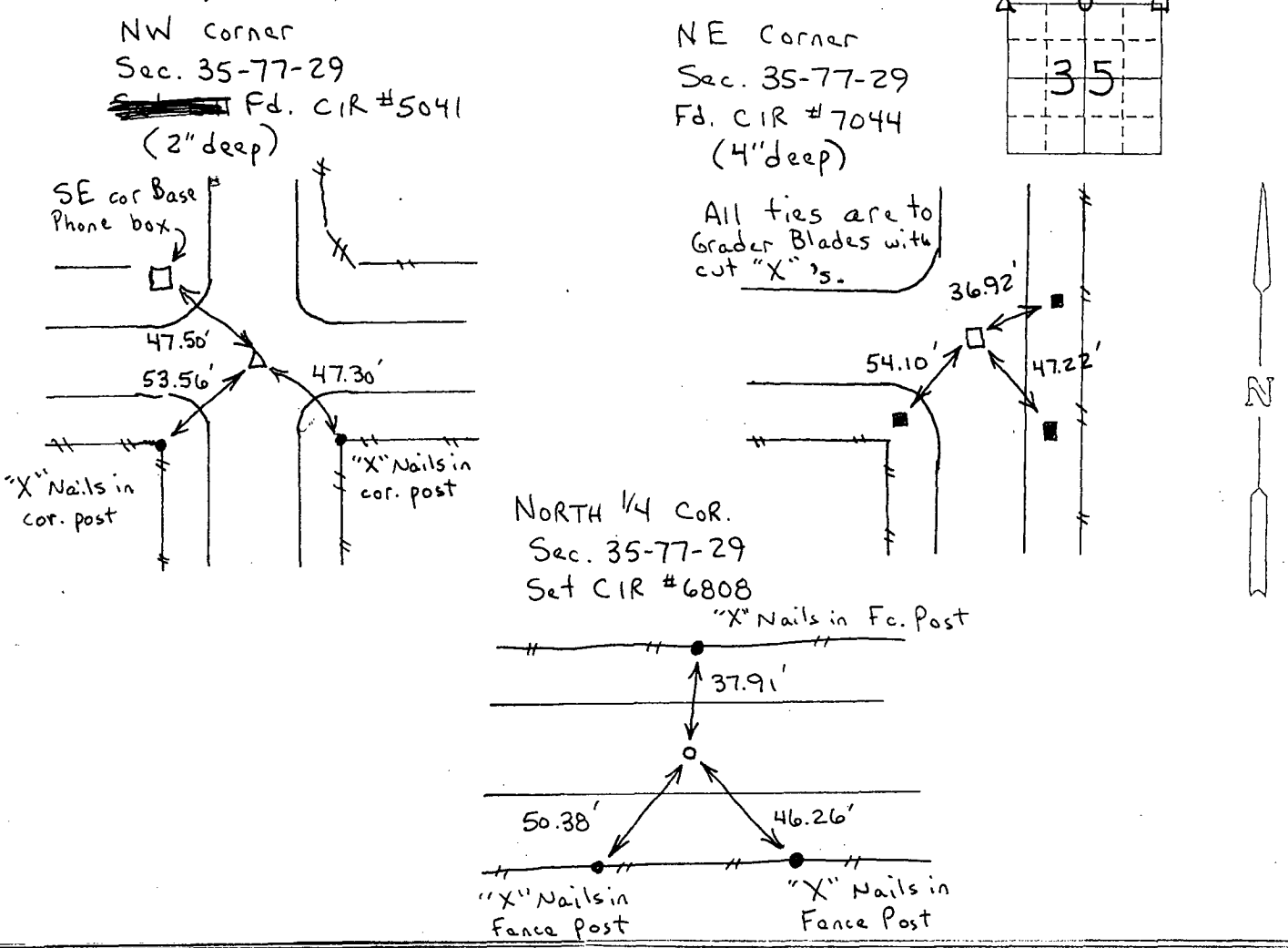
(book, page, document number, etc.)

(Show reason for preparing this certificate, the evidence and detailed procedures used in establishing the corner positions and monumentation found or placed.)

Monument Description and Remarks:
NW corner - Fd. CIR #5041 2" deep
NE corner - Fd. CIR #7044 4" deep
North 1/4 cor. - Set CIR #6808

PLAN - VIEW

(Show a minimum of three reference ties to durable physical objects, relevant monuments and physical conditions that will enable recovery of the corner.)



I hereby certify that the survey work was completed and this land surveying document was prepared by me or under my direct personal supervision and that I am a duly registered land surveyor under the laws of the state of Iowa

Signature: J. M. Hochstetler
Name typed or printed:

Date: 11/7/96 Reg. No. 6808

My registration renewal date is December 31, 1997

List Corners to be Indexed

Corners	Section	Twp	Range
NW cor.	35	77N	29W
NE cor.	35	77N	29W
N. 1/4 cor.	35	77N	29W

SEAL

