

COMPUTER   
 RECORDED   
 COMPARED

FILED NO. 847  
 BOOK 1 PAGE 410  
 96 SEP 23 PM 3:22

REC \$ 5.00  
 AUD \$       
 R.M.F. \$ 1.00

MICHELLE UTSLER  
 RECORDER  
 MADISON COUNTY, IOWA

**VANCE & HOCHSTETLER, P.C. CONSULTING ENGINEERS, WINTERSSET, IOWA (515)462-3995**

CHARLES T. VANCE, 110 West Green St., Winterset, Iowa 50273  
 JAMES M. HOCHSTETLER, 110 West Green St., Winterset, Iowa 50273  
 SLSI 9-94

**UNITED STATES PUBLIC LAND SURVEY CORNER CERTIFICATE**

OF

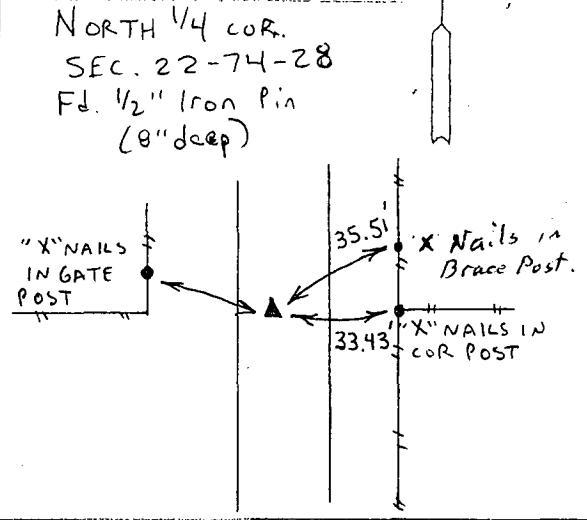
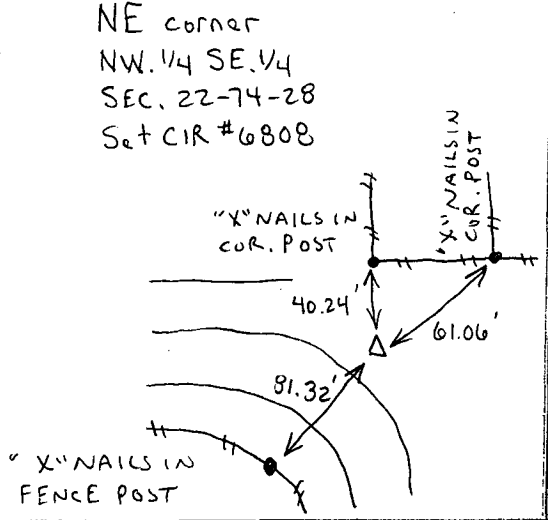
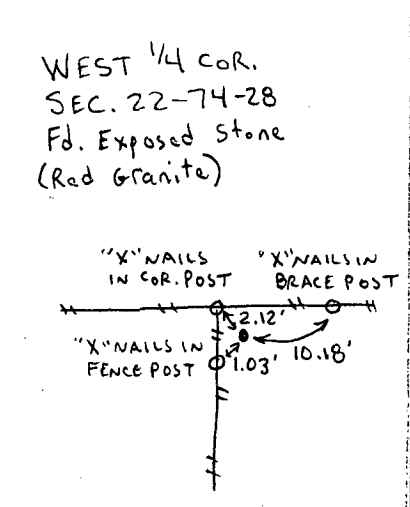
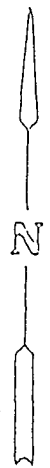
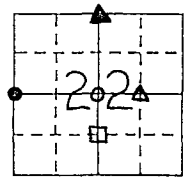
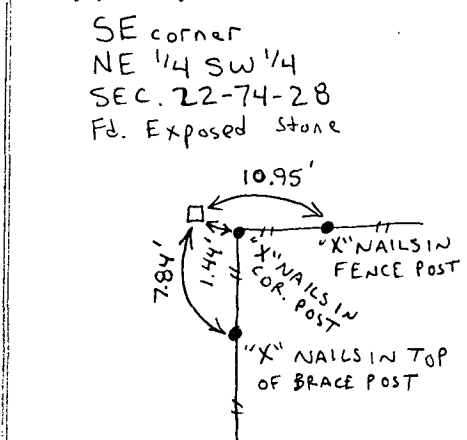
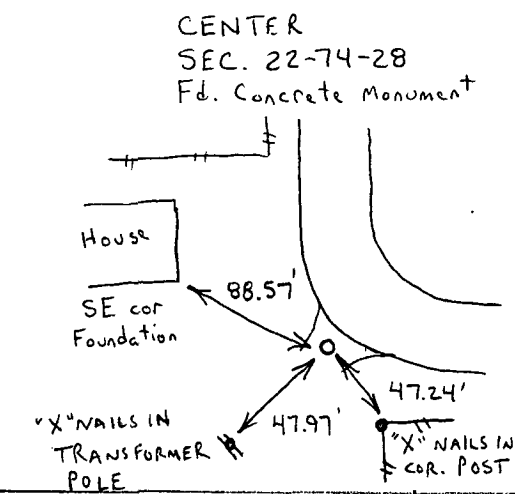
Land Survey Monuments situated in Section 22, Township 74 NORTH, Range 28 WEST, of the Fifth Principal Meridian, MADISON County, Iowa. Previously recorded in \_\_\_\_\_ in County Recorder's Office.

(Show reason for preparing this certificate, the evidence and detailed procedures used in establishing the corner positions and monumentation found or placed.)

Monument Description and Remarks:  
CENTER - Fd. Conc. Monument with 1/2" Iron Pin exposed, 12" deep  
SE. cor. NE 1/4 SW 1/4 - Fd. exposed stone  
WEST 1/4 cor. - Fd. Red Granite Stone exposed  
NE cor. NW 1/4 SE 1/4 - Set CIR #6808  
NORTH 1/4 cor. - Fd. 1/2" Iron Pin 8" deep

**PLAN - VIEW**

(Show a minimum of three reference ties to durable physical objects, relevant monuments and physical conditions that will enable recovery of the corner.)



I hereby certify that the survey work was completed and this land surveying document was prepared by me or under my direct personal supervision and that I am a duly registered land surveyor under the laws of the state of Iowa

Signature: J. M. Hochstetler  
 Name typed or printed: J. M. Hochstetler  
 Date: 9/14/96 Reg. No. 6808  
 My registration renewal date is December 31, 1997



**List Corners to be Indexed**

Corners	Section	Twp	Range
CENTER	22	74 N	28 W
SE cor. NE 1/4 SW 1/4	22	74 N	28 W
WEST 1/4 cor.	22	74 N	28 W
NE cor. NW 1/4 SE 1/4	22	74 N	28 W
NORTH 1/4 cor.	22	74 N	28 W

SEAL