

COMPUTER
RECORDED
COMPARED

FILED NO. **334**

BOOK 1 PAGE 400

96 AUG -2 PM 12:08

REC 5 10
AUF
R.M.F. 5 10

MICHELLE UTSLER
RECORDER
MADISON COUNTY, IOWA

VANCE & HOCHSTETLER, P.C. CONSULTING ENGINEERS, WINTERSSET, IOWA (515)462-3995

CHARLES T. VANCE, 71 JEFFERSON ST., WINTERSSET, IOWA 50273
JAMES M. HOCHSTETLER, 71 JEFFERSON ST., WINTERSSET, IOWA 50273

SLSI 9-94

UNITED STATES PUBLIC LAND SURVEY CORNER CERTIFICATE

OF

Land Survey Monuments situated in Section 26, Township 77 NORTH, Range 26 WEST, of the Fifth Principal Meridian, MADISON County, Iowa. Previously recorded in _____ in County Recorder's Office.

(Show reason for preparing this certificate, the evidence and detailed procedures used in establishing the corner positions and monumentation found or placed.)

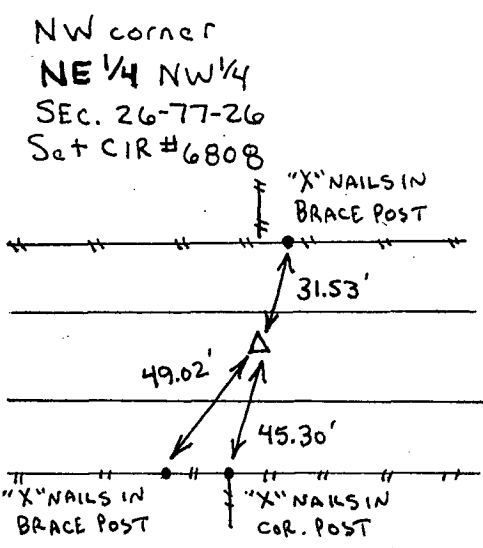
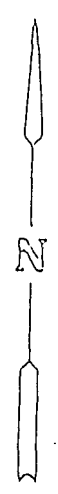
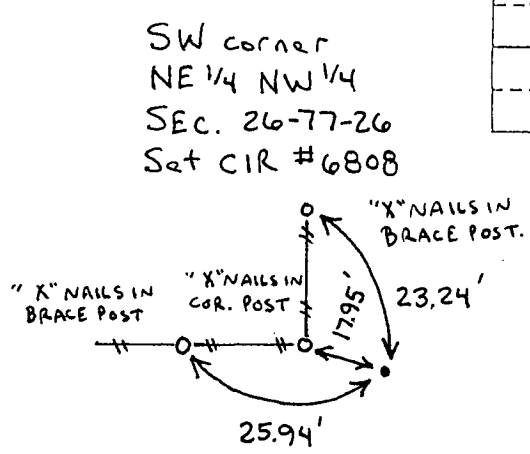
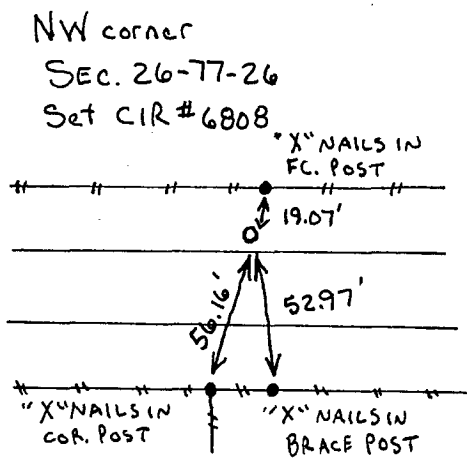
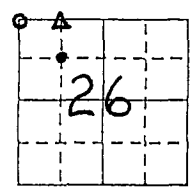
Monument Description and Remarks: NW corner - Set CIR #6808 using existing corners in Sections 26 & 27.

NW cor. NE 1/4 NW 1/4 - Set CIR #6808 @ split of N. line NW 1/4.

SW cor. NE 1/4 NW 1/4 - Set CIR #6808 @ center split (E-W) of NW 1/4 sec. 26

PLAN - VIEW

(Show a minimum of three reference ties to durable physical objects, relevant monuments and physical conditions that will enable recovery of the corner.)



I hereby certify that the survey work was completed and this land surveying document was prepared by me or under my direct personal supervision and that I am a duly registered land surveyor under the laws of the state of Iowa

Signature: J. M. Hochstetler
Name typed or printed: J. M. Hochstetler

Date: 7/17/96 Reg. No. 6808

My registration renewal date is December 31, 1997

SEAL



List Corners to be Indexed

Corners	Section	Twp	Range
NW cor. ○	26	77N	26W
NW cor. NE 1/4 NW 1/4 Δ	26	77N	26W
SW cor. NE 1/4 NW 1/4 ●	26	77N	26W