

COMPUTER
RECORDED
CO. INDEXED

FILED NO. 333

BOOK 1 PAGE 399

96 AUG -2 PM 12:06

MICHELLE UTSLER
RECORDER
MADISON COUNTY, IOWA

VANCE & HOCHSTETLER, P.C. CONSULTING ENGINEERS, WINTERSSET, IOWA (515)462-3995

CHARLES T. VANCE, 71 JEFFERSON ST., WINTERSSET, IOWA 50273

JAMES M. HOCHSTETLER, 71 JEFFERSON ST., WINTERSSET, IOWA 50273

SLSI 9-94

UNITED STATES PUBLIC LAND SURVEY CORNER CERTIFICATE

OF

Land Survey Monuments situated in Section 12, Township 74 NORTH, Range 29 WEST, of the Fifth Principal Meridian, MADISON County, Iowa. Previously recorded in _____ in County Recorder's Office.

(book, page, document number, etc.)

(Show reason for preparing this certificate, the evidence and detailed procedures used in establishing the corner positions and monumentation found or placed.)

Monument Description and Remarks:

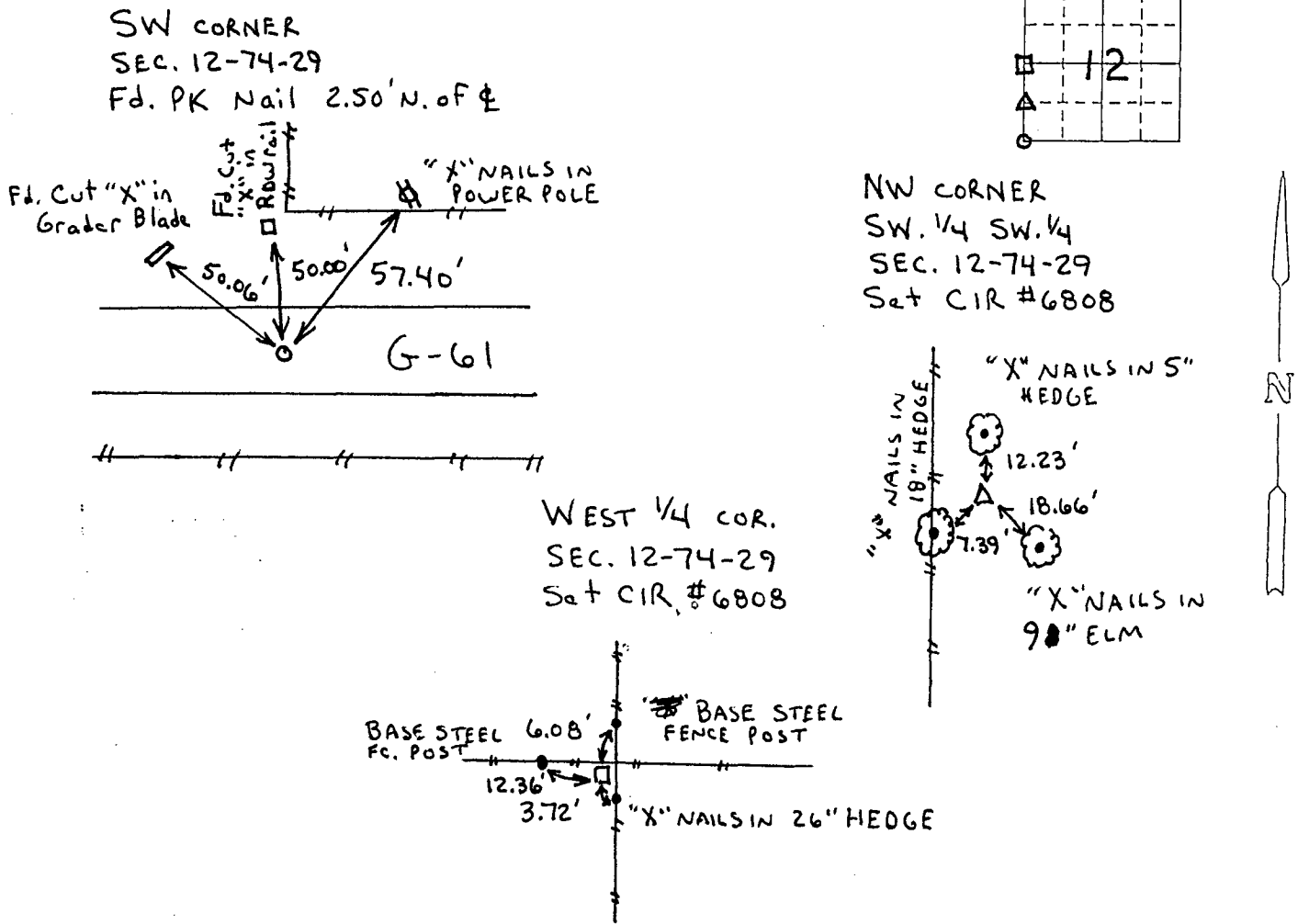
SW cor. - Fd. PK Nail in County Road G-61, 2.50' N. of E

WEST 1/4 cor. - Set CIR #6808 @ 4-way fence corner.

NW cor. SW. 1/4 SW. 1/4 - Set CIR #6808 at split between the two previously mentioned corners.

PLAN - VIEW

(Show a minimum of three reference ties to durable physical objects, relevant monuments and physical conditions that will enable recovery of the corner.)



I hereby certify that the survey work was completed and this land surveying document was prepared by me or under my direct personal supervision and that I am a duly registered land surveyor under the laws of the state of Iowa

Signature: J. M. Hochstetler
Name typed or printed: J. M. Hochstetler

Date: 8/2/96 Reg. No. 6808

My registration renewal date is December 31, 1997

List Corners to be Indexed

Corners	Section	Twp	Range
SW cor.	12	74N	29W
W. 1/4 cor.	12	74N	29W
NW cor. Sw. 1/4 Sw. 1/4	12	74N	29W



SEAL