

COMPUTER RECORDED
RECORDED
CORRECTED

FILED NO. **332**

BOOK 1 PAGE 398

96 AUG -2 PM 12: 03

MICHELLE UTSLER
RECORDER
MADISON COUNTY, IOWA

REC 5 00
AUD
R.M.F. S

VANCE & HOCHSTETLER, P.C. CONSULTING ENGINEERS, WINTERSSET, IOWA (515)462-3995

CHARLES T. VANCE, 71 JEFFERSON ST., WINTERSSET, IOWA 50273

JAMES M. HOCHSTETLER, 71 JEFFERSON ST., WINTERSSET, IOWA 50273

SLSI 9-94

UNITED STATES PUBLIC LAND SURVEY CORNER CERTIFICATE

OR

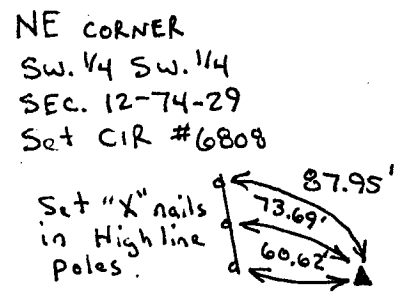
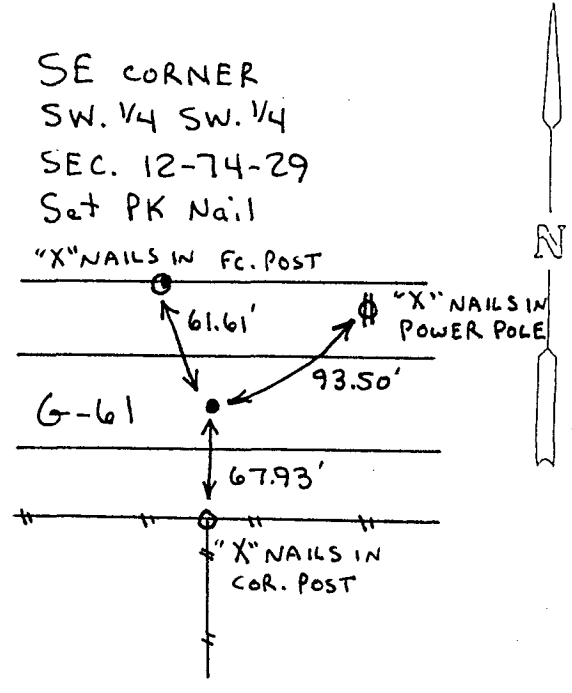
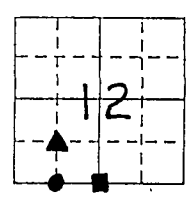
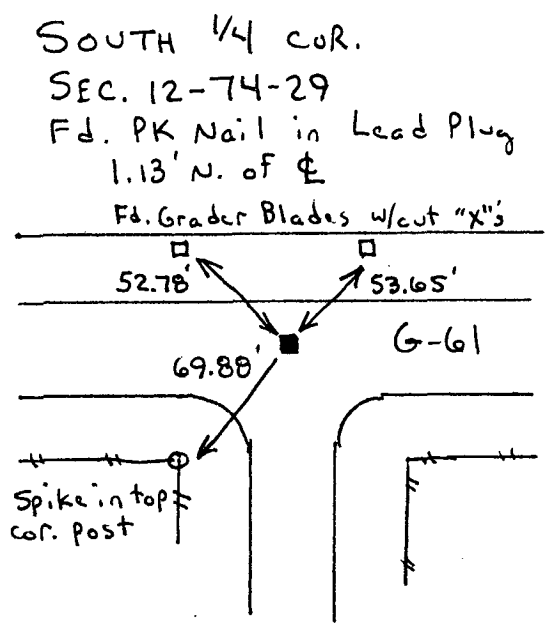
Land Survey Monuments situated in Section 12, Township 74 NORTH, Range 29 WEST, of the Fifth Principal Meridian, MADISON County, Iowa. Previously recorded in _____ in County Recorder's Office.

(book, page, document number, etc.)
(Show reason for preparing this certificate, the evidence and detailed procedures used in establishing the corner positions and monumentation found or placed.)

Monument Description and Remarks:
SOUTH 1/4 cor. - Fd. PK. Nail in Lead Plug N. of E
SE cor. SW. 1/4 SW. 1/4 - Set PK Nail at split of S. line of SW 1/4
NE cor. SW. 1/4 SW. 1/4 - Set CIR # 6808 at center of SW 1/4.

PLAN - VIEW

(Show a minimum of three reference ties to durable physical objects, relevant monuments and physical conditions that will enable recovery of the corner.)



I hereby certify that the survey work was completed and this land surveying document was prepared by me or under my direct personal supervision and that I am a duly registered land surveyor under the laws of the state of Iowa

Signature: J.M. Hochstetler
Name typed or printed: J.M. Hochstetler

Date: 8/2/96 Reg. No. 6808

My registration renewal date is December 31, 1997



List Corners to be Indexed

Corners	Section	Twp	Range
S. 1/4 cor.	12	74 N	29 W
SE cor.	12	74 N	29 W
SW. 1/4 SW. 1/4	12	74 N	29 W
NE cor.	12	74 N	29 W
SW. 1/4 SW. 1/4	12	74 N	29 W

SEAL