

REC \$ 5.00
AUD \$
R.M.F. \$ 1.00

FILED NO. 1077

BOOK 1 PAGE 413

96 OCT 18 PM 4:00

COMPUTER
RECORDED
COMPARED

MICHELLE UTSLER
RECORDER
MADISON COUNTY, IOWA

VANCE & HOCHSTETLER, P.C. CONSULTING ENGINEERS, WINTERSSET, IOWA (515)462-3995

CHARLES T. VANCE, 110 West Green St., Winterset, Iowa 50273
JAMES M. HOCHSTETLER, 110 West Green St., Winterset, Iowa 50273

SLS19-94

UNITED STATES PUBLIC LAND SURVEY CORNER CERTIFICATE

OF

Land Survey Monuments situated in Section 28, Township 76 N, Range 29 W, of the Fifth Principal Meridian, MADISON County, Iowa.
Previously recorded in _____ in County Recorder's Office.

(book, page, document number, etc.)

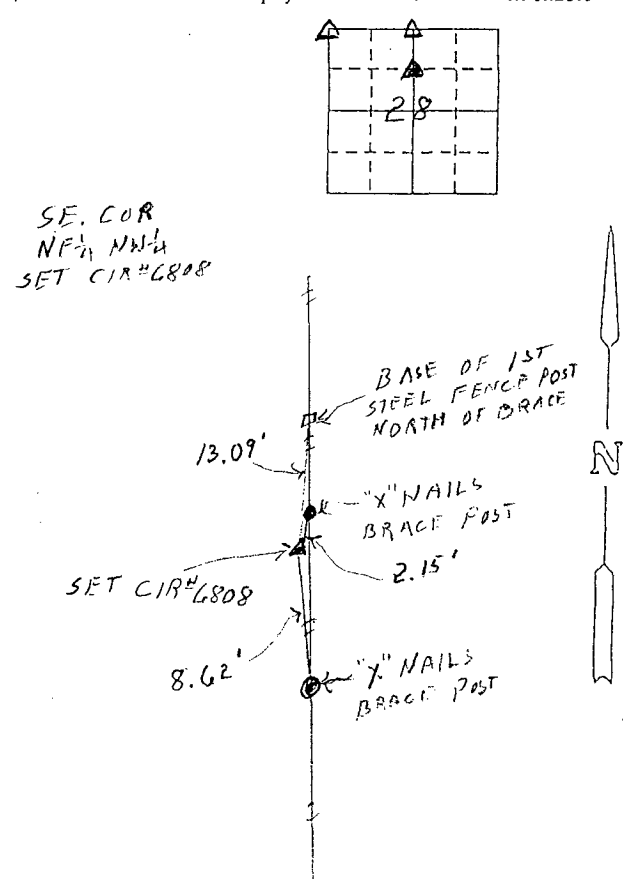
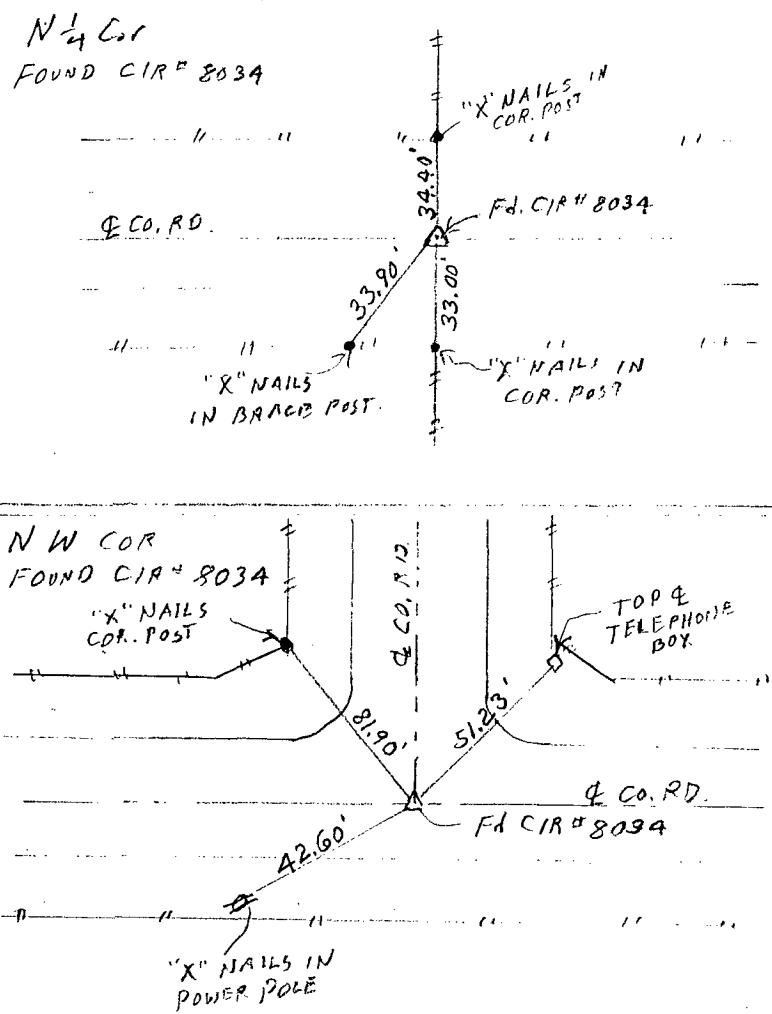
(Show reason for preparing this certificate, the evidence and detailed procedures used in establishing the corner positions and monumentation found or placed.)

Monument Description and Remarks: NORTH QUARTER CORNER & NORTHWEST

CORNER OF SECTION 28-T76N-R29W WERE CIR # 8034 SET BY CLEO MCCALL IN 1982. THE SOUTHEAST CORNER OF THE NORTHEAST QUARTER OF THE NORTHWEST QUARTER IS A CIR # 6808 SET AT MID POINT & ON LINE BETWEEN FOUND N¹/₄ CORNER & A 4 WAY FENCE CORNER AT CENTER OF SECTION.

PLAN - VIEW

(Show a minimum of three reference ties to durable physical objects, relevant monuments and physical conditions that will enable recovery of the corner.)



I hereby certify that the survey work was completed and this land surveying document was prepared by me or under my direct personal supervision and that I am a duly registered land surveyor under the laws of the state of Iowa
Signature: J. M. Hochstetler
Name typed or printed: J. M. HOCHSTETLER
Date: 10/17/96 Reg. No. 6808
My registration renewal date is December 31, 1997

List Corners to be Indexed

Corners	Section	Twp	Range
N ¹ / ₄ Cor.	28	76 N	29 W
NW Cor	28	76 N	29 W
SE COR NE ¹ / ₄ NW ¹ / ₄	28	76 N	29 W



SEAL