

COMPUTER
RECORDED
COMPARED

MICHELLE UTSLER
RECORDER
MADISON COUNTY, IOWA

VANCE & HOCHSTETLER, P.C. CONSULTING ENGINEERS, WINTERSSET, IOWA (515)462-3995

CHARLES T. VANCE, 110 West Green St., Winterset, Iowa 50273
JAMES M. HOCHSTETLER, 110 West Green St., Winterset, Iowa 50273

SLS1 9-94

UNITED STATES PUBLIC LAND SURVEY CORNER CERTIFICATE

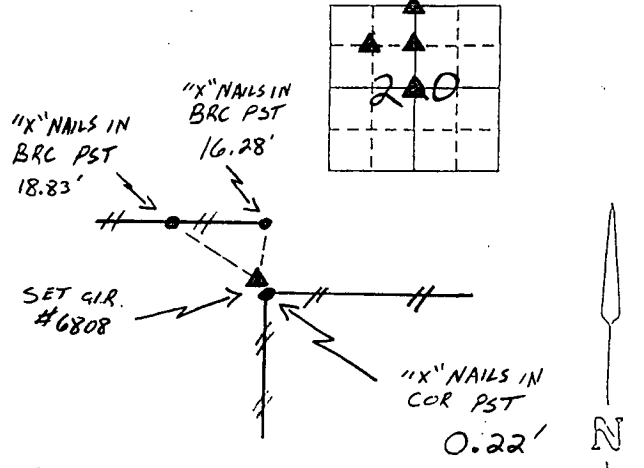
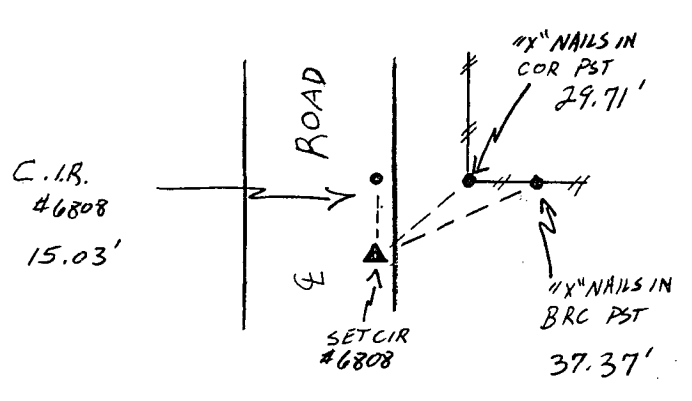
OF
Land Survey Monuments situated in Section 20, Township 76 NORTH, Range 27 WEST, of the Fifth Principal Meridian, MADISON County, Iowa.
Previously recorded in _____ in County Recorder's Office.

(Show reason for preparing this certificate, the evidence and detailed procedures used in establishing the corner positions and monumentation found or placed.)

Monument Description and Remarks: SET A CAPPED IRON ROD AT THE NORTHWEST CORNER, SOUTHEAST QUARTER, NORTHWEST QUARTER. ALSO SET A CAPPED IRON ROD AT THE NORTH QUARTER CORNER. THEN FOUND A BURIED AXEL SIX INCHES DEEP AT THE CENTER OF SECTION. AND FOUND A HALF INCH SQUARE BAR AT THE NORTH EAST CORNER, SOUTHEAST QUARTER, NORTHWEST QUARTER.

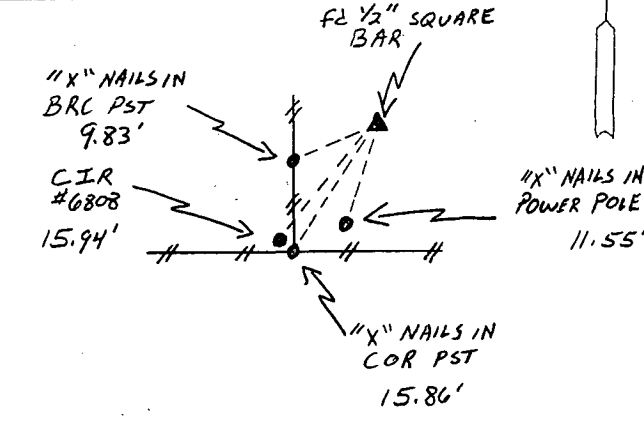
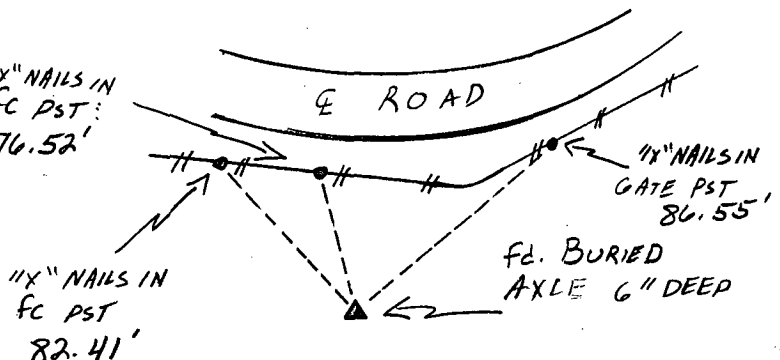
PLAN - VIEW

(Show a minimum of three reference ties to durable physical objects, relevant monuments and physical conditions that will enable recovery of the corner.)



REF. TO NW COR. SE 1/4 NW 1/4 SECTION 20, T76N, R27W

REF. TO NORTH 1/4 COR. SECTION 20, T76N, R27W



REF TO CENTER SECTION 20, T76N, R27W

REF. TO NE COR. SE 1/4, NW 1/4, SECTION 20, T76N, R27W

I hereby certify that the survey work was completed and this land surveying document was prepared by me or under my direct personal supervision and that I am a duly registered land surveyor under the laws of the state of Iowa

Signature: J.M. Hochstetler
Name typed or printed: J.M. Hochstetler

Date: 10/1/96 Reg. No. 6808

My registration renewal date is December 31, 1997

SEAL



List Corners to be Indexed

Table with 4 columns: Corners, Section, Twp, Range. Rows include NW COR. SE 1/4 NW 1/4, NORTH 1/4 COR., CENTER, and NE COR. SE 1/4 NW 1/4.