

COMPUTER   
RECORDED   
COMPALED

FILED NO. 66  
BOOK 1 PAGE 392  
96 JUL -9 AM 11:15

REC \$ 5.00  
AUD \$ \_\_\_\_\_  
R.M.F. \$ 1.00

MICHELLE UTSLER  
RECORDER  
IOWA COUNTY 1515 462-3995

VANCE & HOCHSTETLER, P.C. CONSULTING ENGINEERS, WINTERSSET, IOWA

CHARLES T. VANCE, 71 JEFFERSON ST., WINTERSSET, IOWA 50273

JAMES M. HOCHSTETLER, 71 JEFFERSON ST., WINTERSSET, IOWA 50273

SLS19-94

UNITED STATES PUBLIC LAND SURVEY CORNER CERTIFICATE

OF

Land Survey Monuments situated in Section 11, Township 77 NORTH, Range 26 WEST, of the Fifth Principal Meridian, MADISON County, Iowa. Previously recorded in \_\_\_\_\_ in County Recorder's Office.

(book, page, document number, etc.)

(Show reason for preparing this certificate, the evidence and detailed procedures used in establishing the corner positions and monumentation found or placed.)

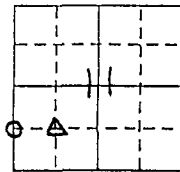
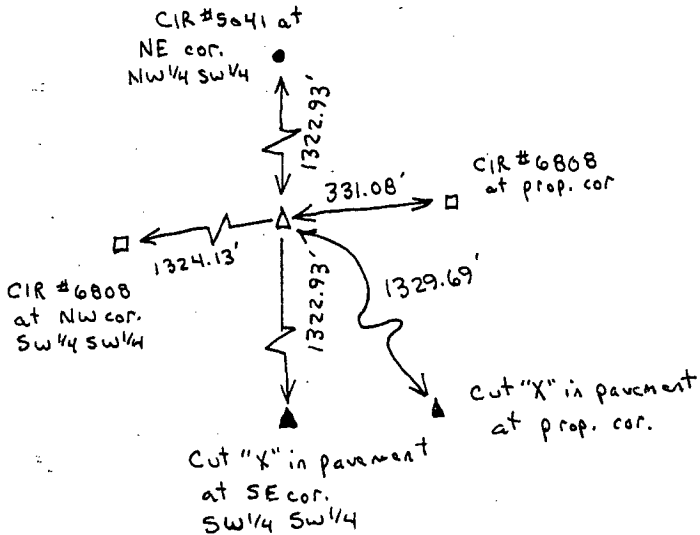
Monument Description and Remarks:

NE corner Sw 1/4 Sw 1/4 - Set CIR #6808 at N-S & E-W intersection of 40 acre lines.  
NW corner Sw 1/4 Sw 1/4 - Set CIR #6808 at split of west line of the Sw 1/4 of section 11

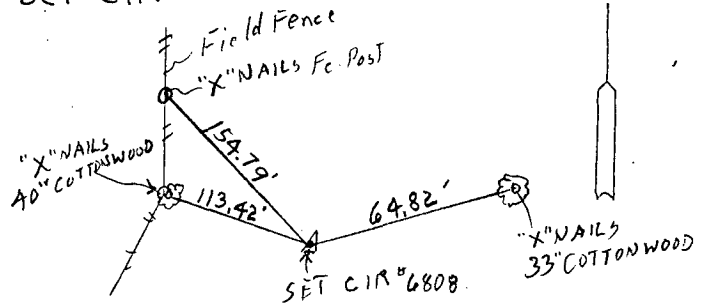
PLAN - VIEW

(Show a minimum of three reference ties to durable physical objects, relevant monuments and physical conditions that will enable recovery of the corner.)

NE corner  
Sw 1/4 Sw 1/4  
SEC. 11-77-26  
Set CIR #6808



NW CORNER  
Sw 1/4 Sw 1/4  
SEC. 11-77-26  
Set CIR #6808



I hereby certify that the survey work was completed and this land surveying document was prepared by me or under my direct personal supervision and that I am a duly registered land surveyor under the laws of the state of Iowa

Signature: J. M. Hochstetler  
Name typed or printed: J. M. Hochstetler

Date: 6/18/96 Reg. No. 6808

My registration renewal date is December 31, 1997

SEAL



List Corners to be Indexed

Corners	Section	Twp	Range
NE corner $\Delta$ Sw 1/4 Sw 1/4	11	77N	26W
<del>SE corner</del>			
NW corner $\circ$ Sw 1/4 Sw 1/4	11	77N	26W