

COMPUTER   
RECORDED   
COMPARED

FILED NO. **3626**

BOOK 1 PAGE 380

95 JUN 24 PM 4: 01

MICHELLE UTSLER  
RECORDER

Prepared By: J. Brian Morrissey, Morrissey Surveying, 1926 Pammel Park Road, Winterset, Ia. 50273 (515) 482-2166

# UNITED STATES PUBLIC LAND SURVEY CORNER CERTIFICATE OF

Land Survey Monuments situated in Section 31, Township 76N, Range 29W, of the Fifth Principal Meridian, Madison County, Iowa.  
Previously recorded in N.A. in County Recorders Office.

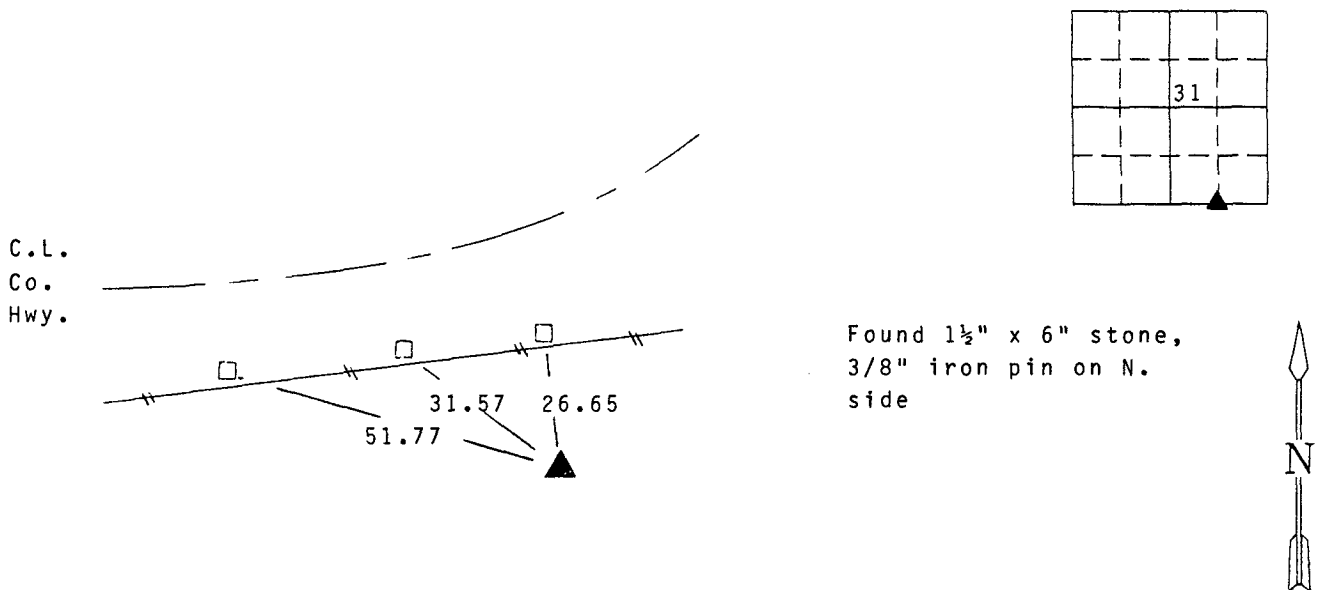
(book, page, document number, etc.)

(Show reason for preparing this certificate, the evidence and detailed procedures used in establishing the corner positions and monumentation found or placed.)

Monument Description and Remarks: Found 1 1/2" x 6" stone with 3/8" iron pin on north side, previously logged by County Engineer's Office. Accepted position.

## PLAN VIEW

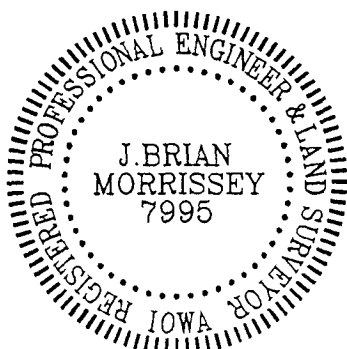
(Show a minimum of three reference ties to durable physical objects, relevant monuments and physical conditions that will enable recovery of the corner.)



SE. Cor., SW. 1/4, SE. 1/4, Sec. 31

□ - "x" in top of grader blade

Note: all ties to "x" nails unless noted



I hereby certify that the survey work was completed and this certificate was prepared by me or my direct personal supervision and that I am a duly registered land surveyor under the laws of the state of Iowa. My registration renewal date is 12/31/97.

Signature: J. Brian Morrissey

Name typed or printed: J. Brian Morrissey

Date: 6/24/96 Reg.No. 7995

135-96