

COMPUTER
RECORDED
COMPARED

FILED NO. 211
BOOK 1 PAGE 394

REC \$ 5.00 96 JUL 23 AM 8:28
AUD.
R.M.F. \$ 1.00 MICHELLE UTSLER
REGORDER
MADISON COUNTY, IOWA

SLSI 9-90

UNITED STATES PUBLIC LAND SURVEY CORNER CERTIFICATE

OF

Land Survey Monuments situated in Section 30, Township 77 North, Range 27 West, of the Fifth Principal Meridian, Madison County, Iowa.
Previously recorded in N/A in County Recorder's Office.

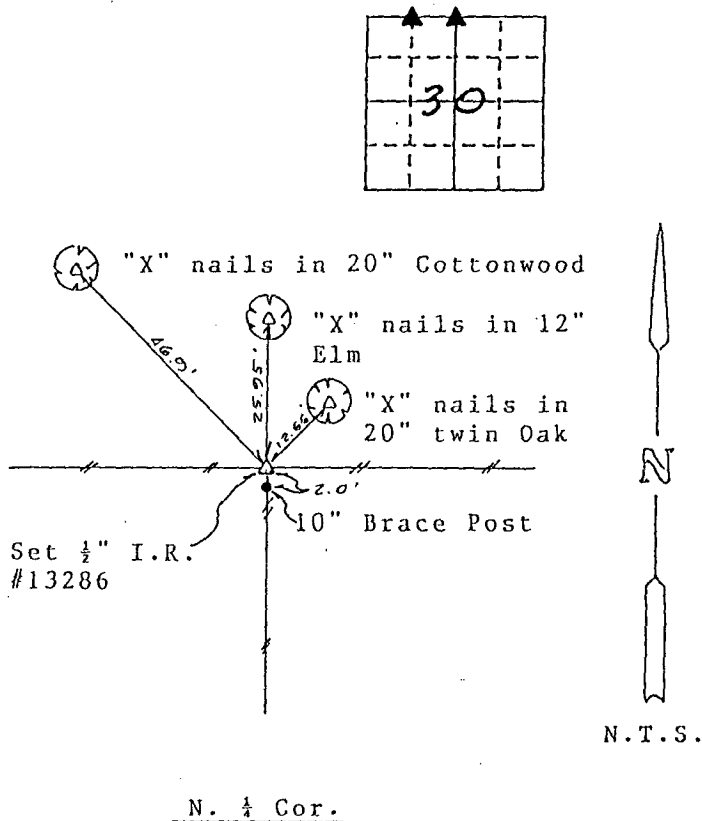
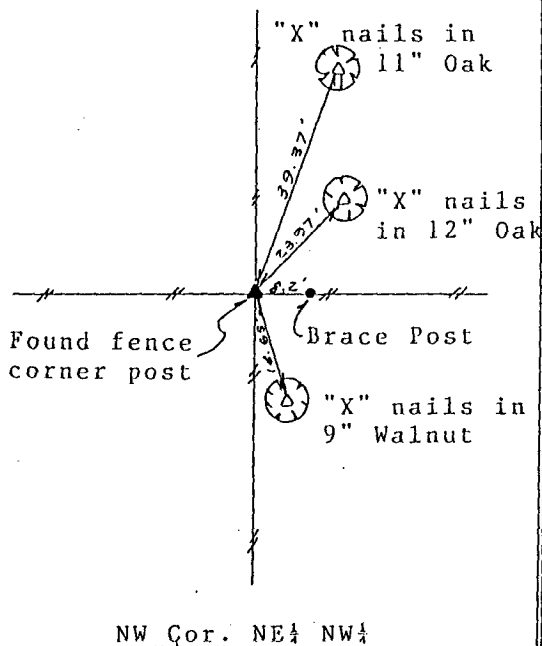
(book, page, document number, etc.)

(Show reason for preparing this certificate, the evidence and detailed procedures used in establishing the corner positions and monumentation found or placed.)

Monument Description and Remarks: North 1/4 Corner of Section 30-77-27 - Set
1/2" Iron Rod w/13286 Cap at intersection of 3-way fence
NW Cor. NE 1/4 NW 1/4 Section 30-77-27 - Found
Found 13" Hickory Fence Corner Post at intersection of 4-way Fence
The section corners were used to conduct boundary surveys.

PLAN - VIEW

(Show a minimum of three reference ties to durable physical objects, relevant monuments and physical conditions that will enable recovery of the corner.)



I hereby certify that the survey work was completed and this certificate was prepared by me or under my direct personal supervision and that I am a duly registered land surveyor under the laws of the state of Iowa.

Signature: Gregory L. Ross
Name typed or printed: Gregory L. Ross
Date: 6/14/96 Reg. No. 13286



SEAL

Corners	Section	Twp	Range
N. 1/4 Cor.	30	77	27
NW Cor.			
NE 1/4 NW 1/4	30	77	27

Prepared by:
LandTech Services, Inc.
8560 Alice Avenue - Suite A
Des Moines, IA 50325
Phone (515) 270-9537