

REC \$ 5.00

AUD       

R.M.F. \$ 1.00

FILED NO: **3396**

BOOK 1 PAGE 374

96 JUN -4 PM 2:46

COMPUTER

RECORDED

COMPARED

MICHELLE UTSLER  
RECORDER  
MADISON COUNTY, IOWA

Prepared By: J. Brian Morrissey, Morrissey Surveying, 1926 Pammel Park Road, Winterset, Ia. 50273, Tele. (515) 462-2166

# UNITED STATES PUBLIC LAND SURVEY CORNER CERTIFICATE OF

Land Survey Monuments situated in Section 34, Township 76N, Range 27W, of the Fifth Principal Meridian, Madison County, Iowa.  
Previously recorded in N.A. in County Recorders Office.

(book, page, document number, etc.)

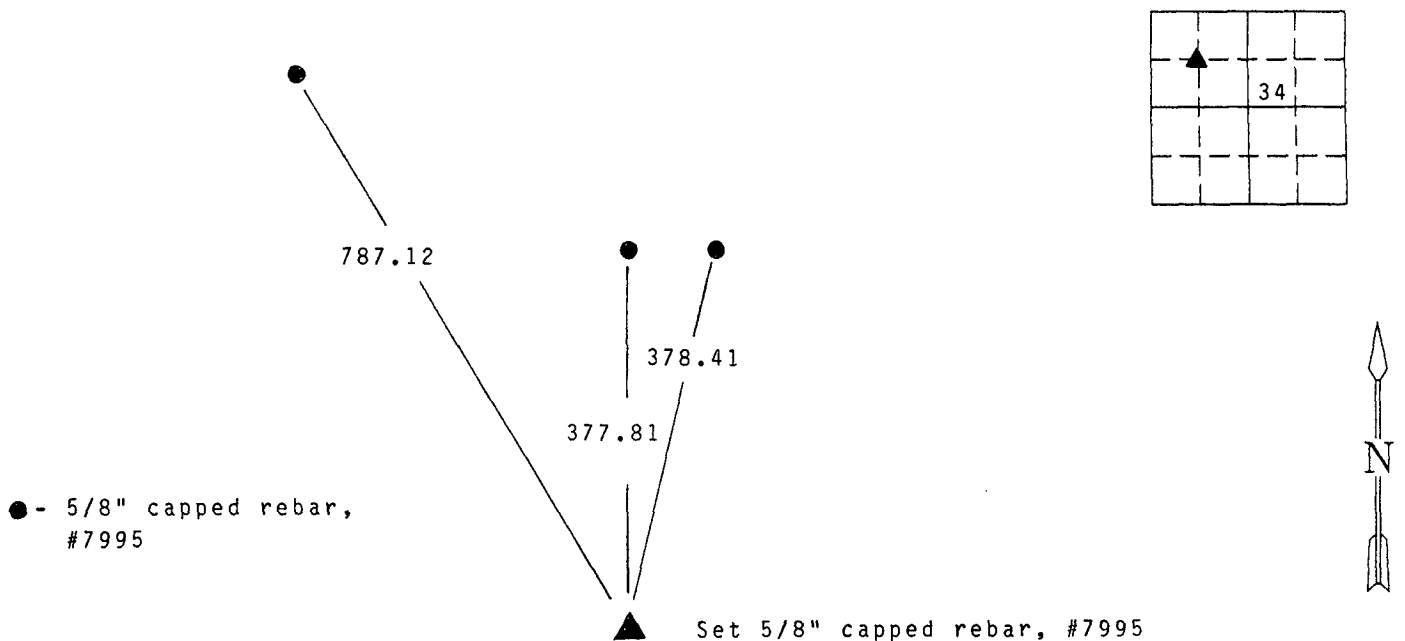
(Show reason for preparing this certificate, the evidence and detailed procedures used in establishing the corner positions and monumentation found or placed.)

Monument Description and Remarks: Set 5/8" capped rebar, #7995, at calculated position using found Section corners in NW 1/4.

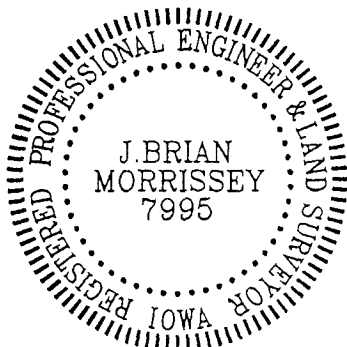
Note: There are no physical objects within a reasonable distance, due to quarry operations, to tie this Section Corner to, see Plat of Survey recorded Farm Plat Bk. 2, PP. 688 and 689.

## PLAN VIEW

(Show a minimum of three reference ties to durable physical objects, relevant monuments and physical conditions that will enable recovery of the corner.)



Note: all ties to "x" nails unless noted



I hereby certify that the survey work was completed and this certificate was prepared by me or my direct personal supervision and that I am a duly registered land surveyor under the laws of the state of Iowa. My registration renewal date is 12/31/97.

Signature: J. Brian Morrissey  
Name typed or printed: J. Brian Morrissey

Date: 6/3/96 Reg.No. 7995

121-96