

REC \$ 500
AUD \$ _____
R.M.F. \$ 100

90-885
FILED NO. 3528
BOOK 1 PAGE 375
96 JUN 13 PM 3:32

COMPUTER
RECORDED
COMPARED

MICHELLE UTSLER
RECORDER
MADISON COUNTY, IOWA

VANCE & HOCHSTETLER, P.C. CONSULTING ENGINEERS, WINTERSSET, IOWA (515)462-3995

CHARLES T. VANCE, 71 JEFFERSON ST., WINTERSSET, IOWA 50273
JAMES M. HOCHSTETLER, 71 JEFFERSON ST., WINTERSSET, IOWA 50273

SLS19-94

UNITED STATES PUBLIC LAND SURVEY CORNER CERTIFICATE

OR

Land Survey Monuments situated in Section 16, Township 75 NORTH, Range 26 WEST, of the Fifth Principal Meridian, MADISON County, Iowa. Previously recorded in _____ in County Recorder's Office.

(book, page, document number, etc.)
(Show reason for preparing this certificate, the evidence and detailed procedures used in establishing the corner positions and monumentation found or placed.)

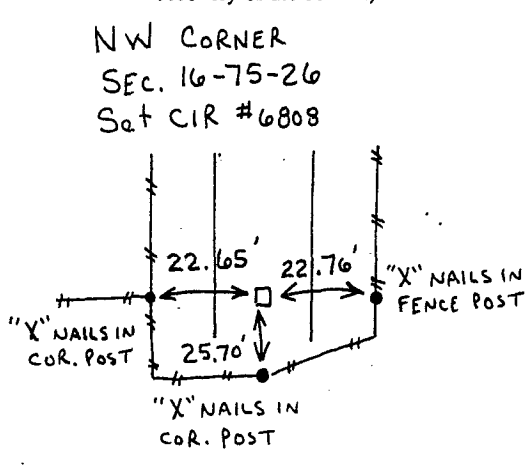
Monument Description and Remarks: NE corner SE 1/4 NW 1/4 - Set CIR #6808 at fence split in county road.

NW corner - Set CIR #6808 from R.O.W. fence split

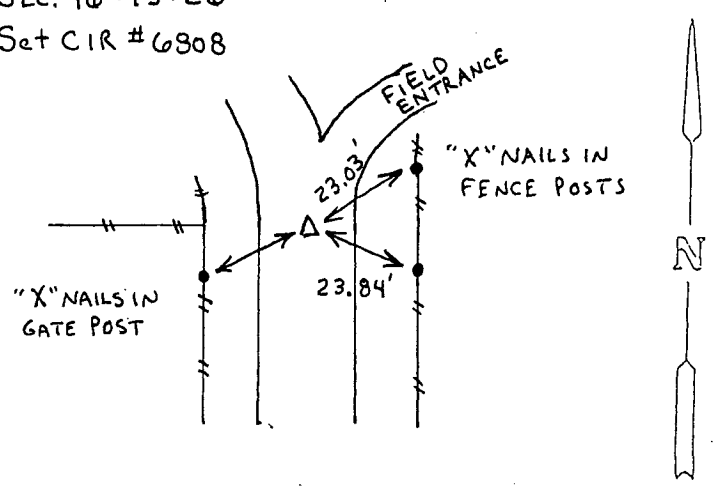
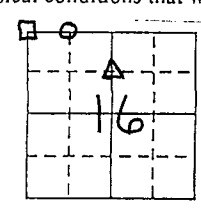
NW corner NE 1/4 NW 1/4 - Set CIR #6808 in timber.

PLAN - VIEW

(Show a minimum of three reference ties to durable physical objects, relevant monuments and physical conditions that will enable recovery of the corner.)

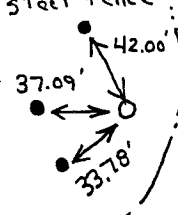


NE CORNER
SE 1/4 NW 1/4
SEC. 16-75-26
Set CIR #6808



NW CORNER
NE 1/4 NW 1/4
SEC. 16-75-26
Set CIR #6808

All ties are to bases of steel fence posts.



I hereby certify that the survey work was completed and this land surveying document was prepared by me or under my direct personal supervision and that I am a duly registered land surveyor under the laws of the state of Iowa.

Signature: J. M. Hochstetler
Name typed or printed: J. M. Hochstetler

Date: 6/7/96 Reg. No. 6808

My registration renewal date is December 31, 1997



List Corners to be Indexed

Corners	Section	Twp	Range
□ NW cor	16	75N	26W
○ NW cor. NE 1/4 NW 1/4	16	75N	26W
△ NE cor. SE 1/4 NW 1/4	16	75N	26W

SEAL