

COMPLETED ✓
INDEXED ✓
CORNERED ✓

FILED NO. 2752
BOOK 1 PAGE 356
96 APR 10 AM 10:24
MICHELLE UTSLER
RECORDER
MADISON COUNTY, IOWA

REC 5
ADD 2
R.M.F. \$ 1

SLSI 9-90

UNITED STATES PUBLIC LAND SURVEY CORNER CERTIFICATE

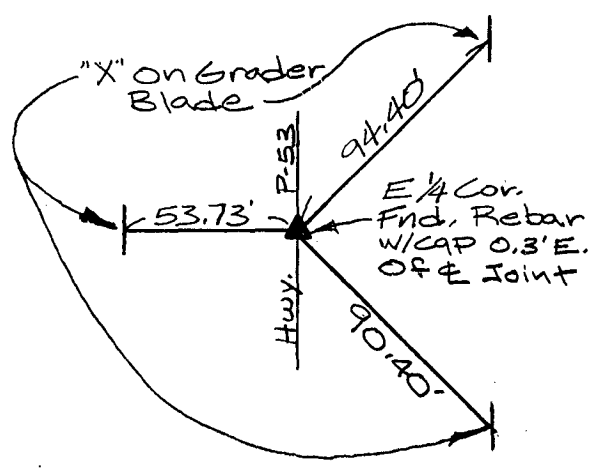
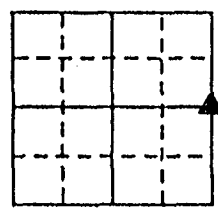
OF

Land Survey Monuments situated in Section 21, Township 77N, Range 29W, of the Fifth Principal Meridian, Madison County, Iowa. Previously recorded in _____ in County Recorder's Office.
(book, page, document number, etc.)

(Show reason for preparing this certificate, the evidence and detailed procedures used in establishing the corner positions and monumentation found or placed.)
Monument Description and Remarks: E. 1/4 Cor: Fnd. Rebar W/cap

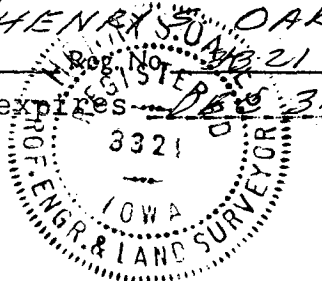
PLAN - VIEW

(Show a minimum of three reference ties to durable physical objects, relevant monuments and physical conditions that will enable recovery of the corner.)



I hereby certify that the survey work was completed and this certificate was prepared by me or under my direct personal supervision and that I am a duly registered land surveyor under the laws of the state of Iowa.

Signature: Henry S. Oakes
Name typed or printed: HENRY S. OAKES
Date: 4-10-96
My Registration expires DEC 31, 1997



Corners	List Corners to be Indexed		
	Section	Twp	Range
E 1/4 Cor.	21	77N	29W

SEAL