

COMPUTER
RECORDED
COMPARED

FILED NO. 2986
BOOK 1 PAGE 361

REC \$ S.O.
AUD \$ _____
R.M.F. \$ L.O.

96 MAY -1 PM 2:53

MICHELLE UTSLER
RECORDER
MADISON COUNTY, IOWA

Prepared By: J. Brian Morrissey, Morrissey Surveying, 1926 Pammel Park Road, Winterset, Ia. 50273, Tele. (515) 462-2166

UNITED STATES PUBLIC LAND SURVEY CORNER CERTIFICATE OF

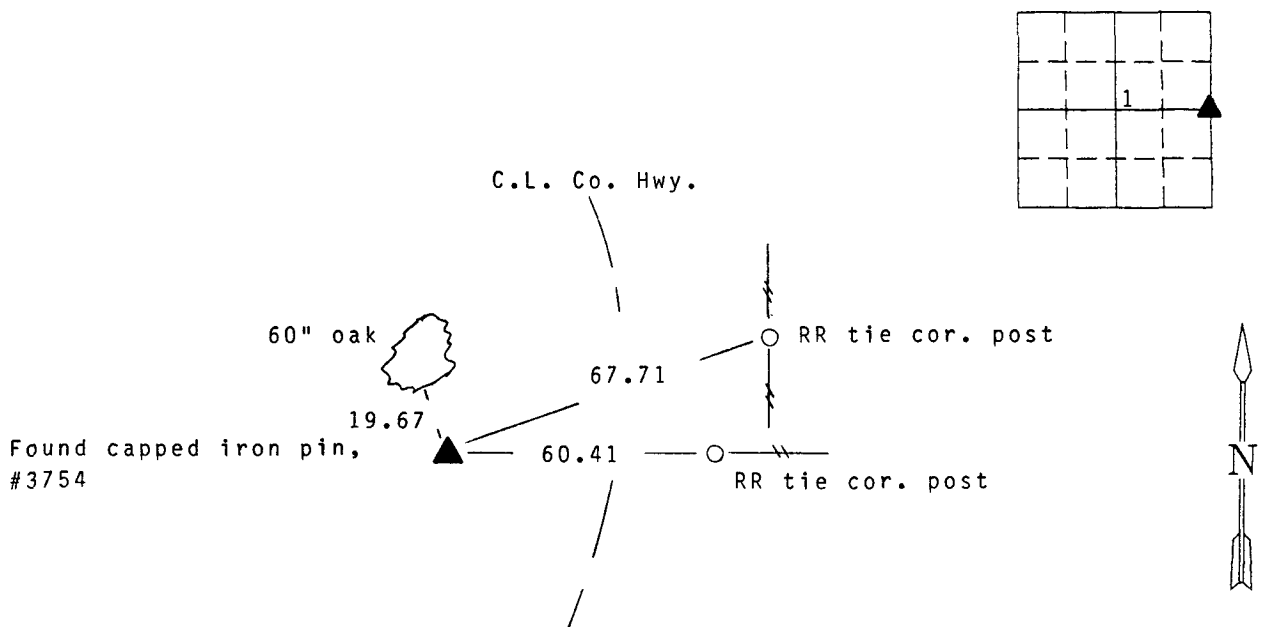
Land Survey Monuments situated in Section 1, Township 75 N, Range 27 W, of the Fifth Principal Meridian, Madison County, Iowa. Previously recorded in N.A. in County Recorders Office.
(book, page, document number, etc.)

(Show reason for preparing this certificate, the evidence and detailed procedures used in establishing the corner positions and monumentation found or placed.)

Monument Description and Remarks: Found capped iron pin, #3754. Ties checked very close to 1955 ties in County Engineer's Office. Accepted position.

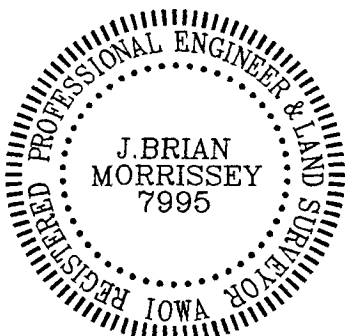
PLAN VIEW

(Show a minimum of three reference ties to durable physical objects, relevant monuments and physical conditions that will enable recovery of the corner.)



NE. Cor., SE. 1/4, Sec. 1

Note: all ties to "x" nails unless noted



I hereby certify that the survey work was completed and this certificate was prepared by me or my direct personal supervision and that I am a duly registered land surveyor under the laws of the state of Iowa. My registration renewal date is 12/31/97.

Signature: J. Brian Morrissey

Name typed or printed: J. Brian Morrissey

Date: 5/1/96 Reg. No. 7995

131-96