

COMPUTER
 RECORDED
 COMPARED
 REC \$
 AUD \$
 Q.M.F. \$

FILED NO. **2950**
 BOOK 1 PAGE 360
 96 APR 29 PM 3:19
 MICHELLE UTSLER
 RECORDER
 MADISON COUNTY, IOWA

Prepared By: J. Brian Morrissey, Madison Co. Engineer, P.O. Box 152 Winterset, Ia. 50273, Telephone (515) 462-1136

UNITED STATES PUBLIC LAND SURVEY CORNER CERTIFICATE OF

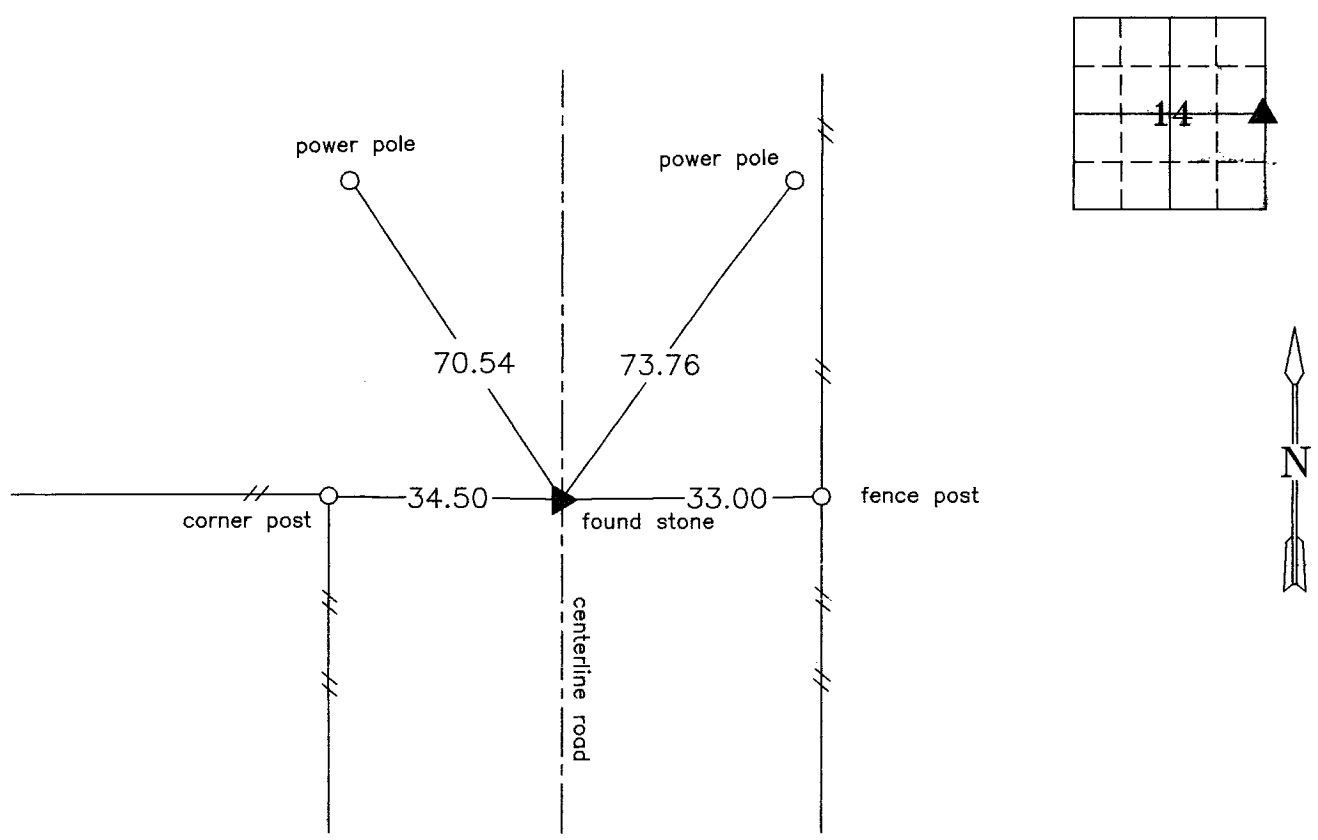
Land Survey Monuments situated in Section 14, Township 76N, Range 26W, of the Fifth Principal Meridian, Madison County, Iowa.
 Previously recorded in N.A. in County Recorders Office.
 (book, page, document number, etc.)

(Show reason for preparing this certificate, the evidence and detailed procedures used in establishing the corner positions and monumentation found or placed.)

Monument Description and Remarks: Found stone 2' deep, set 5/8" capped re-bar RLS #7995, 6" deep over stone.

PLAN VIEW

(Show a minimum of three reference ties to durable physical objects, relevant monuments and physical conditions that will enable recovery of the corner.)



N.E. cor., S.E. 1/4 Sec. 14, T-76N, R-26W

note: all ties "X" nail



I hereby certify that the survey work was completed and this certificate was prepared by me or my direct personal supervision and that I am a duly registered land surveyor under the laws of the state of Iowa. My registration renewal date is 12/31/97.

Signature: J. Brian Morrissey
 Name typed or printed: J. Brian Morrissey

Date: April 26, 1996 Reg.No. 7995