



COMPUTED ✓
 RECORDED ✓
 INDEXED ✓

FILED NO. **2753**

BOOK 1 PAGE 357

96 APR 10 AM 10:25

REC 5/10
 ASD 1/10
 R.M.F. \$ 1/10

MICHELLE UTSLER
 RECORDER
 MADISON COUNTY, IOWA
 SLSI 9-90

UNITED STATES PUBLIC LAND SURVEY CORNER CERTIFICATE

OF

Land Survey Monuments situated in Section 28, Township 77N, Range 29W, of the Fifth Principal Meridian, Madison County, Iowa. Previously recorded in _____ in County Recorder's Office.

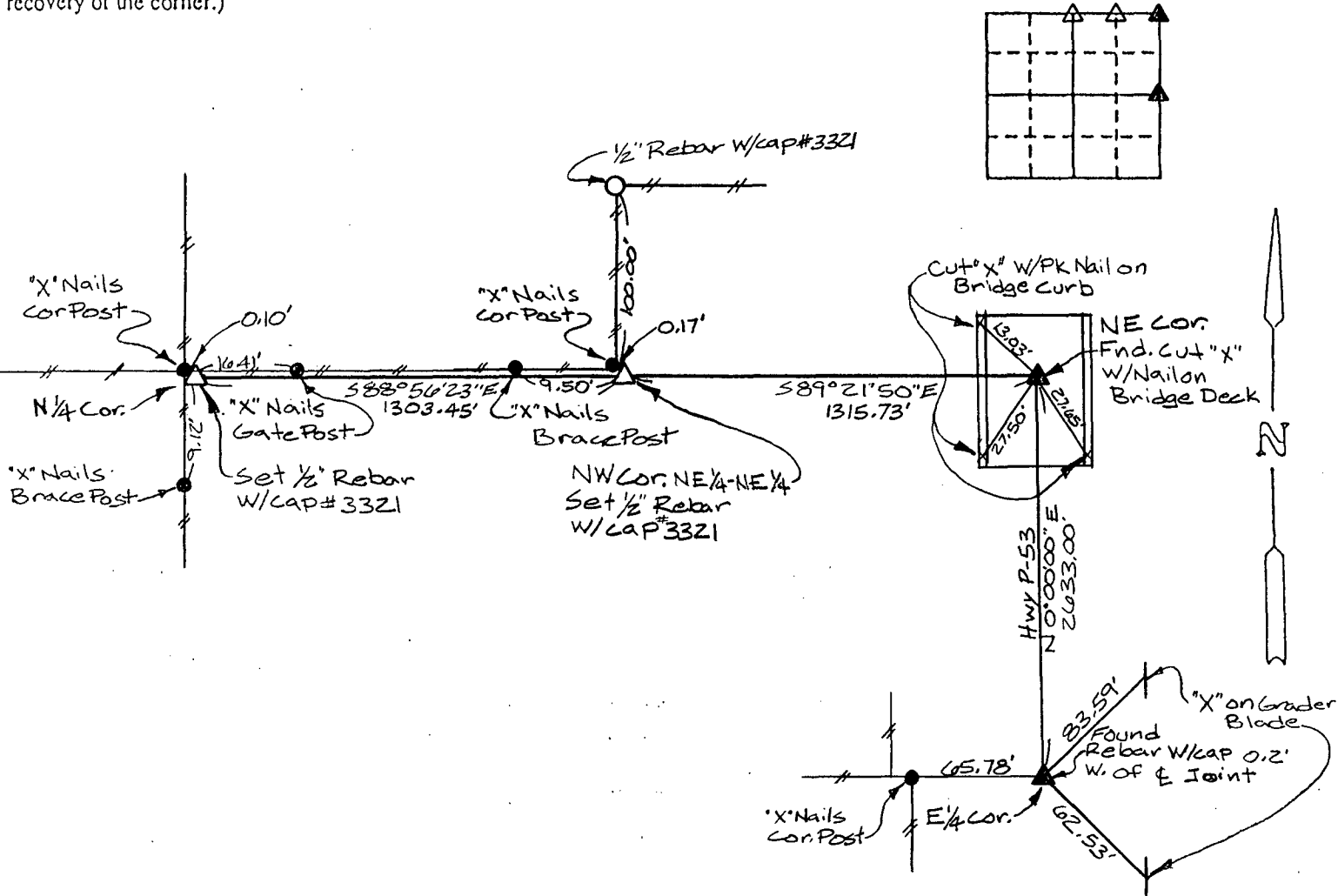
(book, page, document number, etc.)

(Show reason for preparing this certificate, the evidence and detailed procedures used in establishing the corner positions and monumentation found or placed.)

Monument Description and Remarks: E 1/4 Cor.: Found Rebar w/cap with County Ties;
NE Cor.: Fnd. Cut "x" w/Nail on Bridge Deck with County Ties;
NW Cor, NE 1/4-NE 1/4: Set 1/2" Rebar w/cap # 3321 @ Fence Cor. N & W;
N 1/4 Cor.: Set 1/2" Rebar w/cap # 3321 @ Fence Cor. N, S, E & W

PLAN - VIEW

(Show a minimum of three reference ties to durable physical objects, relevant monuments and physical conditions that will enable recovery of the corner.)



I hereby certify that the survey work was completed and this certificate was prepared by me or under my direct personal supervision and that I am a duly registered land surveyor under the laws of the state of Iowa.

Signature: Henry S. Oakes
 Name typed or printed: HENRY S. OAKES

Date: 4-9-96

My Registration Expires DEC 31, 1997

Professional Engineer & Land Surveyor
 No. 3321
 State of Iowa

List Corners to be Indexed			
Corners	Section	Twp	Range
E 1/4 Cor	28	77N	29W
NE Cor	28	77N	29W
NW Cor	28	77N	29W
NE-NE	28	77N	29W
N 1/4 Cor	28	77N	29W

SEAL