

UNITED STATES PUBLIC LAND SURVEY CORNER CERTIFICATE

OF

Land Survey Monuments situated in Section 26, Township 75 N, Range 27 W, of the Fifth Principal Meridian, Madison County, Iowa. Previously recorded in _____ in County Recorder's Office.

(book, page, document number, etc.)

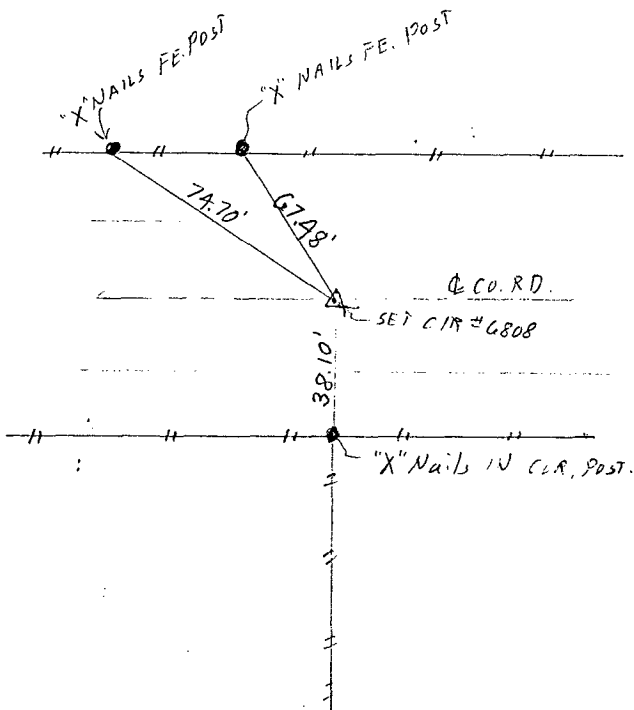
(Show reason for preparing this certificate, the evidence and detailed procedures used in establishing the corner positions and monumentation found or placed.)

Monument Description and Remarks: _____

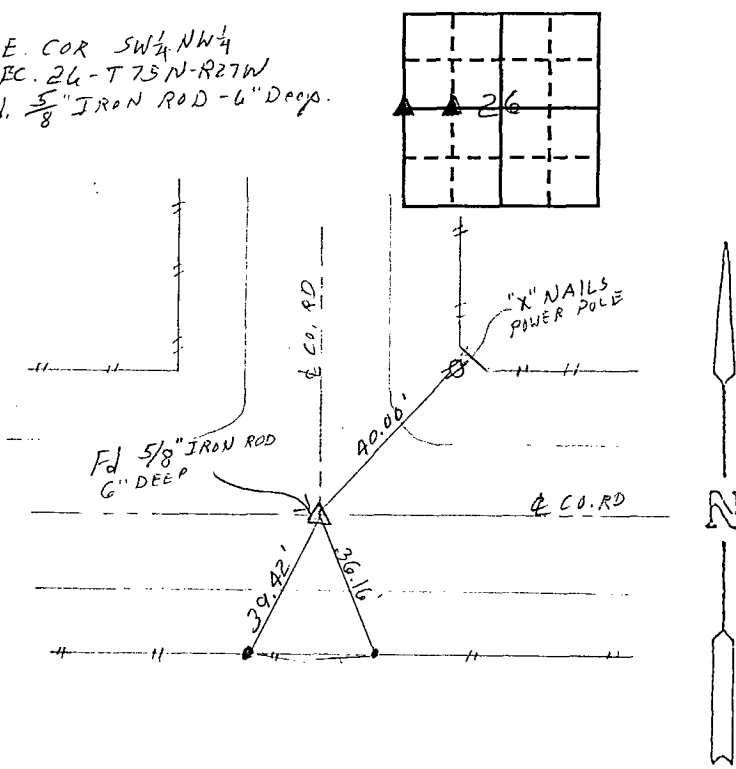
PLAN - VIEW

(Show a minimum of three reference ties to durable physical objects, relevant monuments and physical conditions that will enable recovery of the corner.)

*W 1/4 Cor. SEC. 26-T75N-R27W
SET CIR. # 6808*



*SE. COR SW 1/4 NW 1/4
SEC. 26-T75N-R27W
Fd. 5/8" IRON ROD - 6" DEEP.*



I hereby certify that the survey work was completed and this land surveying document was prepared by me or under my direct personal supervision and that I am a duly registered land surveyor under the laws of the state of Iowa

Signature: J. M. Hochstetler
Name typed or printed: J. M. Hochstetler

Date: 6/24/95 Reg. No. 6808

My registration renewal date is December 31, 1995

SEAL



Corners	Section	Twp	Range
W 1/4 Cor	26	T75N	R27W
SE COR SW 1/4 NW 1/4	26	T75N	R27W

REC \$ 5.00
AUD \$ _____
R.M.F. \$ 1.00
COMPUTER
RECORDED

FILED NO: **101**
BOOK 1 PAGE 294.
95 JUL 12 AM 11:00
MICHELLE UTSELL
RECORDER
MADISON COUNTY, IOWA